

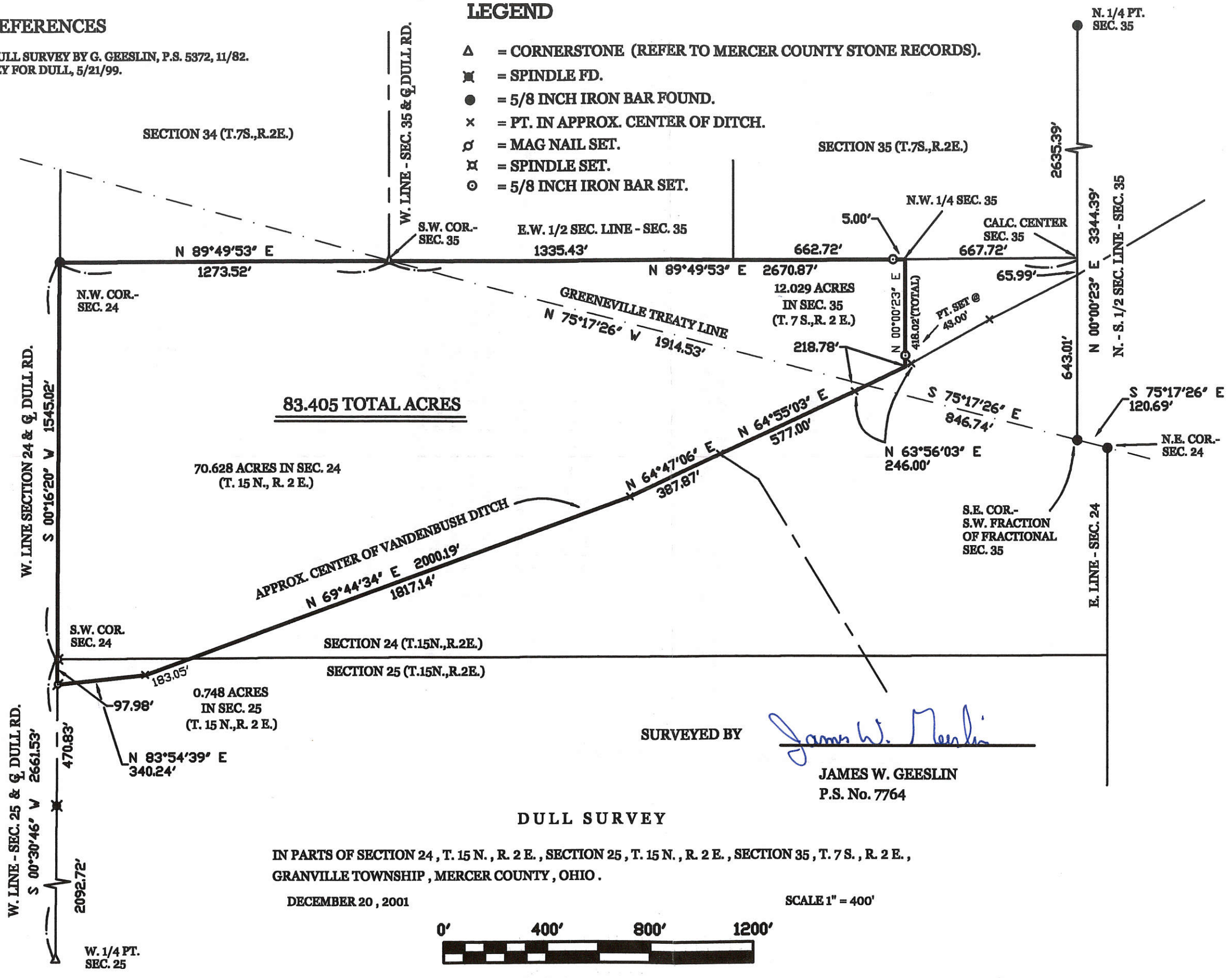
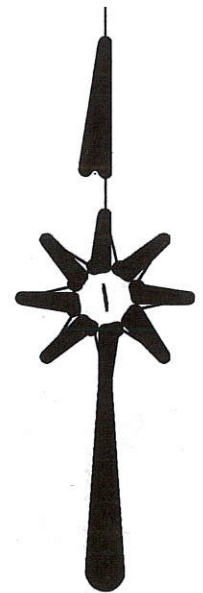
14-F 14-J  
14-24-300-004

**SURVEY REFERENCES**

- 1) BROERING-DULL SURVEY BY G. GEESLIN, P.S. 5372, 11/82.
- 2) PRIOR SURVEY FOR DULL, 5/21/99.

**LEGEND**

- △ = CORNERSTONE (REFER TO MERCER COUNTY STONE RECORDS).
- ✕ = SPINDLE FD.
- = 5/8 INCH IRON BAR FOUND.
- × = PT. IN APPROX. CENTER OF DITCH.
- ⊙ = MAG NAIL SET.
- ⊗ = SPINDLE SET.
- ⊙ = 5/8 INCH IRON BAR SET.



SURVEYED BY

*James W. Geeslin*

JAMES W. GEESLIN  
P.S. No. 7764



PERMANENT PARCEL No. \_\_\_\_\_

Part of: \_\_\_\_\_ Sec. \_\_\_\_\_ T. \_\_\_\_\_ R. \_\_\_\_\_ Township \_\_\_\_\_

Grantor: \_\_\_\_\_ Area Retained: \_\_\_\_\_ Acres

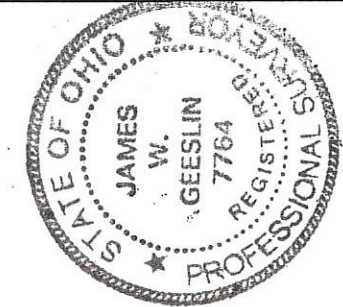
Grantee: \_\_\_\_\_ Area Transferred: \_\_\_\_\_ Acres

Deed References: \_\_\_\_\_

APPROVALS AGENCY: \_\_\_\_\_ DATE: \_\_\_\_\_

Board of Health \_\_\_\_\_ County Sanitary Engineer \_\_\_\_\_

County Engineer \_\_\_\_\_



**GEESLIN**  
**LAND SURVEYING**

P.O. BOX 422  
CELINA, OHIO

PHONE (419) 586-6155  
FAX (419) 268-0554



