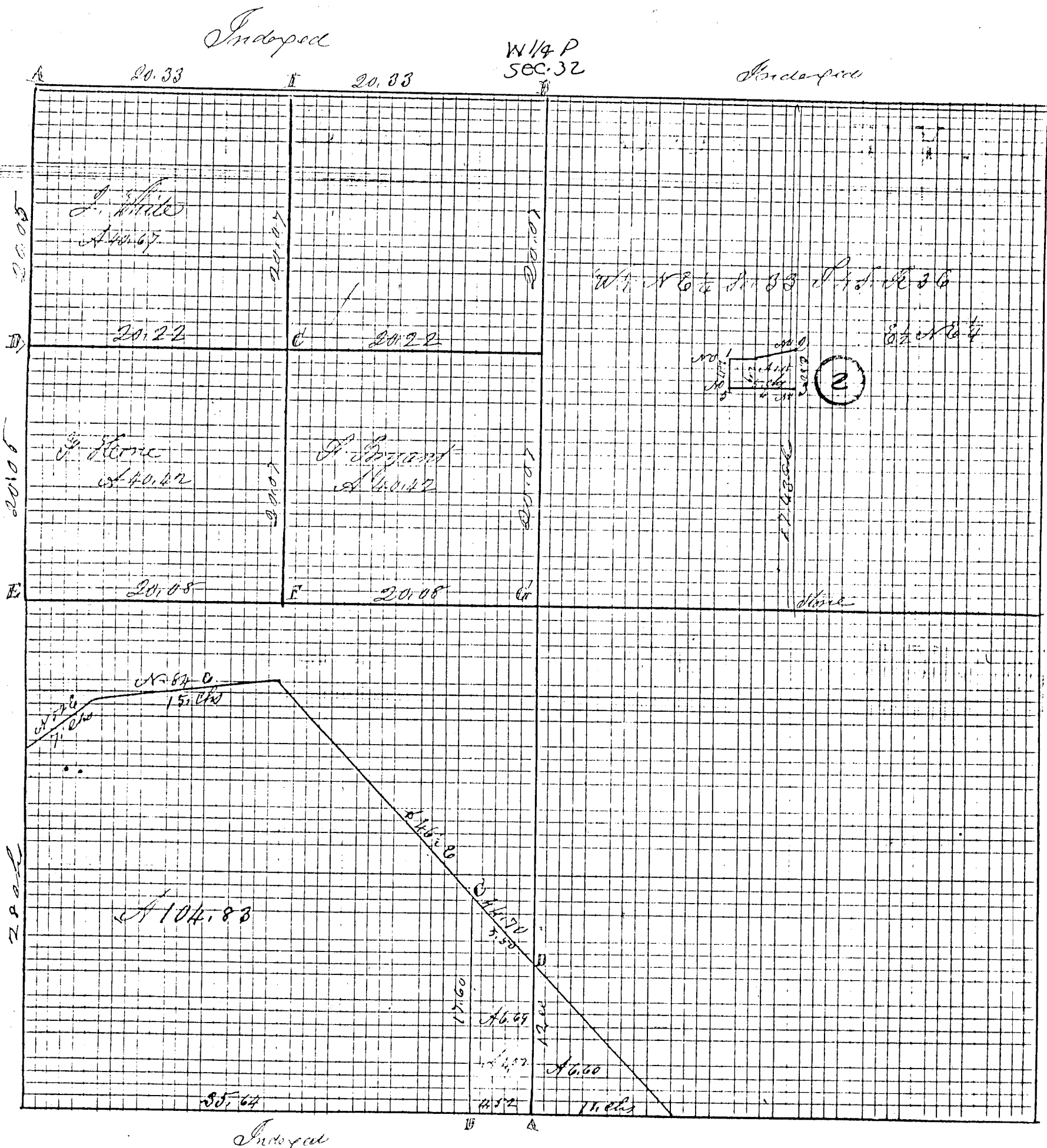


MERCER COUNTY

252

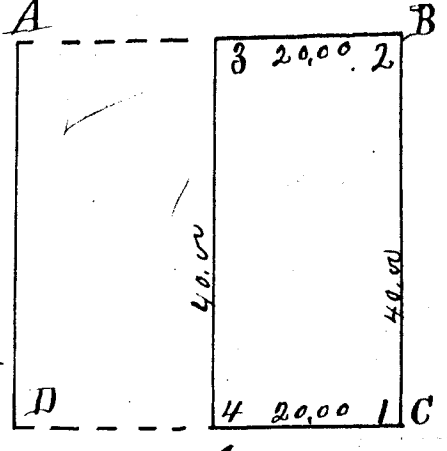
3100



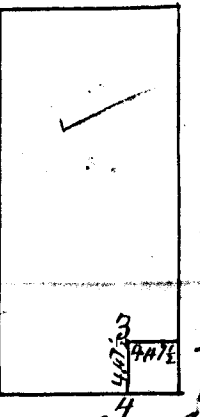
Notes of Survey made by me in the N W 1/4 of Sec 31 Sec. 32 T 55 R 3 E on the 1st day of March 1890 at the Instance of A. B. Garrison the top of Flat is 1000 center of Sec Stone Burr Oak 14 N 34 E 131 1/2 Burr Oak stump 36 N 61 W 115 links same Stone 18.8.0 ... on the North side of Road 2 feet North of Line  
 The above is correct to the best of my knowledge and belief March 17 1890 A. B. Garrison  
 Signed from notes Book 28 Page 20 and 21, 1889

Linzee Surveyor of Mercer County Ohio

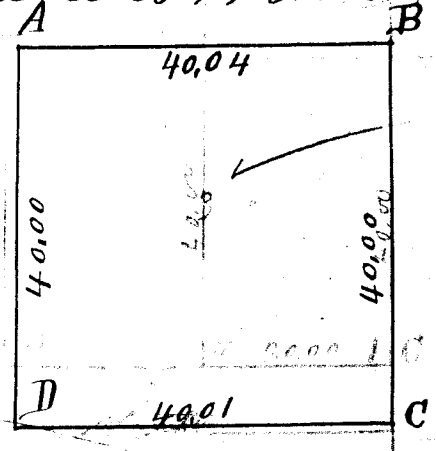
1 Survey of the E. 1/2 of the S.E. 1/4 of Sec. 31 T. 5. S. Range. 3 East Made April 9 1853 for John Mosier  
 1 Section Corner Pre established  
 2 2<sup>nd</sup> Part  
 3 Beech. S. 20 E. 44 links (15 inches diameter)  
 4 Beech 12 in S. 48° W 15 links variation 3.45  
 I certify the foregoing Plat & Notes to be correct  
 A. Jack Linzee Surveyor M. Co. O.



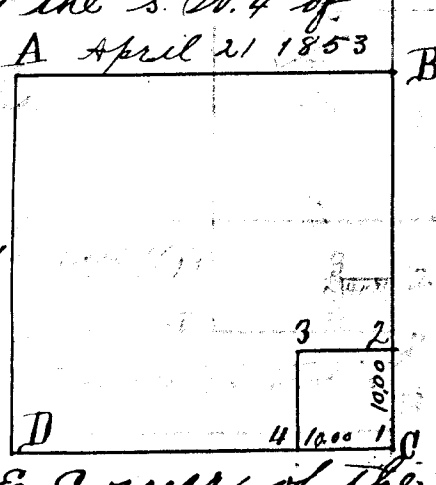
2 Survey of 2 acres out of the S.E. corner of the E. 1/2 of the S.E. 1/4 of Sec. 31 T. 5. S. R. 3. E. Made April 15 1853 for Pratt  
 notes and Plat viz  
 1 Sec. corner Pre established  
 2 Lym. 8 in N. 85° W 43 links  
 3 no Witness taken  
 4 Hickory 10 in North 31 links  
 I certify the foregoing Plat and notes to be correct  
 A. Jack Linzee Sur. M. Co. O.



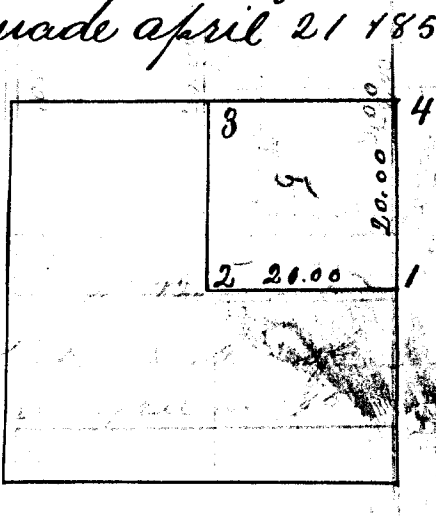
3 Plat and notes of the survey of the S.W. 1/4 of Section 14 T. 6. S. R. 2. E. Made April 15 1853 for Job. Lacy  
 A Pre Established  
 B Sec. corner pre. Established  
 C 2<sup>nd</sup> Post pre Established  
 D Buckeye 12 in N. 30 W. 8 links  
 I certify the above to be correct  
 A. Jack Linzee Sur. M. Co. O.



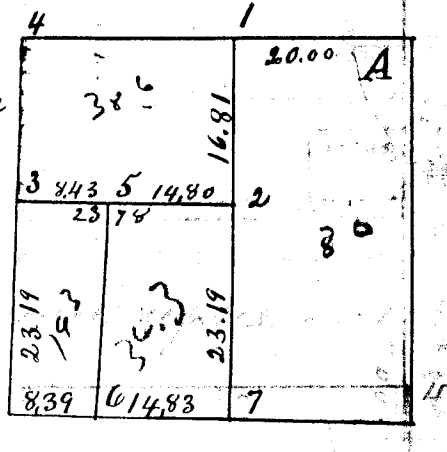
4 Plat and notes of a survey of the S.E. corner of the S.W. 1/4 of Section 19 T. 7 R. 3. 10 acres made for Crossoff  
 1 pt pre established  
 2 Beech 30 in N. 5 W 10 links  
 3 Oak 28" S. 30 links  
 4 Stake in Road without witness, variation 3.20  
 I certify the foregoing to be correct  
 A. Jack Linzee Sur. M. Co. O.



5 Plat and notes of a survey of the N.E. corner of the S.W. 1/4 of Sec. 19 T. 7 R. 3. 40 acres survey made April 21 1853  
 1 Pre established 20.00 North of 2<sup>nd</sup> Post  
 2 ash 10 in N. 36 E. 28 links  
 3 Stake in fallen timber  
 4 Pre Established  
 I certify the foregoing to be correct  
 A. Jack Linzee Sur. M. Co. O.



6 Plat and notes of a survey of the N.E. 1/4 S.W. 1/4 of Sec. 19 T. 7 S. R. 3. E. made for  
 Apr. 22 1853 also E. 1/2 S. Part of W. 1/2 S.W. 1/4  
 1 Stone in fallen timber  
 2 B. Oak. 18 in N. 5° E. 2 links  
 3 Stake & Stone on Sec. line  
 4 2<sup>nd</sup> Stone 5<sup>th</sup> Stone 6 Stake in Road 7 Pre Est  
 I certify the foregoing to be correct  
 A. Jack Linzee Sur. M. Co. Ohio



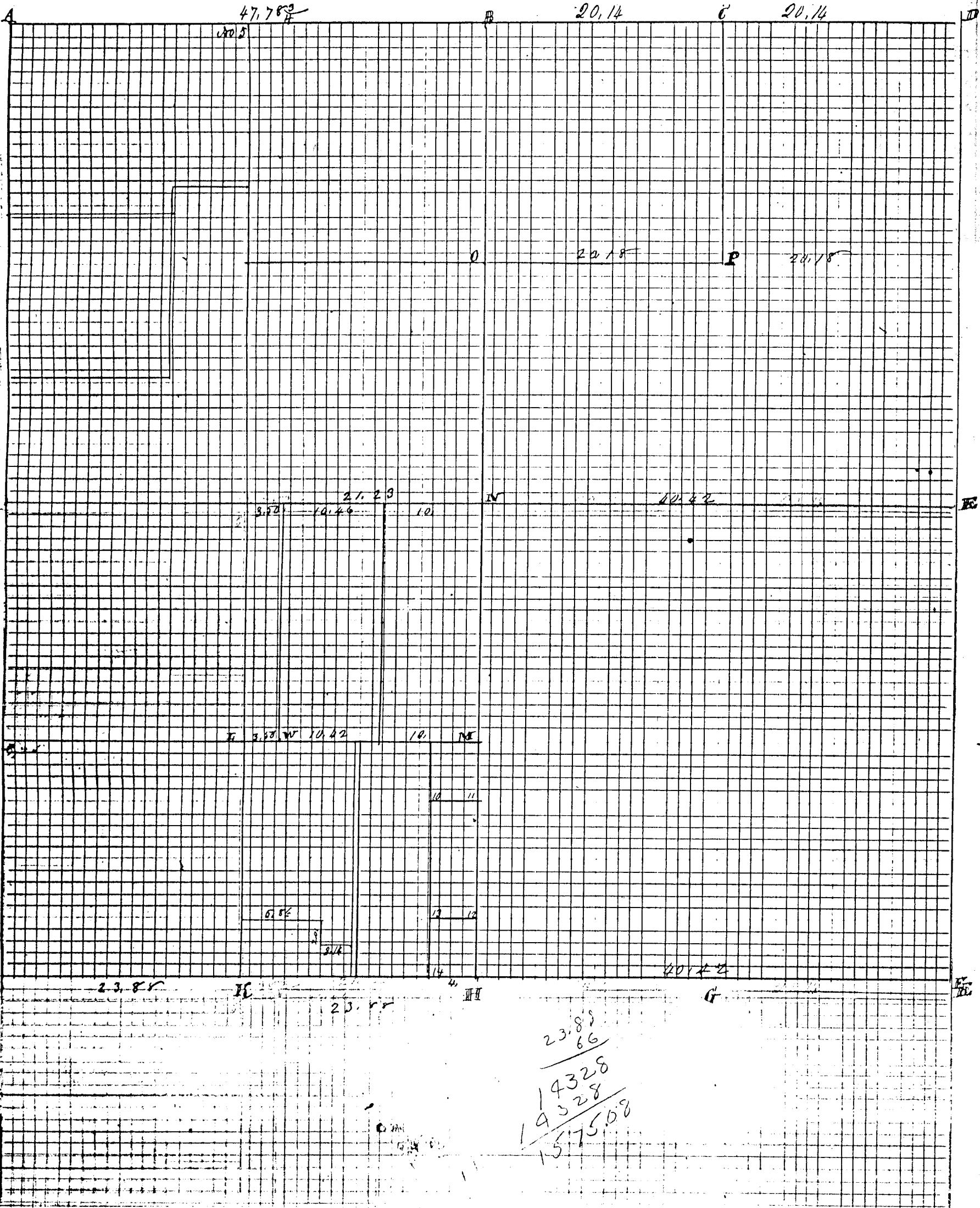
# ROAD RECORD

3100

1

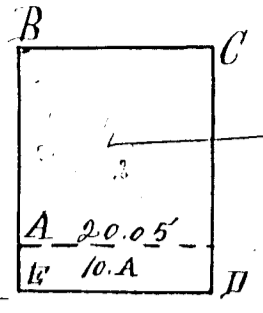
April 5<sup>th</sup> 1877. Notes of survey made by me for  
 John Pohlman and Henry Bodek commencing at N.E.  
 corner of John Pohlman's 7 Acre being at the S.E. Post of  
 sec 31 T55 Range 3 East. Running South to the  
 St Marys Road to a line corner Walnut Stump 50 W 45 S  
 from which bears Stone 15, 8.4 as witness being N 45 W 75 links  
 Thence West 24 chains to a Stone 12, 8.4 from which bears  
 Henry Bodek 6, 4 25 1/2 W 36 Thence S 66 W

Planted Stake and Stone 14, 12.6 at the N.W. corner  
 of Out Lot no 1 East of Celina At the instance of  
 Mrs. Lineman April 10<sup>th</sup> 1877. M. Schuyler Surveyor  
 on lots no 132 deficiency of 33 links



*Surveys of Mercer County Ohio*

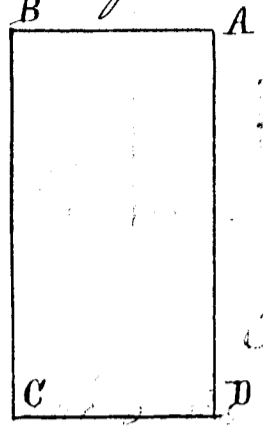
36 Notes and Plat of the survey of the S.W. 1/4 of the S.W. 1/4 of section 26 T. 5 S. R. 2 East also of the N.E. end of the N.W. 1/4 of sec. 35 T. 5 S. R. 2 E. 10 acres made February 16<sup>th</sup> 1854 at a variation of 3° 3'



A See corner Pre Established D Beech 26 N. 15 W. 16 links  
B Sugar 4<sup>in</sup> N. 28 E 57 links E Oak Stump 30<sup>in</sup> N. 73 E. 17 links  
C Beech 10 N. 73 E 22 " I certify the foregoing to be correct

A Jack Linze Sur. M. Co. O.

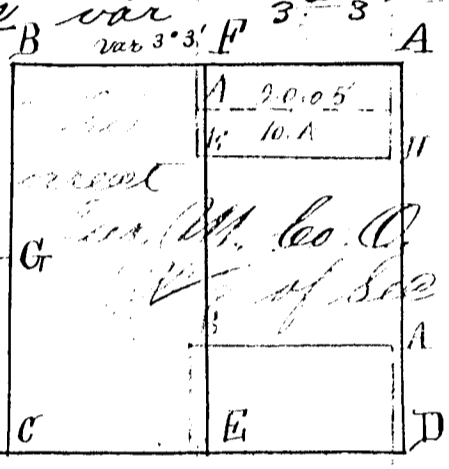
37 Notes and Plat of the survey of the E 1/2 of the S.W. 1/4 of sec 22 T. 5 S. R. 3 East made Feb 24<sup>th</sup> A.D. 1854 for



Freddie Lutz var 3.5'  
A Hickory 8 S. 23 W. 28 links  
B Hickory 30 S. 24 E. 12 "  
C Beech 20 S. 60 W. 11 "  
D gr Post Dogwood 4 N. 55 W. 2 links

I certify the foregoing to be correct  
A Jack Linze Sur. M. Co. O.

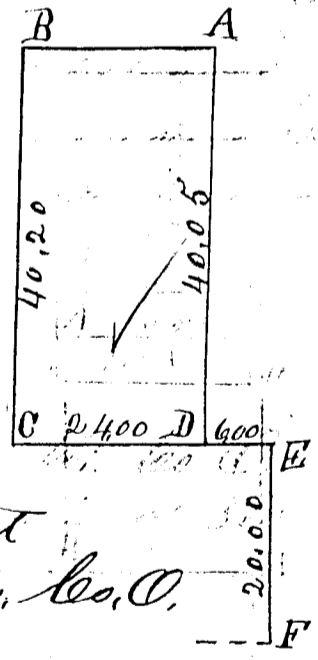
38 Notes and Plat of the survey and subdivision of the N.E. 1/4 of section 31 T. 5 S. R. 3 East also S. 1/2 of N.W. 1/4 of same sec made March 7<sup>th</sup> 1854 for Ross Miller & Simmons var 3° 3'



AA See corner of 29, 30, 31 & 32 Original Witnesses  
BB gr Post N. side 31 links E  
CC Center Post Beech 12 S. 25 E. 21 links  
D gr Post E. side 31 Original Witnesses  
E Beech 15 S. 20 E. 44 links  
F Oak 24 East 24 made  
G Hickory 10 S. 31 W. 32 "  
H  
I gr Post

I certify the foregoing to be correct  
A Jack Linze Sur. M. Co. O.

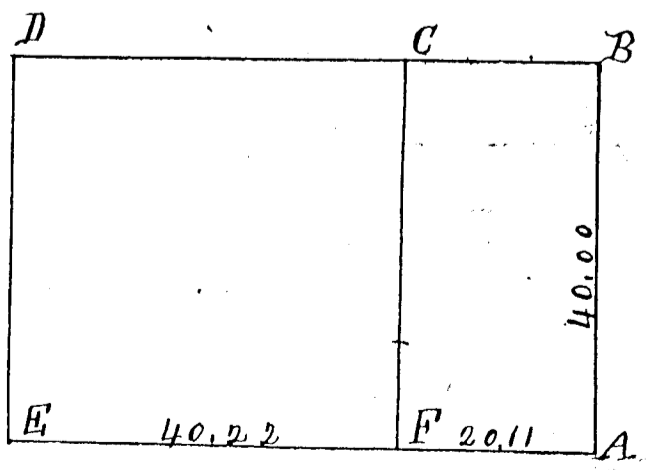
39 Notes and Plat of the W 1/2 of S.W. 1/4 of sec 18 T. 5 S. R. 3 E E made March 14<sup>th</sup> 1854 for B. Quart and others var 3.5'



A Oak 36 S. 81 E 30 links  
B lime stone 30 lbs set by Heald  
C Beech 13 S. 47 E. 33 links  
D lime stone 12 lbs & W. Oak 15 S. 4 W 109 links  
E Post in Road 6.25 Ch's East of D.  
F W. Oak 36 N. 10. W. 12 links

I certify the foregoing to be correct  
A Jack Linze Sur. M. Co. O.

40 Notes and Plat of the survey of the S.W. 1/4 & 1/2 of S.E. 1/4 of sec. 35 T. 5 S. R. 2 made for Shumer and Waggoner March 21<sup>st</sup> 1854



A See corners Original Witnesses  
B Oak 30 S. 33 W. 30 links  
C B. Oak 4 S. 20 E 9 "  
D  
E Post in Road  
F B. Oak 6 N. 50 W. 21 "

I certify the foregoing to be correct  
A Jack Linze Sur. M. Co. O.

# ROAD RECORD

3100

Sec 35 T55 R16 Liberty Township

A on the 18<sup>th</sup> day of March A.D. 1869 at the instance  
of John White Frank Stone and Frank Bryant  
N.W. corner of Sec Stone 20.18.12 in Pike Planted a stone on  
Stone corner Stone witness West 50 Stone Wt 845 645 2 Stone Wt N45 W 40 L  
B N $\frac{1}{2}$  P by me in a former survey stone 23.4.5 triangular from which  
bears Hickory 7 N47 $\frac{1}{2}$  E 42 Buck 12 & 4 W 34 links  
C & Stone 18.12.6 to plant Beech 22 24 26 Red Elm 7 N67 $\frac{1}{2}$  W 39  
D Stake and stone 23.17.17 Stone Wt West 30 L White Elm 14 N68 E 60 L  
E W $\frac{1}{2}$  P stone by me in former survey stone witness 845 645 and N45 W 45 links  
E stone to plant 18 14.8 inches stone witness North 40 links  
G Stone corner used Beech 22 N77 $\frac{1}{2}$  E 27 Pecan 22 27 W 30 Stone Wt 35  
I stone in Pike Stone witness North 50 links

The above notes and Plat are correct to the best of my belief.  
Done at Liberty Township Pa. D. 1889 at the instance  
of John White Frank Stone and Frank Bryant  
Received from the note Book 23 Pages 6 and 7 before  
Celina Aug 24<sup>th</sup> 1892 M. Schuyler Surveyor Stone Wt 845 645  
Comp

Notes of survey made by me June 29<sup>th</sup> 1889 in Sec  
33 T4 S. Range 3 East at the inst of Michael Miller  
and C. B. Collins for school lot in the West  $\frac{1}{2}$  of N E 4.  
The Old School lot was  $\frac{1}{2}$  Acre clear of Road 2 chains  
North and South and 2 $\frac{1}{10}$  chains East and West now as surveyed  
to the center of Road contains  $\frac{1}{100}$  Acre or 1 Acre clear of Road  
Notes of corners in survey of school lot  
No 1 Stone corner in center of Road stake deep brick bats Lime Stone 15.1.6  
" 2 Corner again upon by Patterson & Miller & Stone 16.9.6 inches  
Cedar tree 24 N62 $\frac{1}{2}$  W 61 L White Oak 30 N57 E 140 L same  
" 3 S. E. Buttment of Bridge the S. W. corner thereof N4 E 118 $\frac{1}{2}$  L  
in Pike & Stone 18.11.7 Being 2 $\frac{1}{10}$  chains South of No 2  
" 4 Being the S. W. corner of old school lot as agreed upon by parties  
Stake 15 Lime Stone 11.8.3 Cottonwood 18 N71 W 116  
" 5 being 2 $\frac{1}{10}$  chains West of No 4 and 2.17 chains South of No 1  
Stake bats and lime stone 11.6.6 inches

The above notes are correct to the best of my knowledge & belief  
Celina July 1<sup>st</sup> 1889  
M. Schuyler Surveyor

The above notes were checked by me from note Book 23  
Pages 20 and 21 Aug 26<sup>th</sup> 1892 M. Schuyler Surveyor