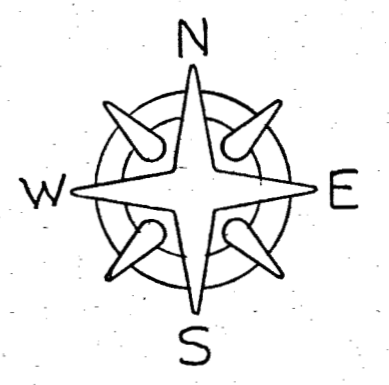


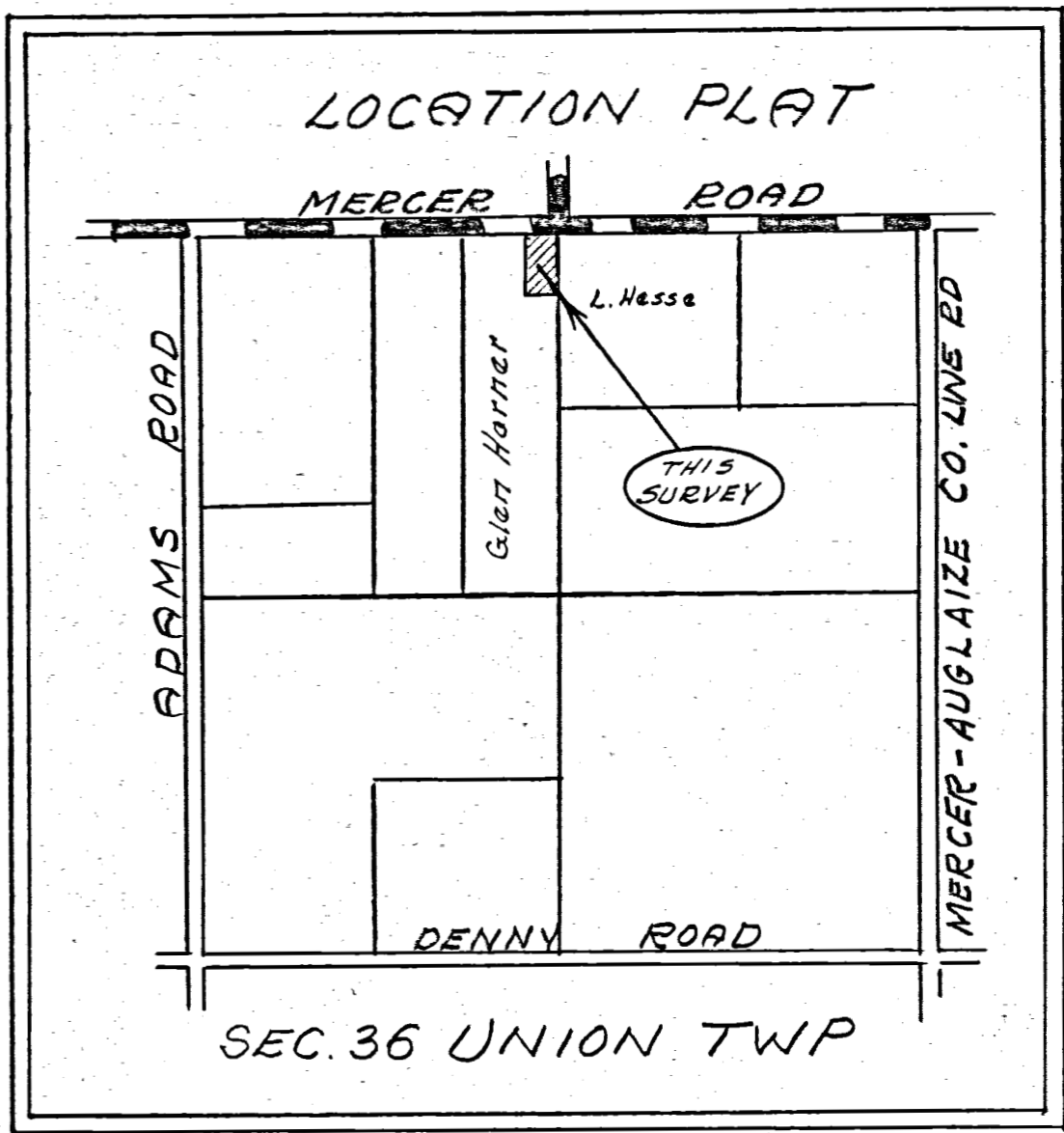
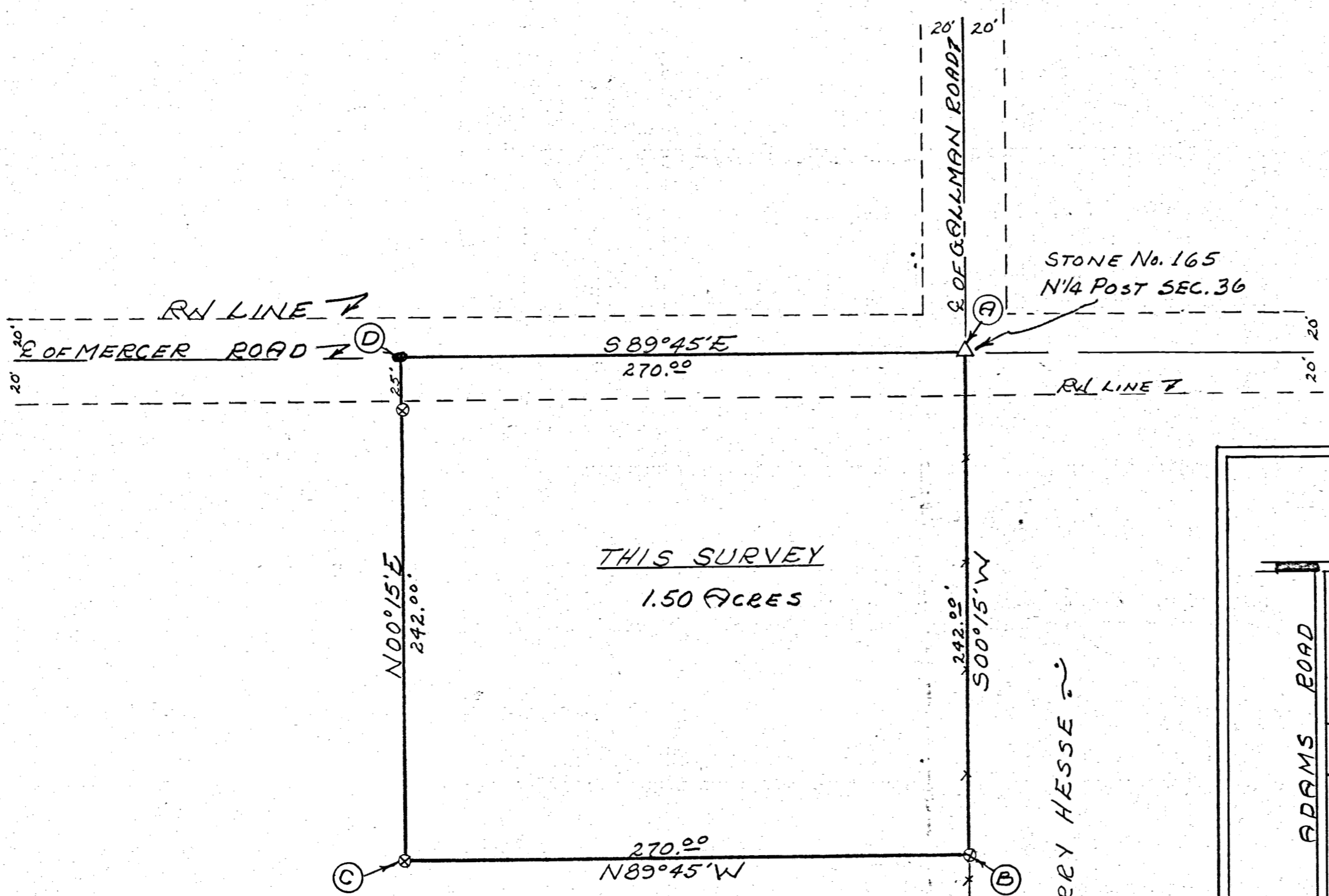
HARNER SURVEY

Pt. E 1/2 E 1/2 NW 1/4 SEC. 36
 T4S, R3E, UNION TWP
 MERCER COUNTY OHIO
 APRIL 1973



SCALE 1" = 50'

- Legend:
- △ = Section Stone
 - ⊗ = Patented Survey Stakes
 - = Railroad Spikes



~ GLEN HARNER ~

~ LARRY HESSE ~

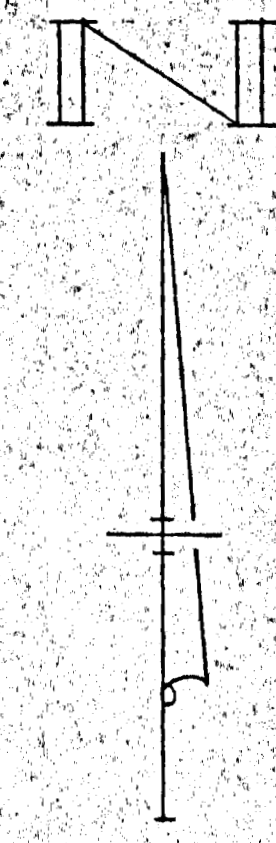
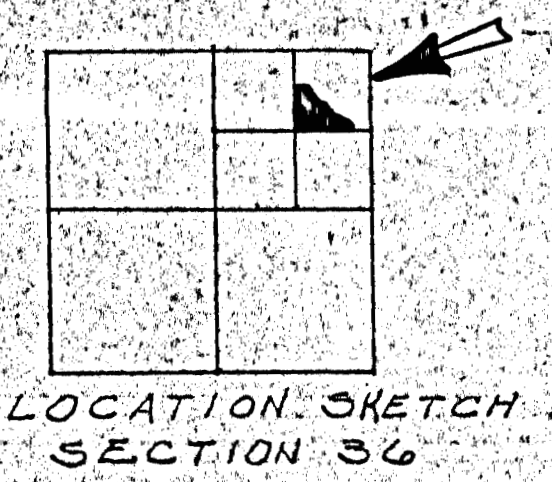
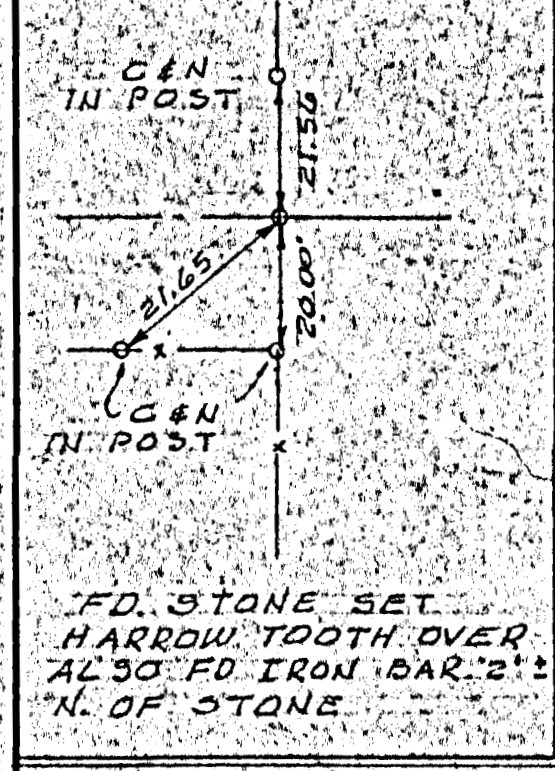
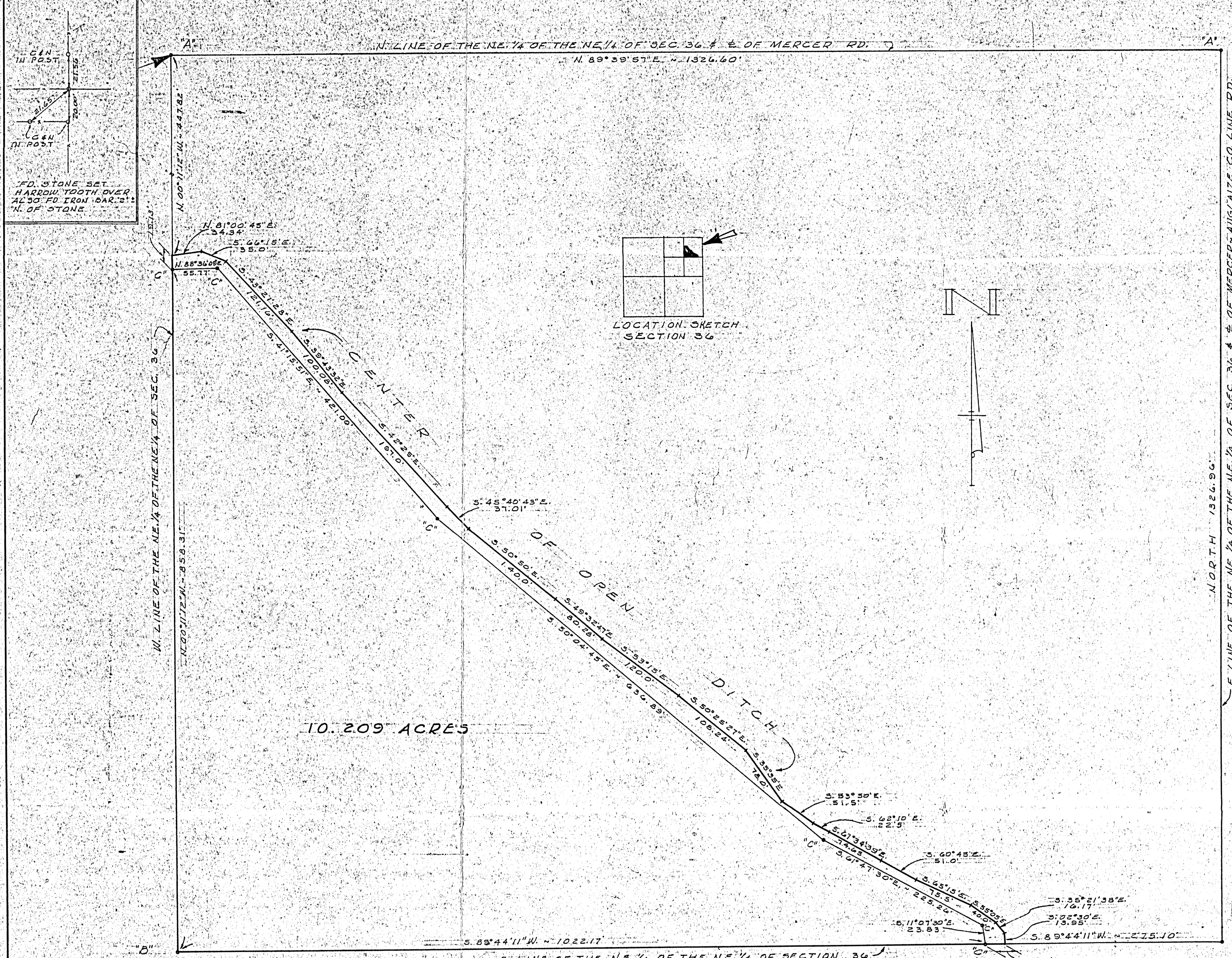
SURVEYOR'S CERTIFICATE:

This survey at the request of and for the exclusive use of Glen Harner.
 I hereby certify this survey showing Sec. stones and iron stake markers to be correct to the best of my knowledge.

4/25/73
 DATE

B. R. Gebhart
 B. R. GEBHART P.S. No. 3909





LEGEND

- "A" = STONE FD. FROM SURVEY DATED 1872, & RECORDED IN SURVEY BOOK N^o 3, PAGE 101.
- "B" = R.K. NAIL SET IN TOP OF CONCRETE CORNER POST.
- "C" = 5/8 INCH IRON BAR SET.

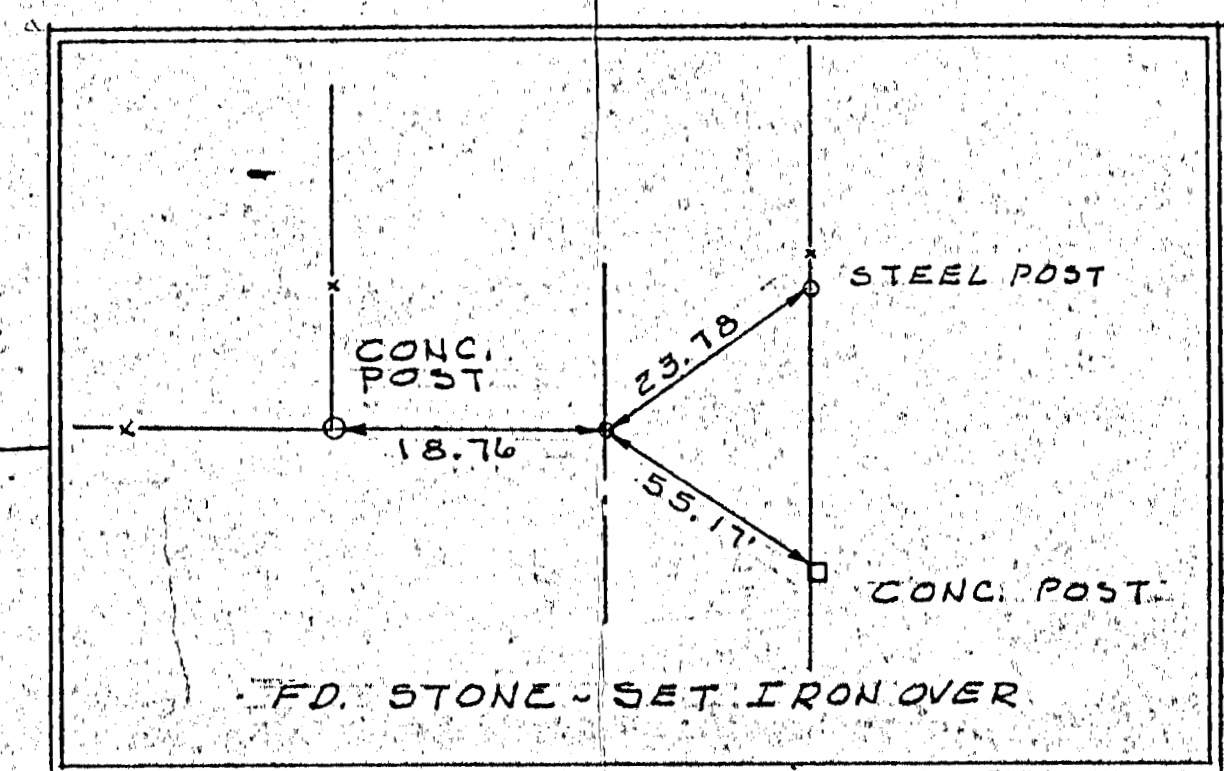
SURVEYED BY Gordon L. Geeslin
 GORDON L. GEESLIN
 REGISTERED SURVEYOR 5372



SURVEY FOR TIM KENNEDY IN THE NE 1/4 OF THE NE 1/4 OF SECTION 36, TOWN 4 SOUTH, RANGE 3 EAST (UNION TOWNSHIP), MERCER COUNTY, OHIO.

MAY, 1976

SCALE 1"=60'



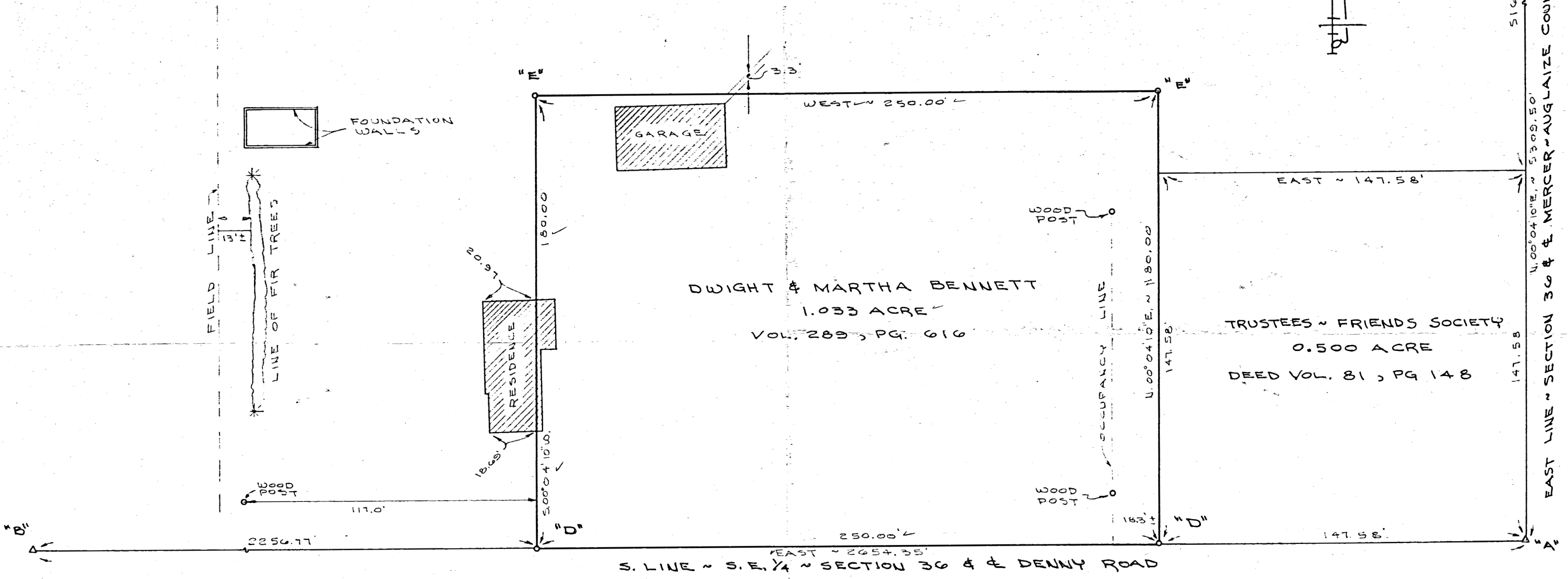
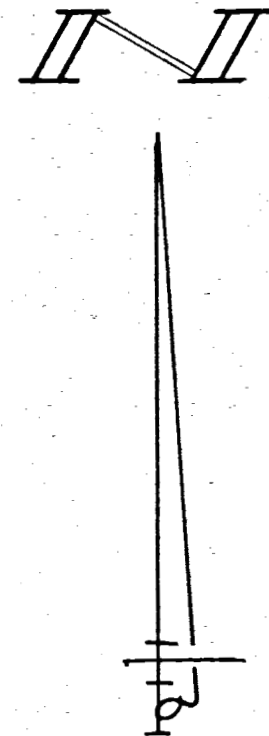
THE EAST LINE OF THE N.E. 1/4 OF THE N.E. 1/4 OF SECTION 36 WAS ASSUMED TO BEAR NORTH-SOUTH. ALL OTHER BEARINGS WERE CALCULATED FROM ANGLES TURNED.

DRAWN BY	
DATE	
CHECKED BY	
REVISION DATE	
COMM. NO.	
SHEET NO.	

LEGEND

- "A" = CORNER STONE AT S.E. CORNER ~ SECTION 36.
- "B" = CORNER STONE AT S. 1/4 POST ~ SECTION 36.
- "C" = CORNER STONE AT N.E. CORNER ~ SECTION 36.
(DUG FOR STONE AT E. 1/4 POST WITHOUT SUCCESS.)
- "D" = RAILROAD SPIKE STAMPED "5372".
- "E" = 5/8" X 30" IRON BAR SET.

W. H. KENNEDY, INC.
VOL. 265, PG. 725



SURVEYED BY Gordon L. Geeslin

MERCER CO. ENGR.
REVIEWED

GORDON L. GEESLIN
REGISTERED SURVEYOR
NO 5372



BENNETT SURVEY
PART OF THE S.E. 1/4 OF SECTION 36,
TOWN 4 SOUTH, RANGE 3 EAST (UNION
TWP.), MERCER COUNTY, OHIO.

SEPT. 2, 1988

SCALE 1" = 30'

MERCER CO. ENGR.
RECEIVED

03-36-400-002

2-80
1A0

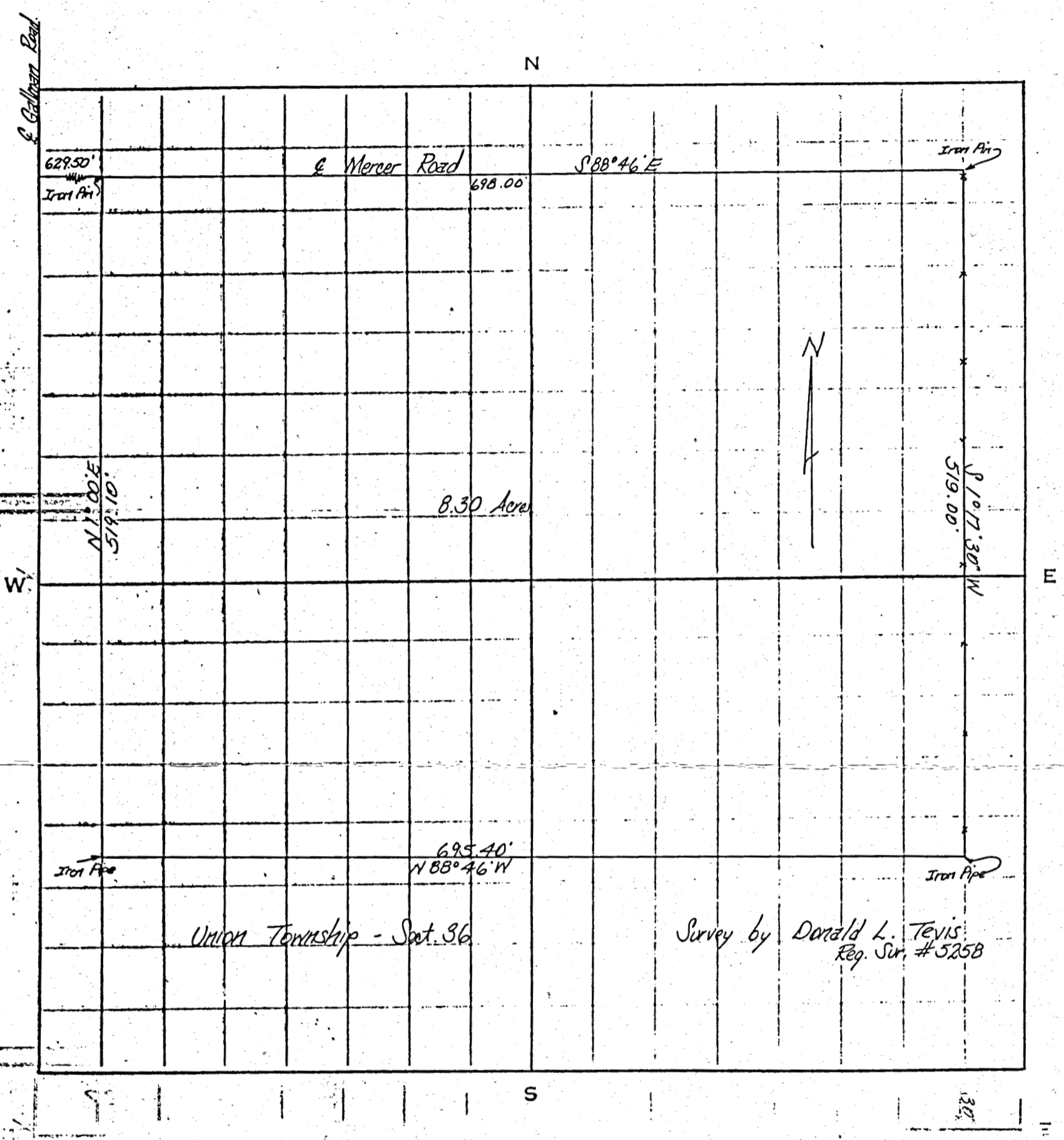
Vorhees Sec. 36 Union

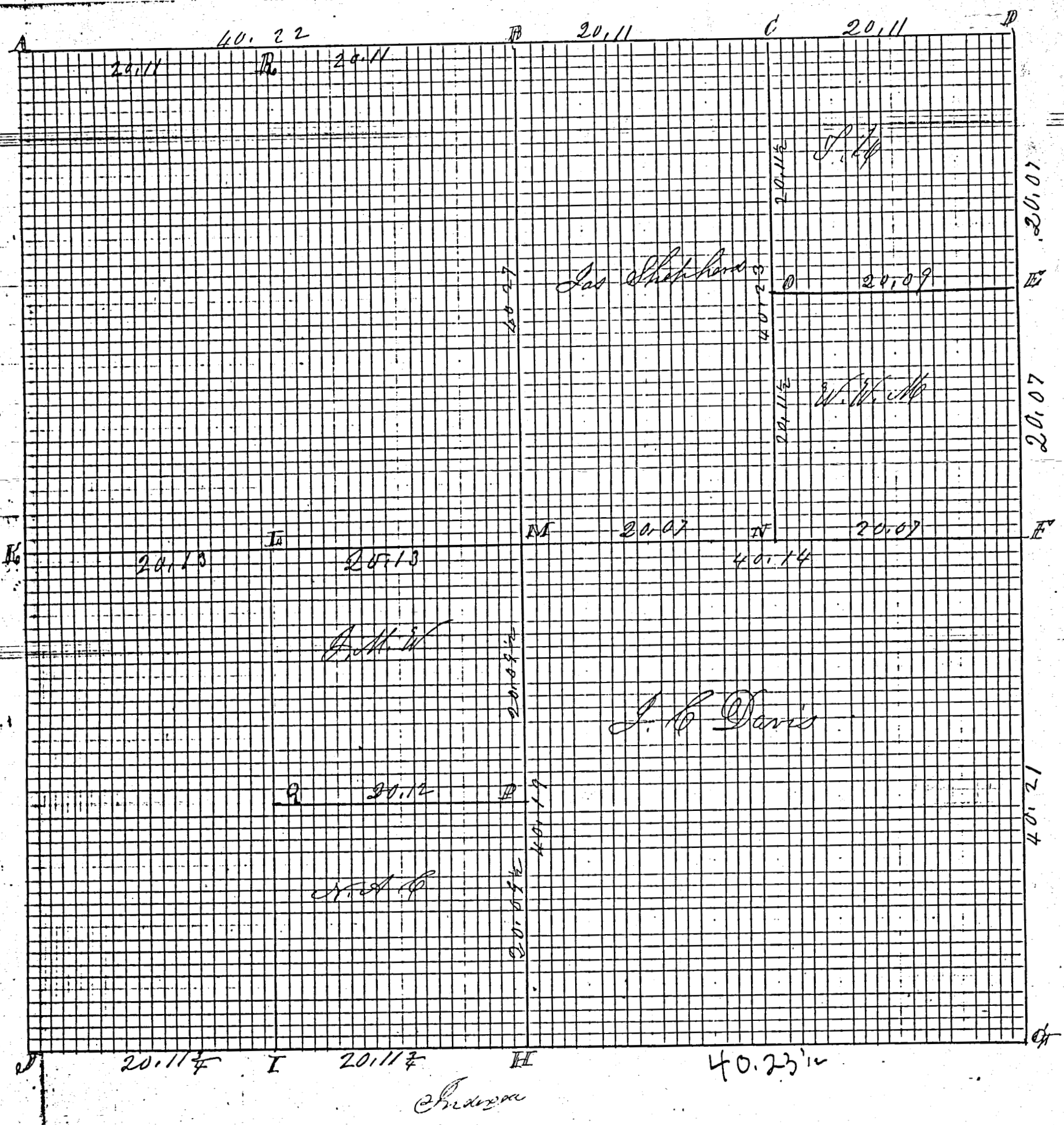
140

SURVEY No. _____ In Town _____ of Range _____ East. Plat and Notes of Survey made by me on the 27th day
 of May, A. D. 19 67, in Sec. 36, Town _____, of Range _____, at the instance of
 Mr. Vorhees

The Johnson-Watson Co., Dayton, Ohio—N-7609

BK4





ROAD RECORD

Sec 36 T 4 S R 3 E Union Township

Plot and notes of survey made by me in Sec 36 T 4 S R 3 E
 on the 29 and 30th days of Nov 1872 and Dec 3rd 1872
 at the Instance of J. C. Davis W. W. Merlin Thomas
 Upton, James Shepherd John M. Wright & Nancy A.
 Covall, Chaimen sworn John M. Wright and B. C. Merlin

- A Stone Burr Oak 20 x 55 @ 13 1/2 Stone @ 45 W 50 Wetnes
- B N 1/4 P trees lost - line bisected Stake bet and Stone 1 @ 7 1/2
 Willow 5 x 39 W 57 Burr Oak 18 x 15 @ 183
- C Stake bet and Stone 12, 8, 8 White Ash 15 x 15 1/2 @ 71
- D N. E corner of Sec I find stump high W Ash 180 x 143 @ Stone
 S. b Stone 18, 12, 9 White Oak 36 x 72 1/2 @ 77 Stump
 S. b and Stone 18, 12, 9 W Oak 18 x 15 @ 223 1/2 W Ash 18 x 22 @ 239
- E S. b Stone 10, 10, 7 Elm 10 @ 47 1/2 @ 53 Elm 11 x 30 W 42 3/4 @ 53
- F E 1/4 Post I find the stump of Elm 12 @ 15 @ 25 and Beech 18 @ 18 @ 22 @ 25
 Stake bet and Stone 16, 8, 7 B Oak 48 @ 41 @ 92 Burr Oak 24 x 44 @ 90
- G S. E corner of Sec I find W Oak 10 x 62 @ 13 green Spruce 18
 @ 62 W 40 standing near S. b Stone 16, 8, 4 W Oak 20 @ 32 @ 62 @ Elm 18 x 60 W 70 @ 25
- H line bisected trees being lost Stone Stone corner East 12 1/2 links
- I Stone 11, 7, 6 Stone corner East 18 1/2 links
 Burr Oak 8 @ 22 1/2 W 99 1/2 Burr Oak 8 @ 55 W 90
- J S. b Stone 20, 17, 14 Stone corner East 25 links Stone 14 @ 2
- K W 1/4 P I find stump of W Oak 36 x 30 @ 7 also Post of Beech 18 @ 10 @ 30
 Stake bet Stone 14, 14, 7 Burr Oak 20 x 72 1/2 @ 62
- L S. b Stone 22, 7, 7 Red Elm 8 @ 33 @ 14 1/2 Beech 26 @ 65 @ 45 1/2
- M center of Sec at crossing of right lines from 4 Posts
- N S. b Stone 14, 12, 8 B Ash 8 @ 40 1/2 @ 41 Beech 20 @ 83 W 49
- O S. b Stone 4, 6, 1 @ 11 Elm 16 @ 34 1/2 @ 57 1/2 Hickory 6 @ 44 @ 8 1/2
- P S. b Stone 8, 6, 6 Burr Oak 12 @ 88 @ 18 1/2 B. Walnut 12 x 16 @ 89
- Q S. b Stone 12, 8, 8 Red Oak 18 x 53 W 72 White Hickory 25 x 33 W 62 1/2
- R S. b Stone 10, 6, 5 W Ash 10 @ 58 1/2 @ 67 White Ash 10 @ 20 @ 80
- S S. b Stone 16, 10, 8 Red Oak 14 x 15 @ 91 Burr Oak 40 @ 42 1/2 @ 83 1/2

The above and foregoing I certify correct
 Dec 3rd 1872
 M. Schuyler Co Sur of Merce Co Vir

The above notes of survey were copied by me from
 Note Book 18 Pages 49, 50 and 51 and are now in the box of my box
 Belina June 5th 1892
 Marcus Schuyler Surveyor