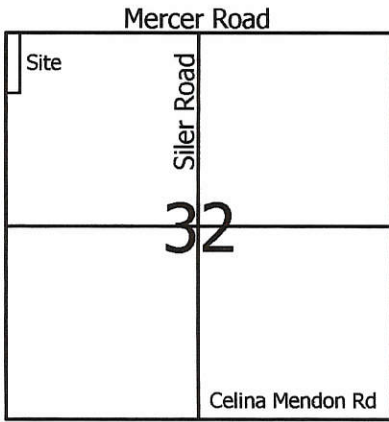


0332100003

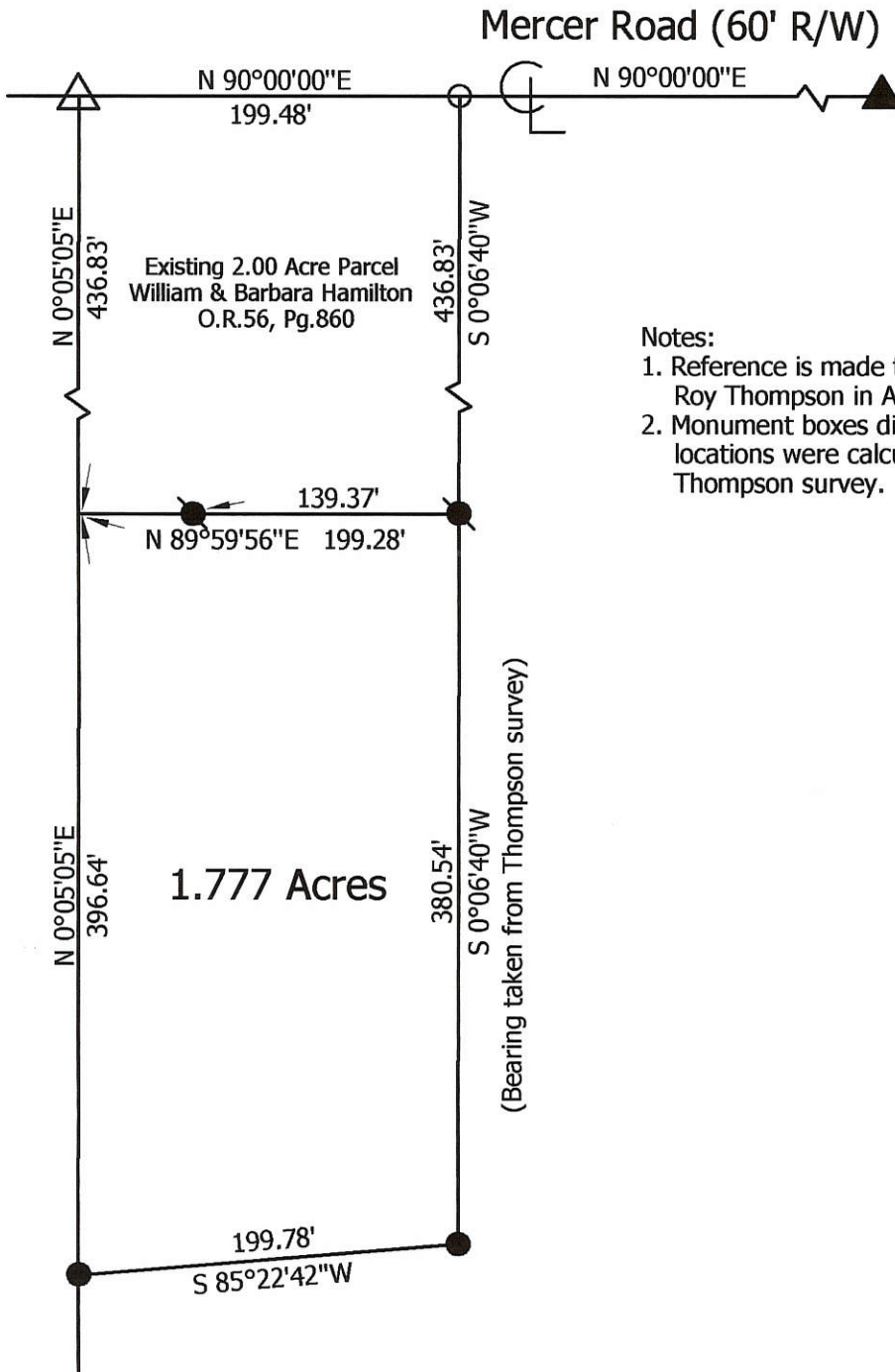
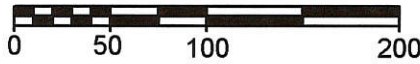
03-6 ✓



Legend:

- ▲ Monument Box @ the N1/4 Post of Section 32
- △ Monument Box @ the NW corner of Section 32
- Iron pin found (Thompson)
- 5/8" X 30" Iron Pin w/cap set
- P.K. nail found (Thompson)

Scale: 1" = 100'



Notes:

1. Reference is made to a survey by Roy Thompson in April 1998.
2. Monument boxes did not have pins, locations were calculated from Thompson survey.

Marbaugh Land Surveying

1210 Yorkshire Court
Celina, Ohio 45822
(419) 586-4293

Kent B. Marbaugh
Kent B. Marbaugh P.S.7421



Hamilton Survey

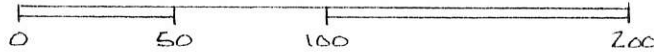
State of: Ohio County: Mercer
 Township: Union Sec: 32 Town: 4S Range: 3E
 City/Village: _____ Subdivision: _____ Lot: _____
 Deed Ref: Vol.221, Pg.262 Date Surveyed: 8-26-05

Approvals: _____
 Agency: Board of Health Township Zoning Inspector _____ County Engineer _____
 Date: _____

CHRISTIAN SURVEY
PART NW 1/4, SEC. 32, T4S, R3E, UNION TWP.
MERCER COUNTY, OHIO



SCALE 1" = 50'



LEGEND

- △ STONE REF
- NAIL SET
- IRON PIN SET.

SEC. 32- UNION TWP

NW COR SEC. 32
N. LINE NW 1/4 SEC. 32 & MERCER RD. ASSUMED EAST-WEST
EAST. 199.48' 30.00' N 1/4 POST SEC. 32

21.50

2.000 ACRES

THE GRANTOR RESERVES THE RIGHT OF INGRESS & EGRESS TO THE RESIDUE LANDS FROM WHICH THIS PARCEL IS TAKEN, OVER, UPON, THRU A DRIVEWAY OF UNIFORM 1 ROD WIDTH ALONG THE ENTIRE WEST SIDE OF THIS PARCEL. THE RIGHT OF INGRESS & EGRESS SHALL CONTINUE UNTIL TITLE TO THE RESIDUE LANDS ARE TRANSFERRED FROM THE GRANTOR(S).

SILVER RD.

N 00° 05' 00" E 436.87'

S 00° 06' 40" W 436.87'

BEARINGS TURNED FROM NORTH LINE NW 1/4, & MERCER ROAD ASSUMED EAST-WEST



PLAT BY SURVEY APRIL 1998

Roy F. Thompson, Jr.
ROY F. THOMPSON, JR. REG. SURV# 5379

WEST 199.28'

STONE FOUND
W 1/4 POST SEC. 32

PERMANENT PARCEL No. _____		
Part of: <u>NW 1/4</u> Sec. <u>32</u> T <u>4S</u> R <u>3E</u> <u>UNION</u> Township		
Grantor: <u>CHRISTIAN</u>	Area Retained: _____	Acres
Grantee: <u>HAMILTON</u>	Area Transferred: <u>2.000</u>	Acres
Deed References: <u>VOL 221 Pg 262</u>		
APPROVALS: <u>Brian W. Gensler</u>	Co. Sanitary Engineer	County Engineer
AGENCY: Board of Health		
DATE: <u>1 MAY 98</u>		

03-6

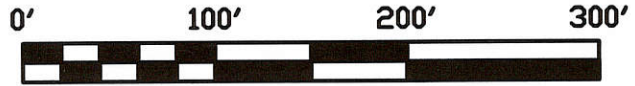
ARMSTRONG SURVEY

PART OF THE E. 1/2 OF THE N.W. 1/4 OF SECTION 32,
TOWN 4 SOUTH, RANGE 3 EAST, (UNION TOWN-
SHIP), MERCER COUNTY, OHIO.
SEPTEMBER 23, 2002

SCALE 1" = 100'

LEGEND

- ⊘ = IRON PIPE FOUND.
- ⊗ = SPINDLE SET.
- ⊙ = 5/8 INCH IRON BAR SET.



N.W. COR.- SEC. 32 N. LINE - N.W. 1/4 - SEC. 32 & $\frac{1}{2}$ MERCER ROAD (60') N.E. COR.- N.W. 1/4- SEC. 32

* BEARING BASED ON MERCER CO. GPS DATA

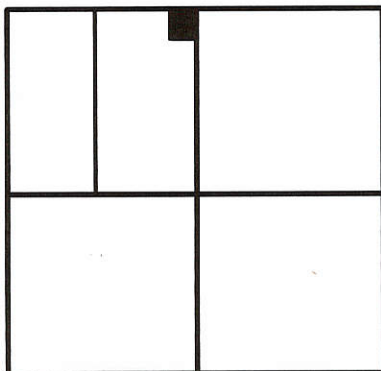
NOTE:

THE BUYER HAS NO IMMEDIATE PLANS TO BUILD. THE BUYER, AT THE TIME OF BUILDING, WILL INSTALL A SEPTIC SYSTEM THAT WILL TIE INTO THE OPEN DITCH TO THE EAST OR SOUTH DEPENDING ON THE BEST OPTION.

BUYER:

VICKY L. ARMSTRONG
3726 DURWOOD LN.
DUBLIN, OHIO 43016

LOCATION SKETCH

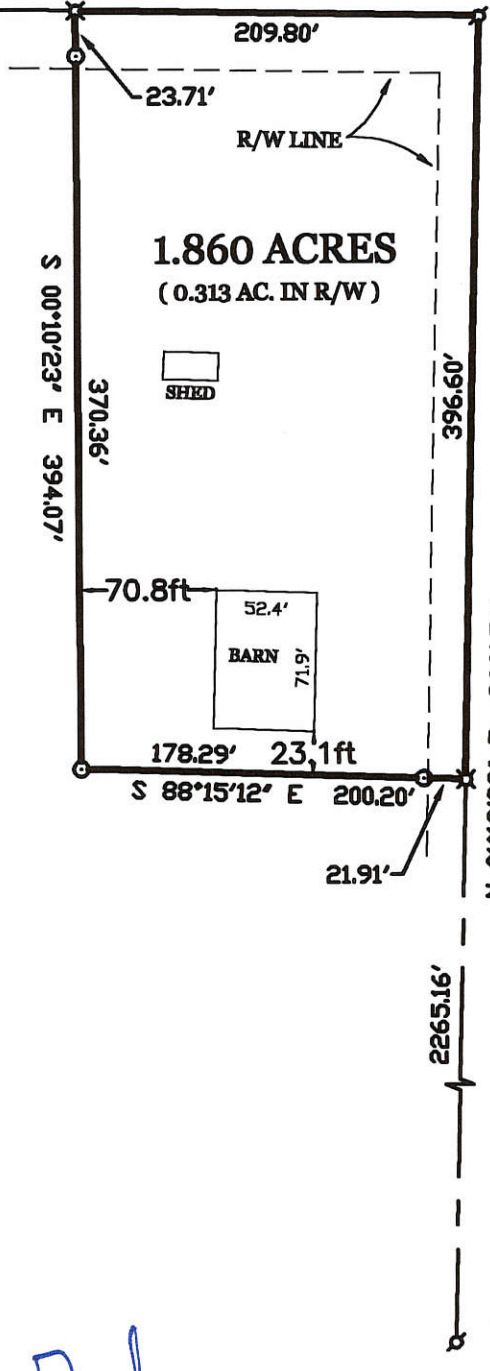


SECTION 32

SURVEYED BY

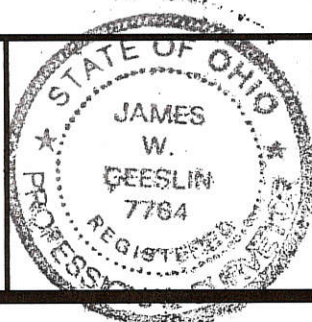
James W. Geeslin

JAMES W. GEESLIN
 P.S. No. 7764



GEESLIN LAND SURVEYING

P.O. BOX 422
 CELINA, OHIO 45822
 PHONE: (419) 586-6155
 FAX: (419) 678-9332



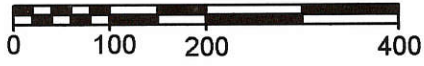
PERMANENT PARCEL No. _____	
Part of _____ Sec. _____ T. _____ R. _____	_____ Township
Grantor: _____	Area Retained _____ Acres
Grantee: _____	Area Retained _____ Acres
Deed References: _____	
APPROVALS: AGENCY: _____	Board of Health Date _____
_____	Township Zoning Officer Date _____
_____	County Engineer Date _____

03-32-100-004

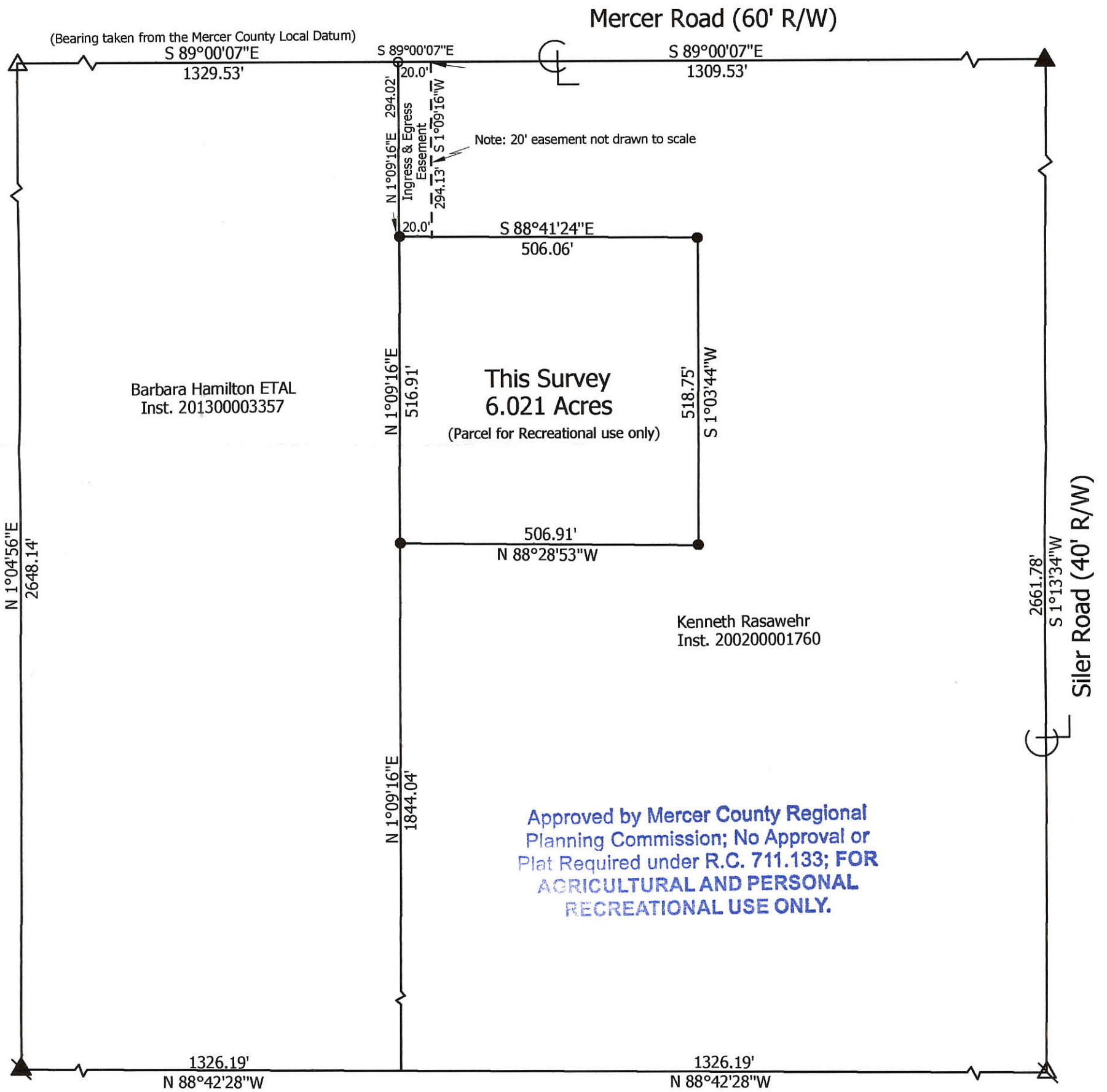
0332100005



Scale: 1" = 200'



Legend:	
	Monument Box @ the NW corner of Section 32
	Monument Box @ the N1/4 Post of Section 32
	Cornerstone @ the center of Section 32
	Iron pin w/cap set on angle over a Cornerstone found @ the W1/4 post of Section 32
	5/8" X 30" Iron pin w/cap set
	Mag nail set



**Marbaugh
Land Surveying**

1901 Carolina Court
Celina, Ohio 45822
(419) 586-4293

Kent Marbaugh
Kent B. Marbaugh P.S. 7421



Rasawehr Survey			
State of: <u>Ohio</u>	County: <u>Mercer</u>		
Township: <u>Union</u>	Sec: <u>32</u>	Town: <u>4S</u>	Range: <u>3E</u>
City/Village: _____	Subdivision: _____	Lot: _____	
Deed References: <u>Inst. 200200001760</u>		Date Surveyed: <u>10-10-15</u>	
Approvals: _____	Board of Health	Township Zoning Inspector	County Engineer
Date: _____			

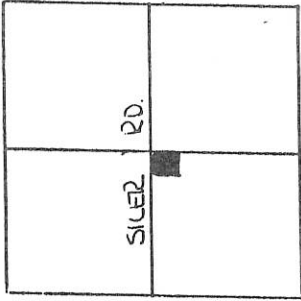
03-6(32)

PART SE 1/4, SEC. 32, T4S, R3E, UNION TWP.
MERCER CO., OHIO

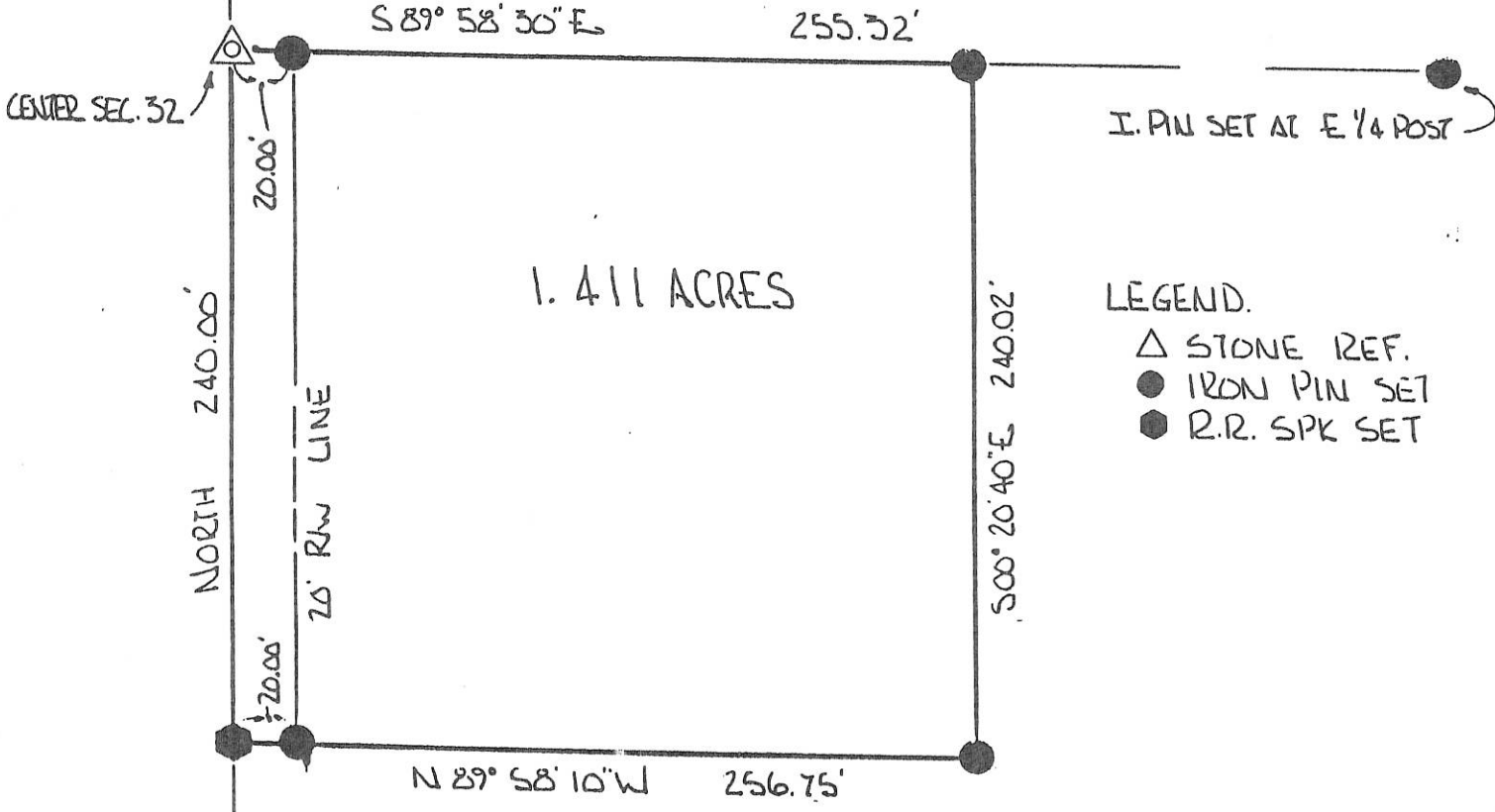
03-6
03-32-400-001

DEED REF. VOL 279 PG 605

SEC. 32-UNION TWP.
MERRILL RD.



CELINA-MENDON RD.



LEGEND.

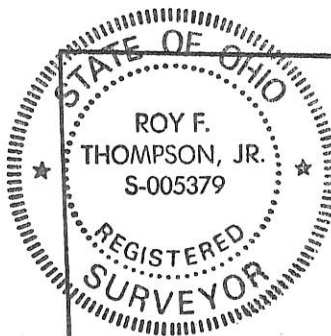
- △ STONE REF.
- IRON PIN SET
- R.R. SPK SET

PARCEL NOT IN FLOOD HAZARD ZONE
"FIRM" PANEL No. 390392 COE013
SEPT 1989

PLAT BY SURVEY JAN. 1995

Roy F. Thompson, Jr.
ROY F. THOMPSON JR. REG. SUR. # 5379

△ S 1/4 POST I.P.N. FND.



PERMANENT PARCEL No. _____	
Part of: <u>SE 1/4</u> Sec. <u>32</u> T <u>4S</u> R <u>3E</u> <u>UNION</u> Township	
Grantor: <u>CHRISTIAN</u> Area Retained: _____ Acres	
Grantee: _____ Area Transferred: <u>1.411</u> Acres	
Deed References: <u>VOL 279 PG 605</u>	
APPROVALS: <u>Bruce W. Grady</u>	
AGENCY: Board of Health	Co. Sanitary Engineer
DATE: <u>13 JAN 95</u>	County Engineer

03-6

NE cor. S.W. 1/4 Sec. 32, T45~R3E, Union Twp.

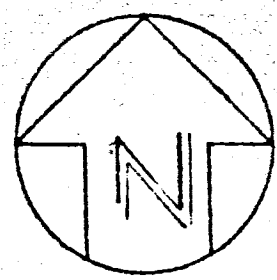
03-32-300-002

13976

Twelve Mile Creek

Siler Road is the east line of S.W. 1/4 of Sec. 32, T45~R3E, Union Twp.

Pt. Hoyt Shaffer Farm - Previous Deed Vol. 248 pg. 132



Survey of part of Southwest quarter of Section 32, T45~R3E, Union Township, Mc County, Ohio



Rolly E. Pion R.L.S. # 5013

Celina-Mendon Rd. S89°41'30"E (previous deeds)

N 89°48'W 358.46' 327.96'

2.345 acres ±

S 70°55'28"W 282.76'

S 59°16'32"

S 89°48'E 262.90'

222.40'

N 00°12'E 12.00'

S 89°48'E 233.46'

N 00°21'E 12.00'

N 00°21'E 231.07'

Point of beginning

Legend

- "A": Stone found per Mercer County Witness
- "B": 5/8" φ iron pin set this survey (See detail)
- "C": R.R. Spike set
- "D": Iron pipe set

S.E. cor. S.W. 1/4, Sec. 32, T45~R3E, Union Twp.

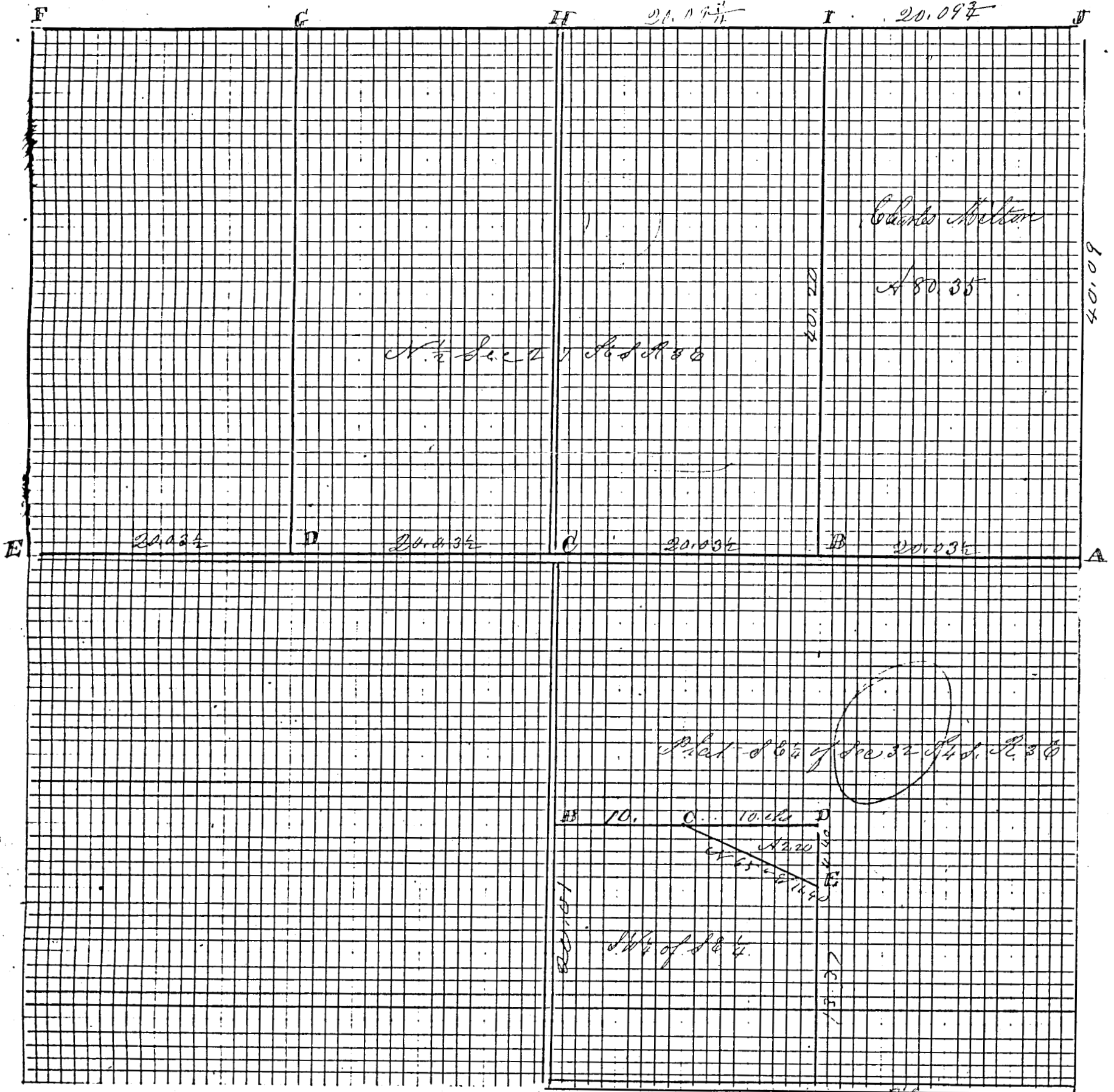
Pion Engineering & Survey 4560 S. Dixie Hwy. Lima, Ohio		SCALE 1" = 50'	DRAWN BY J.E.L.
DATE		APPROVED BY	DRAWING NUMBER

MERCER COUNTY.

27
762
16
17, 8

03-6
95
262

Incorporated



Colombo Nelson

A 80.35

N 1/2 Sec 27 T 36 S R 8 E

40.20

40.09

20.034

20.034

20.034

20.034

Plot 8 1/2 of Sec 32 T 36 S R 8 E

B 10. C 10. D

A 2.20

1/4 of Sec 4

*Grand Title
Anderson*

ROAD RECORD

Sec 27 T6S R3E Franklin Township

Plat and Notes of Survey made by me on the 17th day of December 1890 in Sec 27 T6S R3E East at the Instance of Charles D. Burage and Charles Milton The Top of the Plat being North Survey in the North 1/2 of Section Stone by me in Survey of Sec 26 in 1870

Stone 14. 8. 6 White Ash 188 39 E 7 1/2 Elm 2 N 68 E 95 (was 20 in Aug) Stone Stone Witness and stakes

Stone 19. 12. 8 by me in Road Survey in April 11th AD 1883 Stone Witnesses N 45 W 50 hick White Oak 118 46 E 20 1/2 S

Stone at NW corner of Sec 27 and notes

Stone rest of Stone 14. 12. 6 inches Swamp Sound W Oak 488 644 5/2

Stone by me in former survey Dec 18th 1872

Red Oak 18 N 40 3/4 W Beech 18 S 61 1/2 W 79

Stbs and Stone 16. 8. 7 Burr Oak 14 N 35 W 6 1/2

Copied by me from note book 23 Page 57 this day and is correct to the best of my knowledge & belief
Celina Mercer Co. O. Aug 30th 1892 Marcus Schuyler Sur
Goup

Plat and notes of Survey made by me on the 22nd day of April 1891 in the SW 1/4 of the SE 1/4 of Sec 32 T4S R3E at the Instance of Cyrus B. Collins and Thomas M. Kelley The Top of the Plat being North

Stake found Planted & Lime Stone 20. 12. 6

Stake tile & Lime Stone 16. 8. 5 in Road on road center line

S Lime Stone 14. 10. 3 Sweet Oak 30 N 40 1/2 E 61. 2

S Lime Stone 8. 6. 5 Elm 13 S 37 1/2 W 8 1/2 Elm 18 N 67 W 41 3/4

Stake Bolder 18. 12. 6 B Walnut 24 S 32 1/2 E 192

The foregoing notes of Survey by me are correct

Copied from note Book 23 Page 63 by me this 30th day of August 1892 and is correct to the best of my knowledge & belief
Marcus Schuyler Sur
Compared Mar 4th 1893

BK # 2

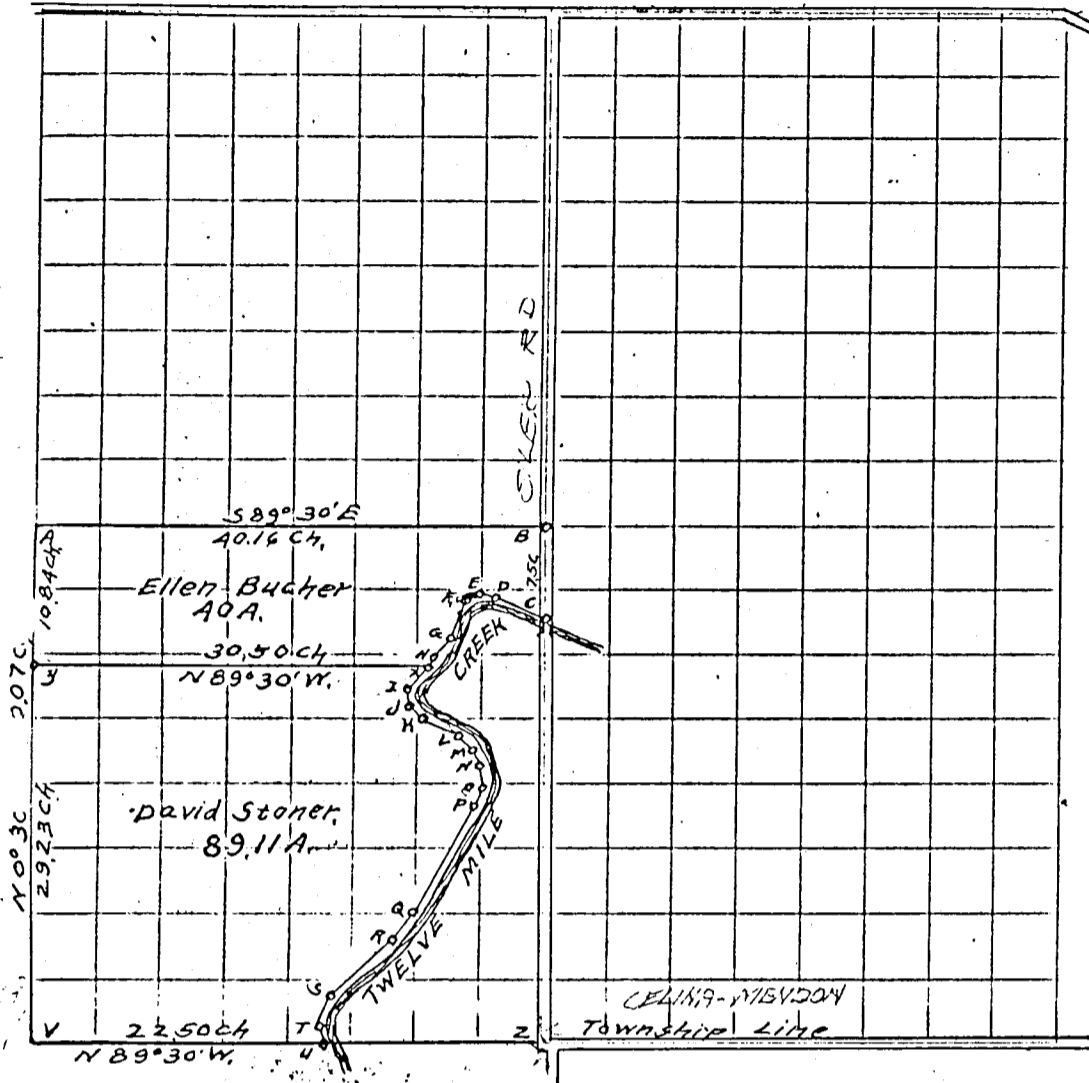
SURVEY No. In Town 45 of Range 3 East. Plat and Notes of Survey made by me on the 15th day of November, A. D. 1912, in Sec. 32, Town 45, of Range 3E., at the instance of D.H. Stoner and George Bucher. The purpose of this survey was to find the area of the land in the S.W. 1/4 of Sec. 32, T. 45, R. 3E., of Twelve Mile Creek, and to cut off 40 acres on the north side of said S.W. 1/4.

D.H. Stoner & Geo. Bucher, Chairmen.

UNION TWP

CONDITION OF ORIGINAL CORNERS.

- "A" Found stone
- "B" Found stone by former survey, assumed its location correct
- "Z" Found limestone
- "Y" Fence Post, corner stone found by M. Hinton on the west side of fence post, June 23d. 1915



CORNERS DESCRIBED. BEARING TREES. D. Course. Dist. BEARING TREES. D. Course. Dist.

A. West 1/4 post Stake & stone	Oak	24"	EAST.	32			
B Center of Section Stake & stone	Elm	3"	N 66° E	40			
X Stake, brick & stone							
Y Stake brick & stone.							
Z S. 1/4 Post Stone	Cement corner post Catalpa	12"	S 61° E	86			
V S.W. corner of section, fence post about 18 inches in diameter							

Stake, post & stone was found on west side of post by M. Hinton for road survey June 23-1915 supposed to be the correct corner.

On the survey of this tract of land the center line of the creek is used as the boundary. The creek is about 38 feet wide.

- AB 589° 30' E 40.16 chains
- BC 50° 30' W 7.50 chains to center of creek.
- From B to working line of survey at head of bridge 7.13 ch.
- CD N 65° 0' W 4.00 ch.
- DE N 73° 30' W 1.50 ch.
- EF S 67° 30' W 1.50 ch.
- FG S 24° 15' W 3.00 ch.
- GH S 44° 0' W 3.00 ch.
- HI S 46° 0' W 3.20 ch.
- HX S 46° 0' W 0.44 ch.
- XI S 46° 0' W 2.56 ch.
- IL S 13° 30' W 1.20 ch.
- JK S 44° 0' E 1.30 ch.
- KL S 68° 45' E 3.50 ch.
- LM S 52° 0' E 2.00 ch.
- MN S 38° 30' E 2.00 ch.
- NO S 5° 30' E 2.00 ch.
- OP S 12° 30' W 1.00 ch.
- PQ S 28° 0' W 9.00 ch.
- QR S 34° 0' W 2.00 ch.
- RS S 48° 30' W 8.00 ch.
- ST S 30° 30' W 3.40 ch.
- TH S 18° 0' E 0.56 ch.
- UV N 89° 30' W 22.50 ch. From center of creek.
- From V to working line of survey 22.25 ch.
- VA N 0° 30' E 40.07 ch.
- From y to center of creek 30.50 ch.
- XY N 89° 30' W 30.15 ch. - 70°
- XY was run parallel to AB
- Twelve Mile Creek is 5 ft from 38 to 40 ft wide.

Dist.	Laz.		Depth		Correcting		Corrected		Corrected		Total	North	South
	N	S	E	W	Lac	Dep't	Lac	Dep't	Lac	Dep't			
1089	1089	0.32	0.00	0.00	1089	0.32	0.00	1089	0.32	0.00	1089	0.32	0.00
713	713	2.18	0.00	0.00	713	2.18	0.00	713	2.18	0.00	713	2.18	0.00
400	400	1.61	0.00	0.00	400	1.61	0.00	400	1.61	0.00	400	1.61	0.00
150	150	0.43	0.00	0.00	150	0.43	0.00	150	0.43	0.00	150	0.43	0.00
300	300	2.23	0.00	0.00	300	2.23	0.00	300	2.23	0.00	300	2.23	0.00
300	300	2.15	0.00	0.00	300	2.15	0.00	300	2.15	0.00	300	2.15	0.00
0.44	0.44	0.30	0.00	0.00	0.44	0.30	0.00	0.44	0.30	0.00	0.44	0.30	0.00
3015	3015	0.24	0.00	0.00	3015	0.24	0.00	3015	0.24	0.00	3015	0.24	0.00
1320	1320	1320	40.24	40.24	1320	1320	40.24	40.24	1320	1320	40.24	40.24	40.24
1089	1089	1089	10.24	10.24	1089	1089	10.24	10.24	1089	1089	10.24	10.24	10.24
713	713	713	10.24	10.24	713	713	10.24	10.24	713	713	10.24	10.24	10.24
400	400	400	10.24	10.24	400	400	10.24	10.24	400	400	10.24	10.24	10.24
150	150	150	10.24	10.24	150	150	10.24	10.24	150	150	10.24	10.24	10.24
300	300	300	10.24	10.24	300	300	10.24	10.24	300	300	10.24	10.24	10.24
300	300	300	10.24	10.24	300	300	10.24	10.24	300	300	10.24	10.24	10.24
0.44	0.44	0.44	10.24	10.24	0.44	0.44	10.24	10.24	0.44	0.44	10.24	10.24	10.24
3015	3015	3015	10.24	10.24	3015	3015	10.24	10.24	3015	3015	10.24	10.24	10.24
1320	1320	1320	10.24	10.24	1320	1320	10.24	10.24	1320	1320	10.24	10.24	10.24
1089	1089	1089	10.24	10.24	1089	1089	10.24	10.24	1089	1089	10.24	10.24	10.24
713	713	713	10.24	10.24	713	713	10.24	10.24	713	713	10.24	10.24	10.24
400	400	400	10.24	10.24	400	400	10.24	10.24	400	400	10.24	10.24	10.24
150	150	150	10.24	10.24	150	150	10.24	10.24	150	150	10.24	10.24	10.24
300	300	300	10.24	10.24	300	300	10.24	10.24	300	300	10.24	10.24	10.24
300	300	300	10.24	10.24	300	300	10.24	10.24	300	300	10.24	10.24	10.24
0.44	0.44	0.44	10.24	10.24	0.44	0.44	10.24	10.24	0.44	0.44	10.24	10.24	10.24
3015	3015	3015	10.24	10.24	3015	3015	10.24	10.24	3015	3015	10.24	10.24	10.24
1320	1320	1320	10.24	10.24	1320	1320	10.24	10.24	1320	1320	10.24	10.24	10.24
1089	1089	1089	10.24	10.24	1089	1089	10.24	10.24	1089	1089	10.24	10.24	10.24
713	713	713	10.24	10.24	713	713	10.24	10.24	713	713	10.24	10.24	10.24
400	400	400	10.24	10.24	400	400	10.24	10.24	400	400	10.24	10.24	10.24
150	150	150	10.24	10.24	150	150	10.24	10.24	150	150	10.24	10.24	10.24
300	300	300	10.24	10.24	300	300	10.24	10.24	300	300	10.24	10.24	10.24
300	300	300	10.24	10.24	300	300	10.24	10.24	300	300	10.24	10.24	10.24
0.44	0.44	0.44	10.24	10.24	0.44	0.44	10.24	10.24	0.44	0.44	10.24	10.24	10.24
3015	3015	3015	10.24	10.24	3015	3015	10.24	10.24	3015	3015	10.24	10.24	10.24
1320	1320	1320	10.24	10.24	1320	1320	10.24	10.24	1320	1320	10.24	10.24	10.24
1089	1089	1089	10.24	10.24	1089	1089	10.24	10.24	1089	1089	10.24	10.24	10.24
713	713	713	10.24	10.24	713	713	10.24	10.24	713	713	10.24	10.24	10.24
400	400	400	10.24	10.24	400	400	10.24	10.24	400	400	10.24	10.24	10.24
150	150	150	10.24	10.24	150	150	10.24	10.24	150	150	10.24	10.24	10.24
300	300	300	10.24	10.24	300	300	10.24	10.24	300	300	10.24	10.24	10.24
300	300	300	10.24	10.24	300	300	10.24	10.24	300	300	10.24	10.24	10.24
0.44	0.44	0.44	10.24	10.24	0.44	0.44	10.24	10.24	0.44	0.44	10.24	10.24	10.24
3015	3015	3015	10.24	10.24	3015	3015	10.24	10.24	3015	3015	10.24	10.24	10.24
1320	1320	1320	10.24	10.24	1320	1320	10.24	10.24	1320	1320	10.24	10.24	10.24
1089	1089	1089	10.24	10.24	1089	1089	10.24	10.24	1089	1089	10.24	10.24	10.24
713	713	713	10.24	10.24	713	713	10.24	10.24	713	713	10.24	10.24	10.24
400	400	400	10.24	10.24	400	400	10.24	10.24	400	400	10.24	10.24	10.24
150	150	150	10.24	10.24	150	150	10.24	10.24	150	150	10.24	10.24	10.24
300	300	300	10.24	10.24	300	300	10.24	10.24	300	300	10.24	10.24	10.24
300	300	300	10.24	10.24	300	300	10.24	10.24	300	300	10.24	10.24	10.24
0.44	0.44	0.44	10.24	10.24	0.44	0.44	10.24	10.24	0.44	0.44	10.24	10.24	10.24
3015	3015	3015	10.24	10.24	3015	3015	10.24	10.24	3015	3015	10.24	10.24	10.24
1320	1320	1320	10.24	10.24	1320	1320	10.24	10.24	1320	1320	10.24	10.24	10.24
1089	1089	1089	10.24	10.24	1089	1089	10.24	10.24	1089	1089	10.24	10.24	10.24
713	713	713	10.24	10.24	713	713	10.24	10.24	713	713	10.24	10.24	10.24
400	400	400	10.24	10.24	400	400	10.24	10.24	400	400	10.24	10.24	10.24
150	150	150	10.24	10.24	150	150	10.24	10.24	150	150	10.24	10.24	10.24
300	300	300	10.24	10.24	300	300	10.24	10.24	300	300	10.24	10.24	10.24
300	300	300	10.24	10.24	300	300	10.24	10.24	300	300	10.24	10.24	10.24
0.44	0.44	0.44	10.24	10.24	0.44	0.44	10.24	10.24	0.44	0.44	10.24	10.24	10.24
3015	3015	3015	10.24	10.24	3015	3015	10.24	10.24	3015	3015	10.24	10.24	10.24
1320	1320	1320	10.24	10.24	1320	1320	10.24	10.24	1320	1320	10.24	10.24	10.24
1089	1089	1089	10.24	10.24	1089	1089	10.24	10.24	1089	1089	10.24	10.24	10.24
713	713	713	10.24	10.24	713	713	10.24	10.24	713	713	10.24	10.24	10.24
400	400	400	10.24	10.24	400	400	10.24	10.24	400	400	10.24	10.24	10.24
150	150	150	10.24	10.24	150	150	10.24	10.24	150	150	10.24	10.24	10.24
300	300	300	10.24	10.24	300	300	10.24	10.24	300	300	10.24	10.24	10.24
300	300	300	10.24										

SURVEY No.

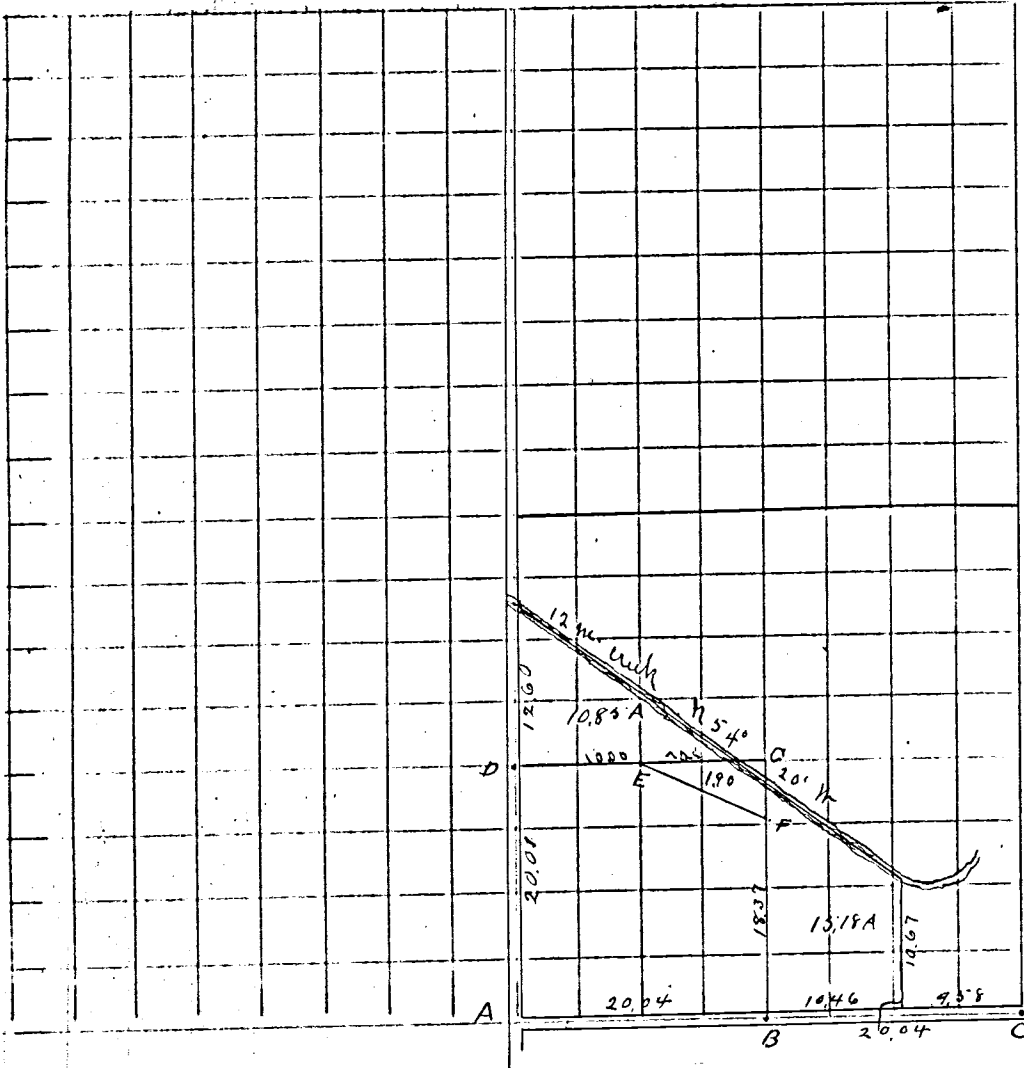
In Town *4* of Range *3* East. Plat and Notes of Survey made by me on the

25 day of *March*, A. D. *1801*, in Sec. *32*, Town *4*, of Range *3*, at the instance of

C. B. Collins and Jas. Cook

BK 2

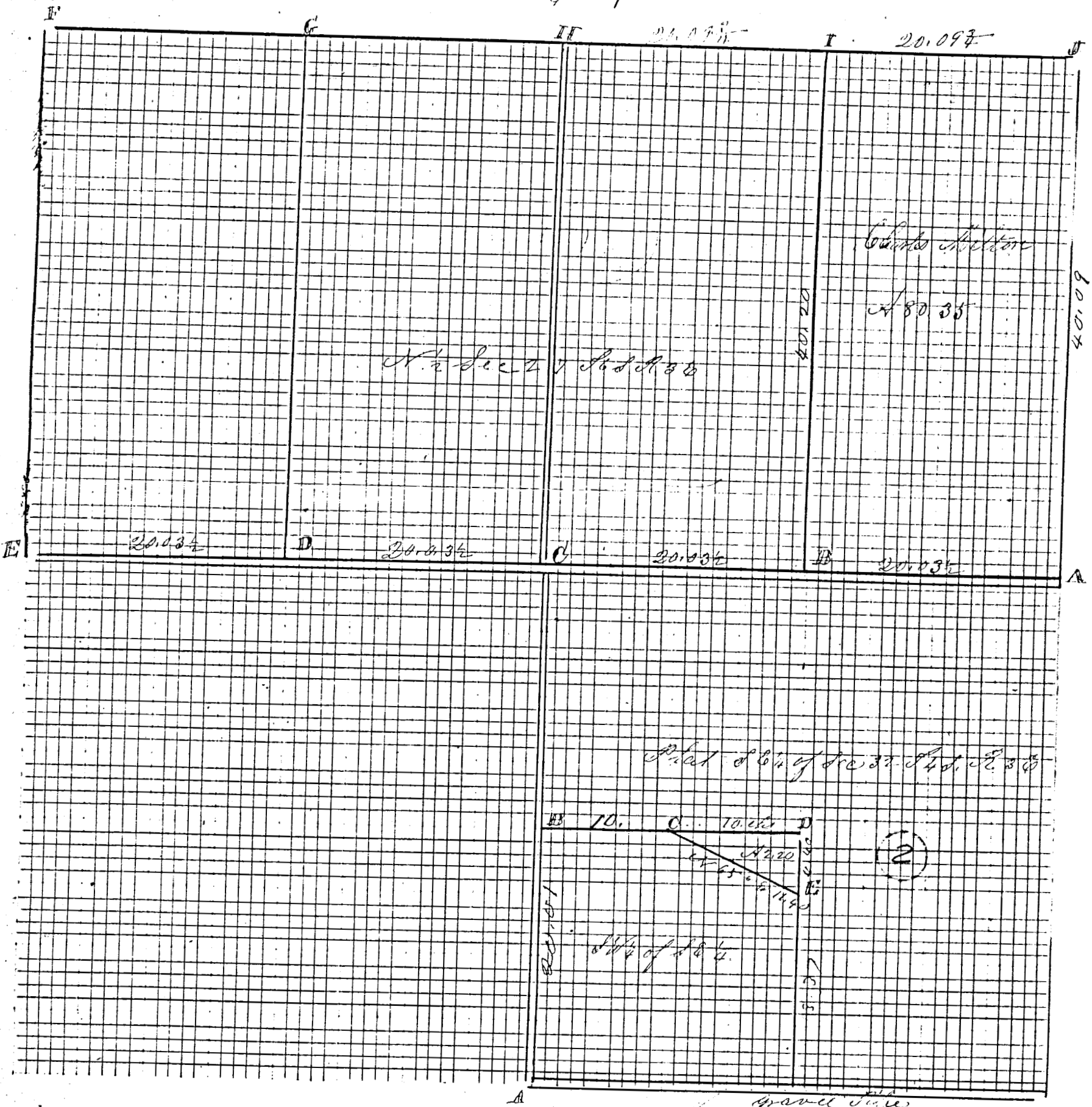
CONDITION OF ORIGINAL CORNERS.



CORNERS DESCRIBED.	BEARING TREES.	D.	Course.	Dist.	BEARING TREES.	D.	Course.	Dist.
A Lime Stone 20-12-6-45 links west of stone for Center Township								
B Stake lime stone 14-8-8 on equa. division line A-C	Betula Cherry 10 NE 64 1/2 links							
C Stone deep on top of which placed pyramidal lime stone 10 top of stake and 45 links west of stone at NE cor of section 5 Center Township								
D, E, F, G, stones established by M Schuyler in 1871 and Recorded in Book No 2 Page 262								
<p>I certify that I believe the above survey and record to be correct.</p> <p><i>W. H. Ashbaugh</i> Co Sur</p>								

MERCER COUNTY.

Surveyed



F 20.097 G 20.097 H 20.097 I 20.097

E 20.034 D 20.034 C 20.034 B 20.034 A

401.09

Cyrus B. Collins
A 80.35

1/2 Sect 27 S. 28. N. 28. W.

401.20

Plat of 1/4 of Sec 32 S. 28. N. 28. W.

B 10. C 10.25 D

A 2.20
14.22
10.25
10.

1/4 of 184.

(2)

1891

1891

Grand Jury
Anderson

ROAD RECORD

Sec 27 T6S R3E Franklin Township

Plat and notes of Survey made by me on the 17th day of December 1890 in Sec 27 T6S R3E East at the Instance of Charles Burage and Charles Milton the Top of the Plat being north survey in the North 1/2 of Section Stone by me in Survey of Sec 26 in 1870

Stone 14. 8. 6 White Ash 18 39 E 7 1/2 Elm 2 N 68 1/2 E 95 (was 20 in 20)

B Stone Stone Witness

C and D Stakes

E Stone 19. 12. 8 by me in Road Survey in April 11th AD 1883

Stone Witnesses N 45 W 50 hick White Oak 118 46 E 70 1/2 L

F Stone at N W corner of Sec 27 to and H to notes

G Stone west of Stone 14. 12. 6 inches Swamp Sound W Oak 48 64

H Stone by me in former survey Dec 18th 1872

Red Oak 18 N 40 3/4 E Beech 18 S 61 1/2 W 79

I Sts and Stone 16. 8. 7 Burr Oak 14 N 35 W 61 1/2

Copied by me from note book 23 Page 57 this day and is correct to the best of my knowledge & belief
Celina Murch Co. O. Aug 30th 1892 Marcus Schuyler sur

Comp

2

Plat and notes of Survey made by me on the 22nd day of April 1891 in the SW 1/4 of the SE 1/4 of Sec 32 T4S R3E at the Instance of Cyrus B Collins and Thomas M. Kelley

The Top of the Plat being north

A 1/4 P found Planted Lime Stone 20. 12. 6

B Stake tile & Lime Stone 16. 8. 5 in Road on road center line

C Lime Stone 14. 10. 3 Sweet Oak 30 N 40 1/2 E 61 L

D Lime Stone 8. 6. 5 Elm 13 S 37 1/2 W 8 1/2 L Elm 18 N 67 W 41 3/4

E Stake Boulder 18. 12. 6 B Walnut 24 S 32 1/2 E 192

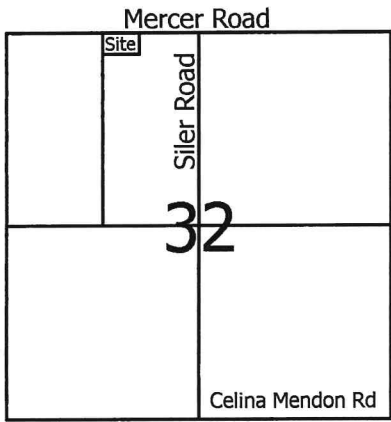
The foregoing notes of Survey by me are correct

M Schuyler sur

Copied from note Book 23 Page 63 by me this 30th day of August 1892 and is correct to the best of my knowledge & belief

Marcus Schuyler sur

Compared Mar 4th 1893

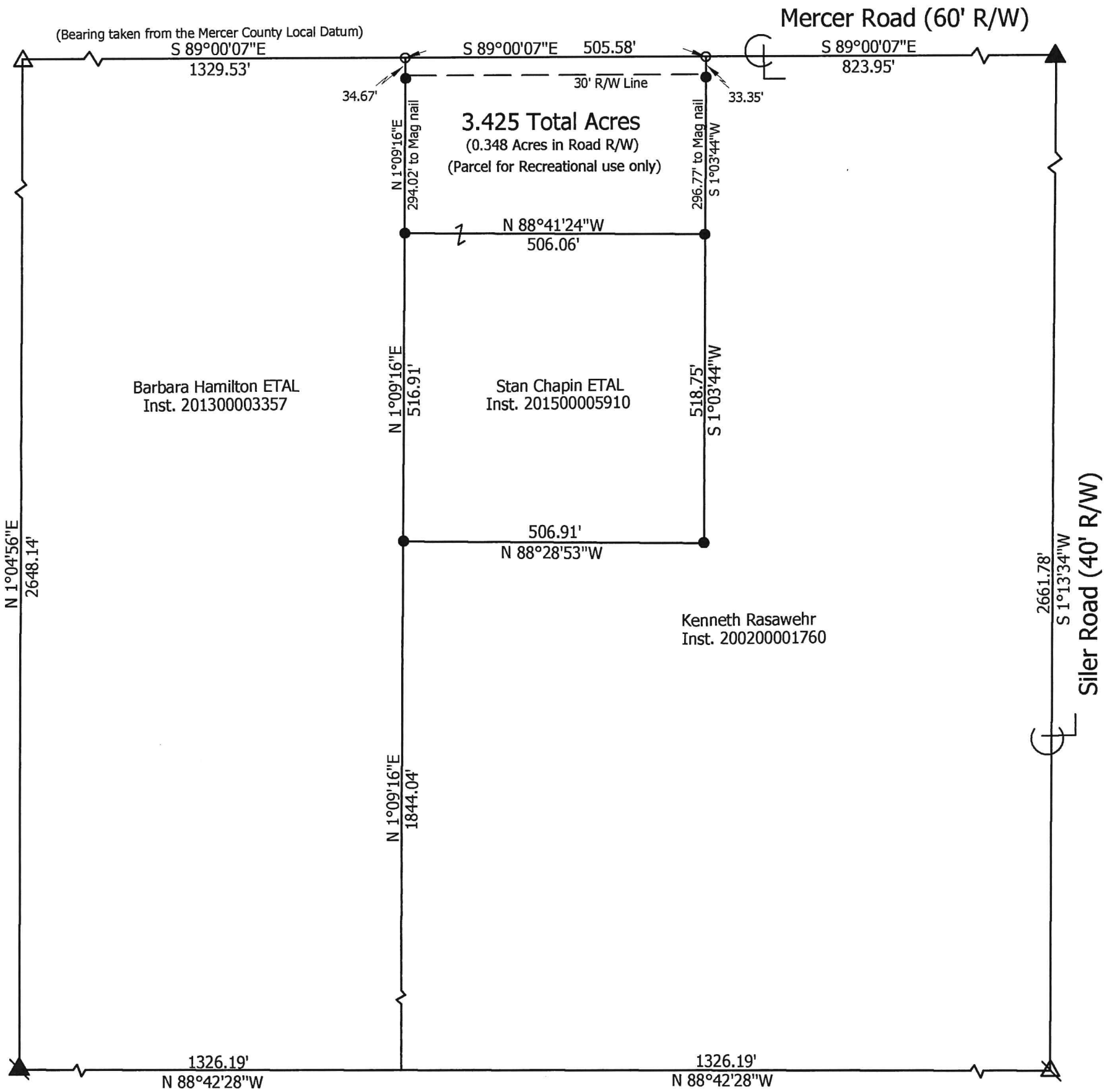


Scale: 1" = 200'



Legend:

- △ Monument Box @ the NW corner of Section 32
- ▲ Monument Box @ the N1/4 Post of Section 32
- ⊠ Cornerstone @ the center of Section 32
- ▲ Iron pin w/cap set on angle over a Cornerstone found @ the W1/4 post of Section 32
- 5/8" X 30" Iron pin w/cap set
- Mag nail set



Marbaugh
Land Surveying

1901 Carolina Court
Celina, Ohio 45822
(419) 586-4293

Kent Marbaugh
Kent B. Marbaugh P.S. 7421



Rasawehr to Chapin Survey

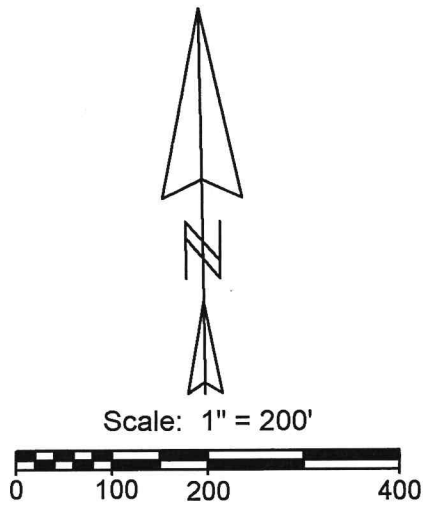
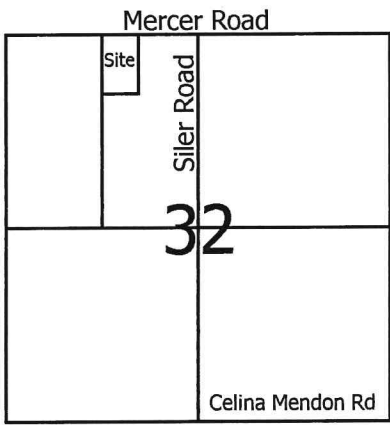
State of: Ohio County: Mercer

Township: Union Sec: 32 NW 1/4 Town: 4S Range: 3E

City/Village: _____ Subdivision: _____ Lot: _____

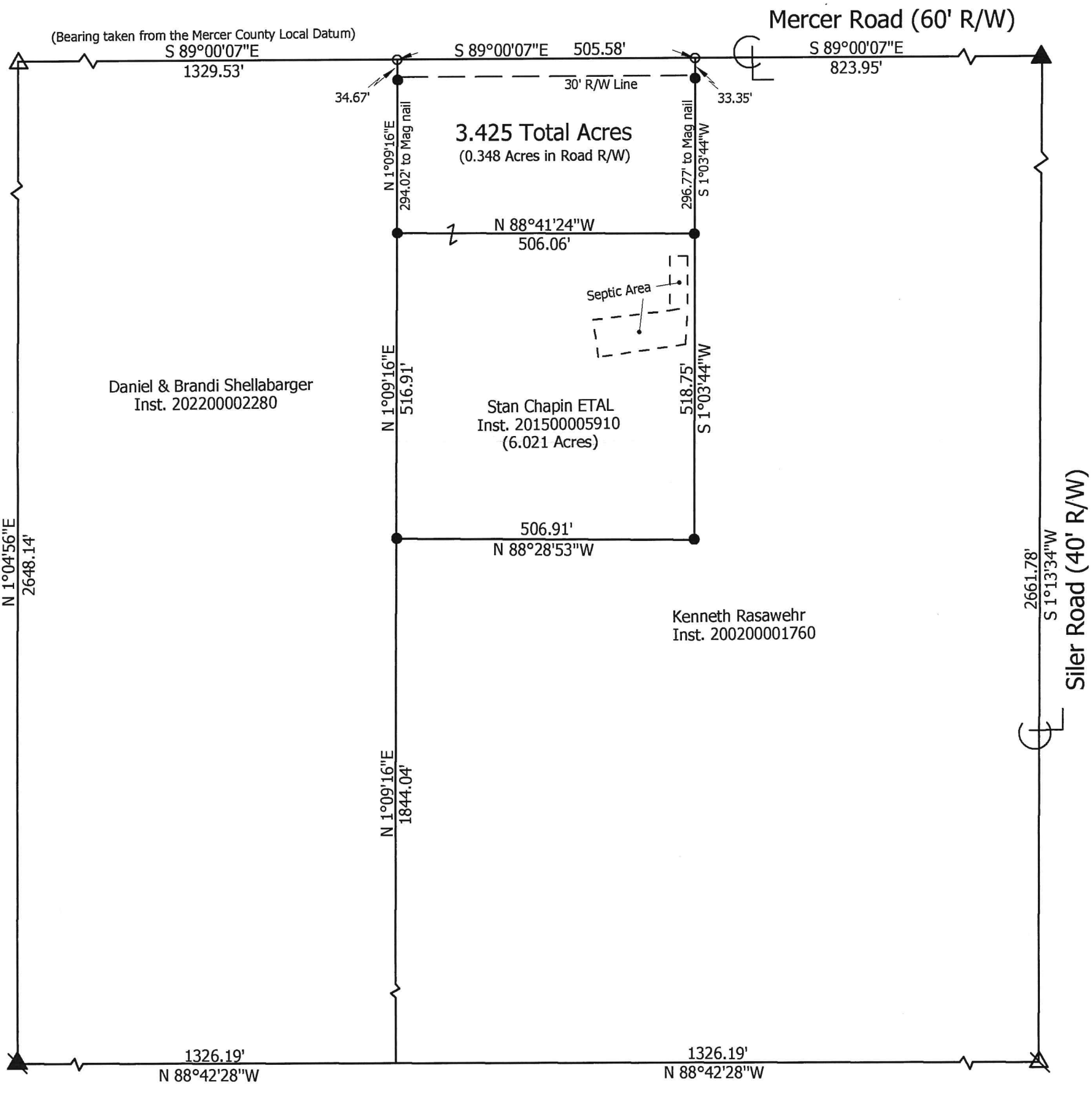
Deed References: Inst. 200200001760 Date Surveyed: 10-14-20

Approvals: _____	_____	_____
Agency: <u>Board of Health</u>	Township Zoning Inspector	County Engineer
Date: _____		



- Legend:**
- △ Monument Box @ the NW corner of Section 32
 - ▲ Monument Box @ the N1/4 Post of Section 32
 - ⊠ Cornerstone @ the center of Section 32
 - ▲ Iron pin w/cap set on angle over a Cornerstone found @ the W1/4 post of Section 32
 - 5/8" X 30" Iron pin w/cap set
 - Mag nail set

** Tracts not approved by county
J. Weiss 11/17/22*



Marbaugh Land Surveying

1901 Carolina Court
Celina, Ohio 45822
(419) 586-4293

Kent Marbaugh
Kent B. Marbaugh P.S. 7421



Stan & Rhonda Chapin Survey (6668 Mercer Road)

State of: Ohio County: Mercer

Township: Union Sec: 32 Town: 4S Range: 3E

City/Village: _____ Subdivision: _____ Lot: _____

Deed References: Inst. 202000007376 Date Surveyed: 9-22-22

Approvals:		
Agency:	<u>Board of Health</u>	<u>Township Zoning Inspector</u>
Date:		<u>County Engineer</u>

NOTE: THE BEARINGS CONTAINED HEREIN ARE BASED ON GPS OBSERVATIONS USING O.D.O.T. CORS NETWORK STATIONS, CONVERTED TO THE OHIO STATE PLANE NORTH ZONE, HORIZONTAL DATUM NAD83 (2011).

N.W. COR. - SEC. 32

1329.43'

DANIEL & BRANDI SHALLABARGER
20.971 AC. (DEED) (TRACT TWO)
INST. # 2022-2280

CHAPIN SURVEY

PART OF THE E. 1/2 - N.W. 1/4 - SEC. 32, TOWN 4 SOUTH, RANGE 3 EAST, UNION TOWNSHIP, MERCER COUNTY, OHIO.



1" = 100'

TRACT THREE
0.135 ACRE
(0.014 AC. IN R/W)

SURVEY REFERENCES:

- 1) RASAWEHR TO CHAPIN SURVEY BY K. MARBAUGH, P.S. 7421, 10-14-20.
- 2) RASAWEHR SURVEY BY K. MARBAUGH, P.S. 7421, 10-10-15.
- 3) PRIOR SURVEY FOR HAMILTON, MARCH 29, 2022.

NOTES:

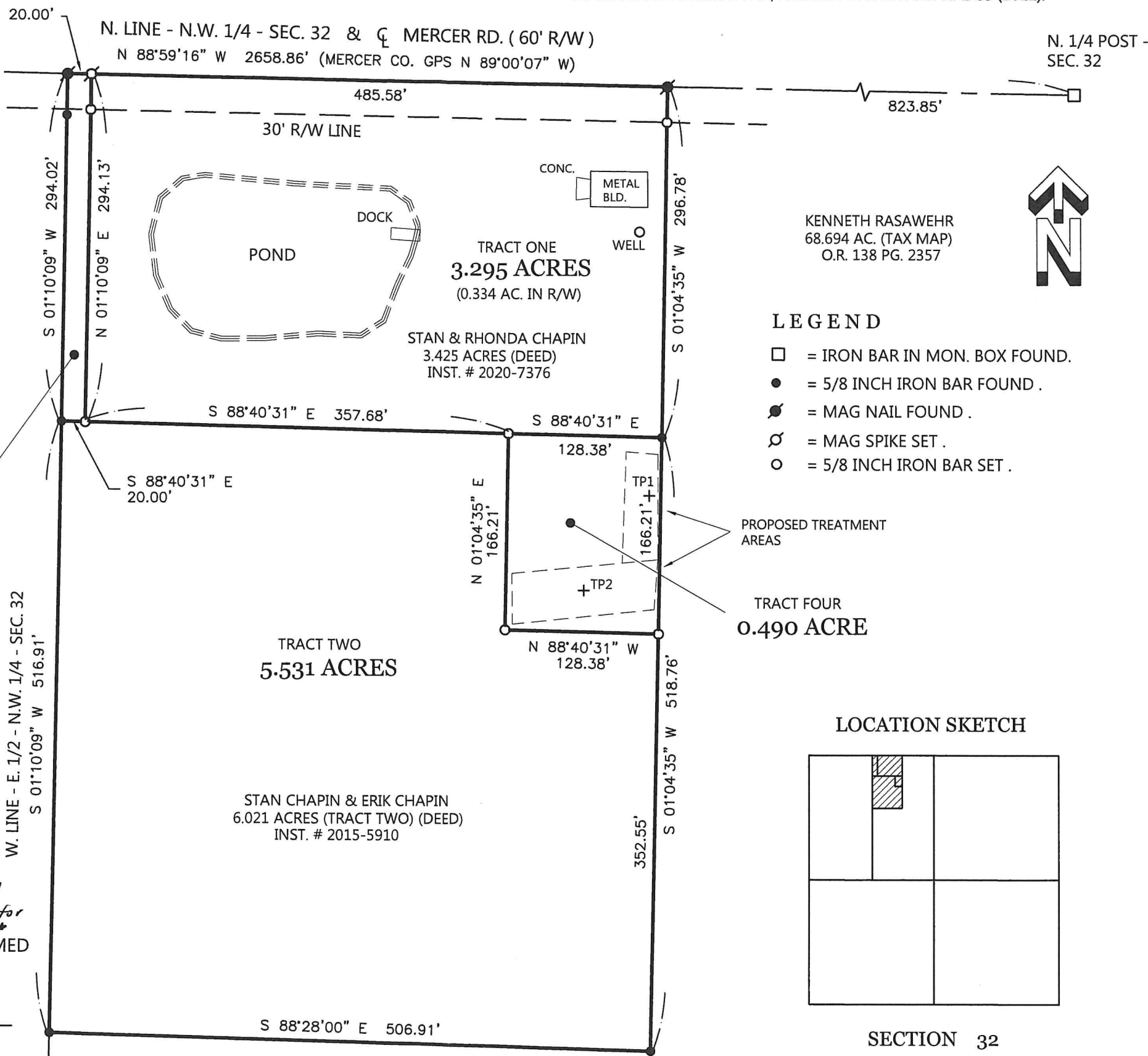
- 1) TRACT THREE IS AN ADD ON PARCEL TO STAN CHAPIN & ERIK CHAIPIN'S 6.021 ACRE PARCEL.
- 2) TRACT FOUR IS AN ADD ON PARCEL TO STAN & RHONDA CHAPIN'S 3.425 ACRE PARCEL.
- 3) REFER TO THE SOIL EVALUATION BY M. DEATON, 9/7/22. ON FILE IN THE HEALTH DEPARTMENT.

** Taxmap Note: variance for irregular lot (Tract One) denied at 12/14/22 Regional Planning Commission meeting. Legal descriptions not approved for conveyance. **

THIS PLAT REPRESENTS AN ACTUAL FIELD SURVEY PERFORMED UNDER MY SUPERVISION DATED November 11, 2022.

James W. Geeslin

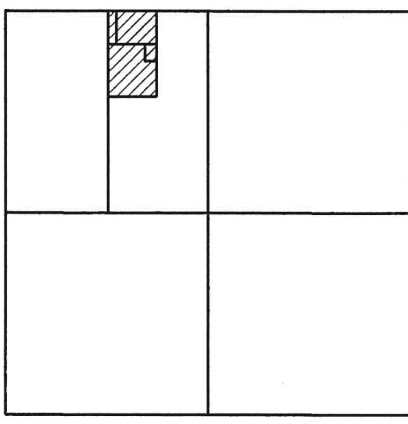
ATTEST: JAMES W. GEESLIN
PROFESSIONAL SURVEYOR 7764



LEGEND

- = IRON BAR IN MON. BOX FOUND.
- = 5/8 INCH IRON BAR FOUND.
- ⊙ = MAG NAIL FOUND.
- ⊕ = MAG SPIKE SET.
- = 5/8 INCH IRON BAR SET.

LOCATION SKETCH



SECTION 32

PERMANENT PARCEL No.	Part of: _____	Sec. _____	T. _____	R. _____	Township _____
	Grantor: _____	Area Retained _____	Acres _____	Grantee: _____	Area Retained _____
	Deed Reference: _____	APPROVALS: _____	AGENCY: _____	DATE: _____	Township Zoning Officer _____
					Mercer County Engineer _____



GEESLIN SURVEYING

525 S. SECOND ST.
COLDWATER, OHIO 45828
Phone : (419) 678 - 7233
Email : geeslinsurveying@gmail.com

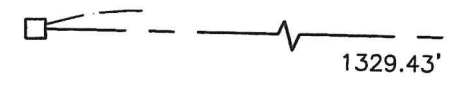
PAID

JAN 26 2023

MERCER COUNTY COMMISSIONERS
CELINA, OHIO

NOTE: THE BEARINGS CONTAINED HEREIN ARE BASED ON GPS OBSERVATIONS USING O.D.O.T. CORS NETWORK STATIONS, CONVERTED TO THE OHIO STATE PLANE NORTH ZONE, HORIZONTAL DATUM NAD83 (2011).

N.W. COR. - SEC. 32

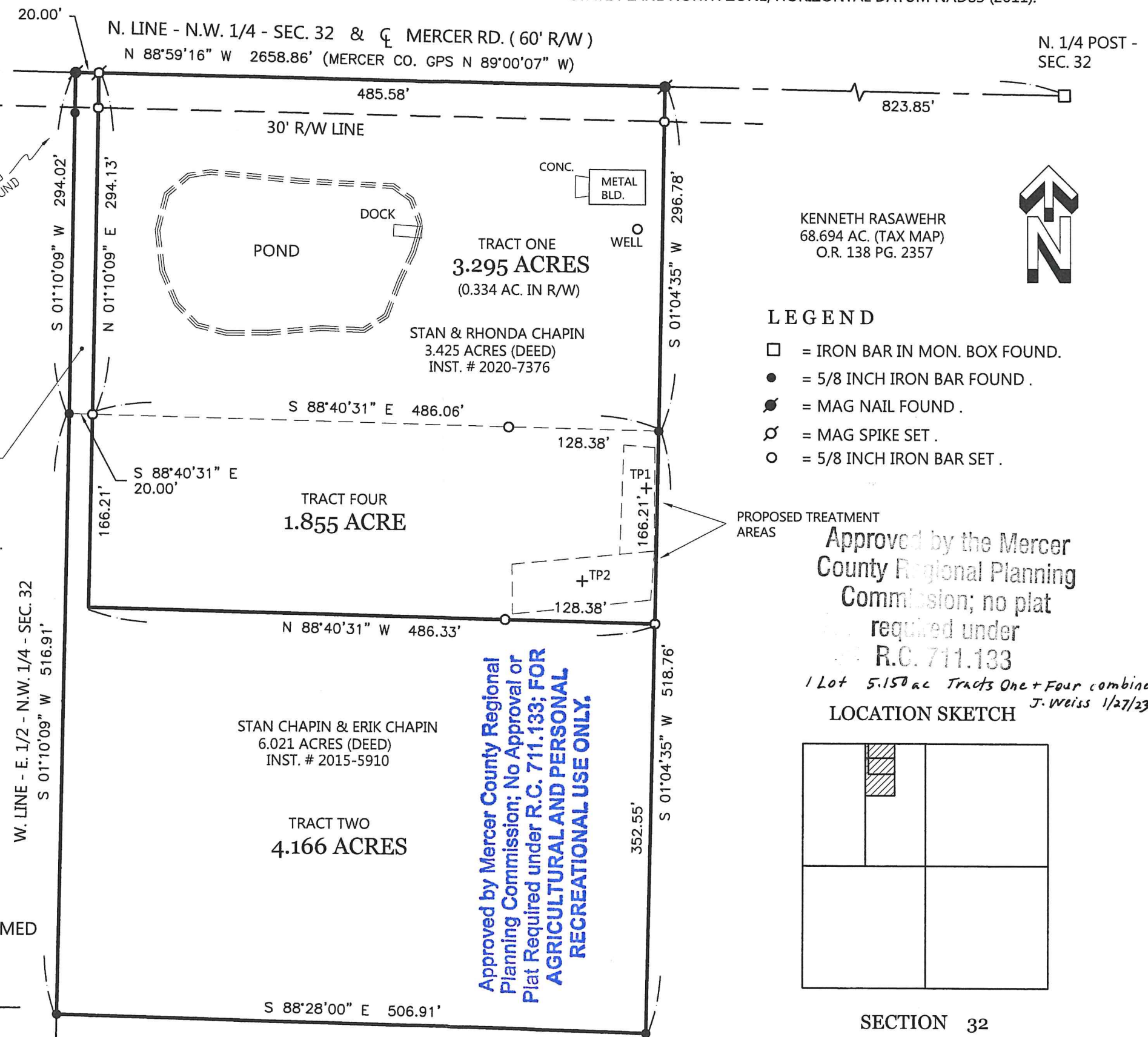


DANIEL & BRANDI SHALLABARGER
20.971 AC. (DEED) (TRACT TWO)
INST. # 2022-2280

CHAPIN SURVEY

PART OF THE E. 1/2 - N.W. 1/4 - SEC. 32, TOWN 4 SOUTH, RANGE 3 EAST, UNION TOWNSHIP, MERCER COUNTY, OHIO.

34.67' TO BAR FOUND



KENNETH RASAWEHR
68.694 AC. (TAX MAP)
O.R. 138 PG. 2357

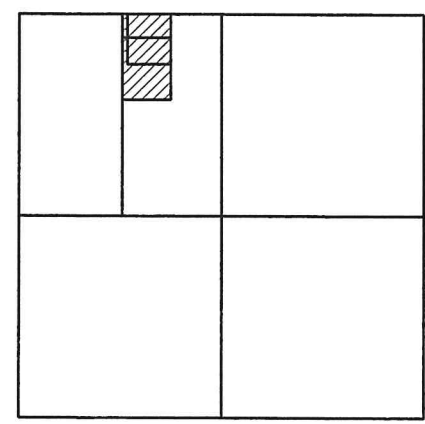
LEGEND

- ☐ = IRON BAR IN MON. BOX FOUND.
- = 5/8 INCH IRON BAR FOUND.
- ⊙ = MAG NAIL FOUND.
- ⊗ = MAG SPIKE SET.
- = 5/8 INCH IRON BAR SET.

PROPOSED TREATMENT AREAS

Approved by the Mercer County Regional Planning Commission; no plat required under R.C. 711.133

1 Lot 5.150 ac Tracts One + Four combined
J. Weiss 1/27/23



SECTION 32

SURVEY REFERENCES:

- 1) RASAWEHR TO CHAPIN SURVEY BY K. MARBAUGH, P.S. 7421, 10-14-20.
- 2) RASAWEHR SURVEY BY K. MARBAUGH, P.S. 7421, 10-10-15.
- 3) PRIOR SURVEY FOR HAMILTON, MARCH 29, 2022.

NOTES:

- 1) TRACT THREE IS AN ADD ON PARCEL TO STAN CHAPIN & ERIK CHAPIN'S 6.021 ACRE PARCEL.
- 2) TRACT FOUR IS AN ADD ON PARCEL TO STAN & RHONDA CHAPIN'S 3.425 ACRE PARCEL.
- 3) REFER TO THE SOIL EVALUATION BY M. DEATON, 9/7/22. ON FILE IN THE HEALTH DEPARTMENT.

THIS PLAT REPRESENTS AN ACTUAL FIELD SURVEY PERFORMED UNDER MY SUPERVISION DATED JANUARY 9, 2023.

James W. Geeslin

ATTEST: JAMES W. GEESLIN
PROFESSIONAL SURVEYOR 7764

TRACT ONE
3.295 ACRES
(0.334 AC. IN R/W)

STAN & RHONDA CHAPIN
3.425 ACRES (DEED)
INST. # 2020-7376

TRACT THREE
0.135 ACRE
(0.014 AC. IN R/W)

TRACT FOUR
1.855 ACRE

STAN CHAPIN & ERIK CHAPIN
6.021 ACRES (DEED)
INST. # 2015-5910

TRACT TWO
4.166 ACRES

Approved by Mercer County Regional Planning Commission; No Approval or Plat Required under R.C. 711.133; FOR AGRICULTURAL AND PERSONAL RECREATIONAL USE ONLY.

PERMANENT PARCEL No.	Part of: _____	Sec. _____	T. _____	R. _____	Township _____
	Grantor: _____	Area Retained _____		Acres _____	
	Grantee: _____	Area Retained _____		Acres _____	
Deed Reference:	_____				
APPROVALS:	_____				
AGENCY:	Board of Health				
DATE:	1-26-23				



GEESLIN SURVEYING

525 S. SECOND ST.
COLDWATER, OHIO 45828

Phone: (419) 678-7233
Email: geeslinsurveying@gmail.com

James W. Geeslin
Mercer County Engineer
1-25-23

N.W. COR.-
SEC. 32

N. LINE - N.W. 1/4 - SEC. 32 & Q MERCER RD. (60' R/W)
S 88°59'16" E 2658.86' (MERCER CO. GPS S 89°00'07" E)

N. 1/4 POST-
SEC. 32

W. LINE - N.W. 1/4 - SEC. 32
N 01°05'54" E 2648.04'

LEGEND

- = WOOD END POST FOUND.
- △ = 5/8" BAR OVER STONE FOUND.
- = IRON BAR IN MON. BOX FOUND.
- = 5/8" IRON BAR FOUND.
- ⊙ = MAG NAIL FOUND.
- ⊗ = MAG SPIKE SET.
- = 5/8" IRON BAR SET.

TRACT ONE
45.551 ACRES
(0.231 AC. IN R/W)

BARBARA HAMILTON ETAL
76.223 AC. (TAX MAP)
INST. # 2013-3357

TRACT TWO
20.971 ACRES
(0.337 AC. IN R/W)

Approved by Mercer County Regional
Planning Commission; No Approval or
Plat Required under R.C. 711.133; FOR
AGRICULTURAL AND PERSONAL
RECREATIONAL USE ONLY.

"Tract 4" J. Weiss 4/11/22

TRACT FOUR
8.321 ACRES
(0.010 AC. IN R/W)

**TRACT FOUR IS DESIGNATED "FOR REC-
REATIONAL USE ONLY**

MINOR SUBDIVISION
1 Lot "Tract 3" J. Weiss 4/11/22

TRACT THREE
2.200 ACRES
(0.200 AC. IN R/W)

RHONDA & STAN CHAPIN
9.446 AC. (DEEDS)
INST. # 2015-5910 & 2020-7376



NOTES

- 1) REFERENCE TO SURVEYS BY K. MARBAUGH, P.S. 7421, DATED 8-26-05 & 10-14-20.
- 2) REFERENCE TO SOIL EVALUATION BY F. GIBBS, 3/17/22. ON FILE IN HEALTH DEPT.

KENNETH RASAWEHR
68.694 AC. (TAX MAP)
O.R. 138 PG. 2357

THIS PLAT REPRESENTS AN ACTUAL FIELD SURVEY PERFORMED
UNDER MY SUPERVISION, AS DATED MARCH 29, 2022

James W. Geeslin
JAMES W. GEESLIN
PROFESSIONAL SURVEYOR 7764

NOTE: THE BEARINGS CONTAINED HEREIN ARE BASED ON GPS OBSERVATIONS
USING O.D.O.T. CORS NETWORK STATIONS, CONVERTED TO THE OHIO
STATE PLANE NORTH ZONE, HORIZONTAL DATUM NAD83 (2011).

HAMILTON SURVEY

PART - W. 1/2 - N.W. 1/4 - SEC. 32, TOWN 4 SOUTH, RANGE 3 EAST,
(UNION TOWNSHIP), MERCER COUNTY, OHIO.



SCALE 1" = 200'

RECEIVED

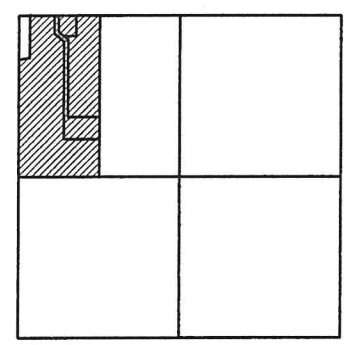
PAID

APR 08 2022

APR 08 2022

MERCER CO. HEALTH DISTRICT

LOCATION SKETCH



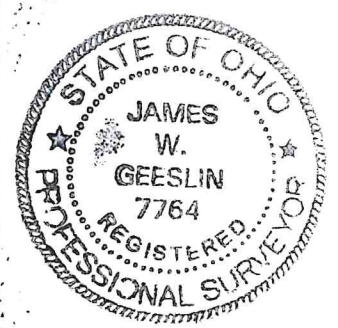
SECTION 32

CENTER-
SEC. 32

GEESLIN SURVEYING

525 S. SECOND ST.
COLDWATER, OHIO 45828

Phone : (419) 678 - 7233
Email : geeslinsurveying@gmail.com



PERMANENT PARCEL No. _____

Part of: _____ Sec. _____ T. _____ R. _____ Township _____

Grantor: _____ Area Retained _____ Acres

Grantee: _____ Area Retained _____ Acres

Deed Reference: _____

APPROVALS: _____
AGENCY: Board of Health Township Zoning Officer Mercer County Engineer
DATE: 4-8-22 4-8-2022