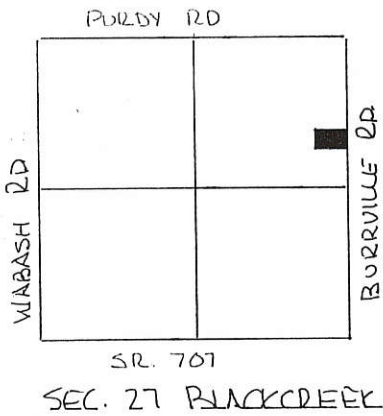


PETTIBONE SURVEY
 PART NE 1/4, SEC. 27, T4S, R1E, BLACKCREEK TWP.
 MERCER CO., OHIO

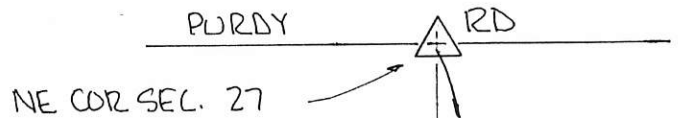
01-H

01-27-200-002



LEGEND:

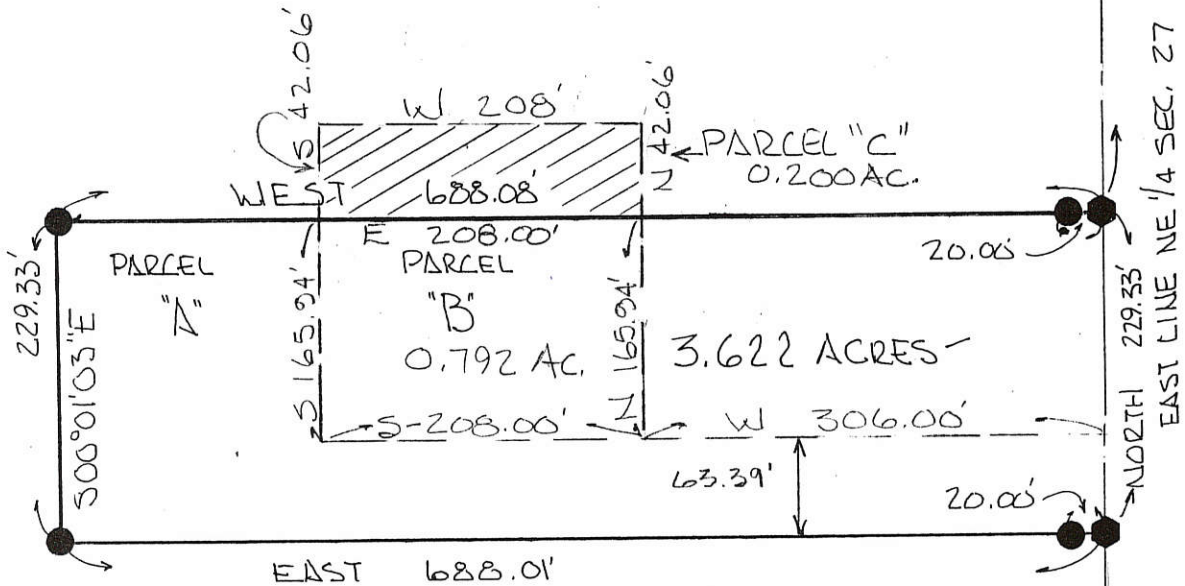
- △ STONE REF.
- NAIL SET
- IRON PIN SET.



DEED REF:

PARCEL "A" MAPLE PETTIBONE VOL 334 PG 656
 PARCEL "B" ROBERT & JULIE PETTIBONE OR 14 PG 396

PARCELS NOT IN FLOOD PLANE
 FIRM PANEL No. 390392 0025 B
 SEPT 6, 1989-



PLAT BY SURVEY NOV. 1997

Roy F. Thompson Jr.
 ROY F. THOMPSON JR. REG. SUR. # 5379



SE COR NE 1/4 SEC. 27 → ●

0127200003

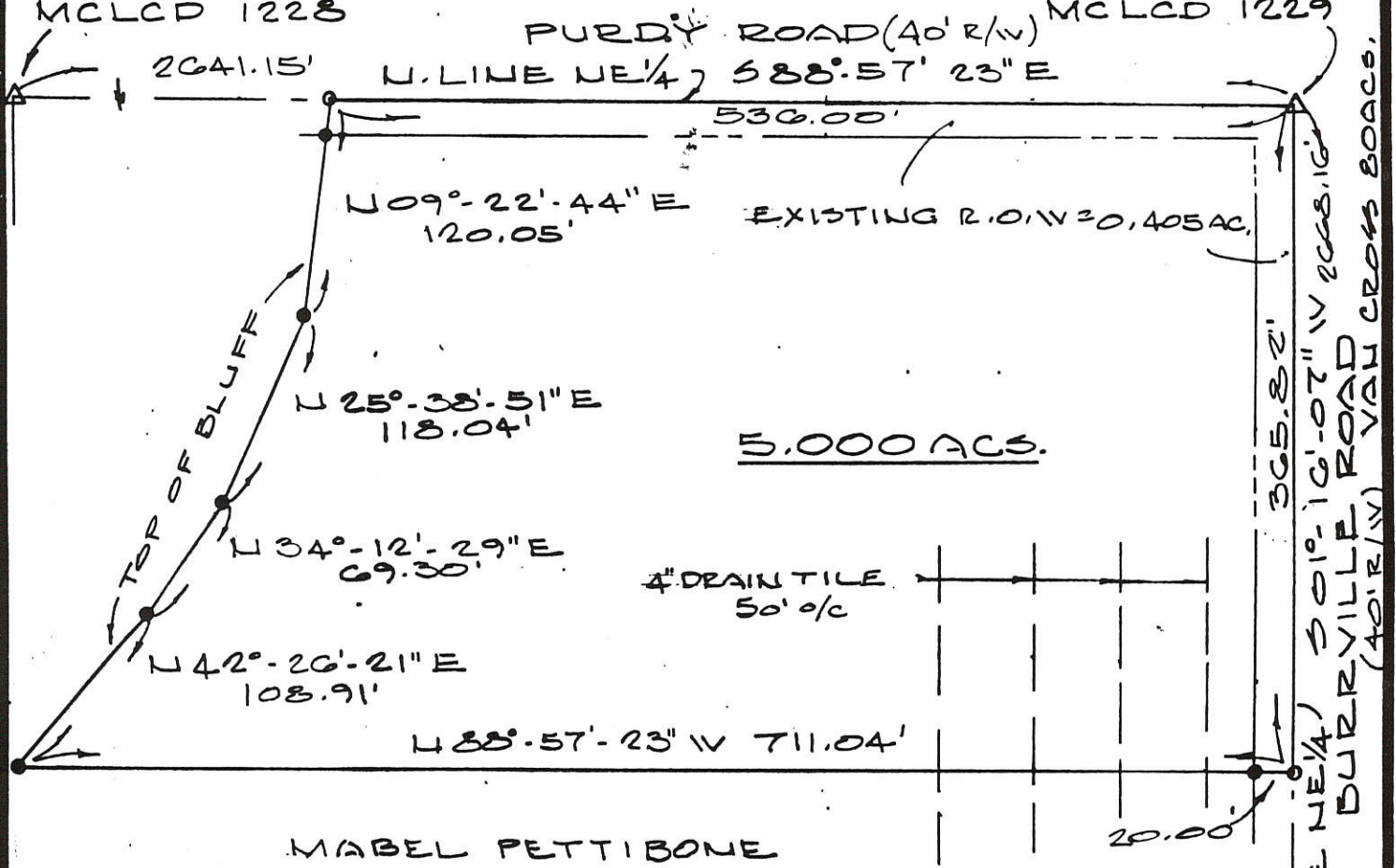
VAN CROSS 40 ACS.

01-H
01-27-200-003

PLAT OF SURVEY

IRON PIPE
NW COR. NE 1/4
MCLCD 1228

NAIL
NE COR NE 1/4
MCLCD 1229



Permanent Parcel No. 03-44-00.0000

Grantor: Mable Pettibone

Area Retained 151.4 Acres

Grantee: Kevin Anspaugh

Area Transferred 5.00 Acres

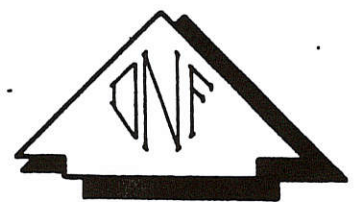
APPROVALS:

_____ Board of Health

_____ County Engineer

_____ Zoning Officer

STONE & R.R. SPK.
SE COR. NE 1/4



LEGEND

- MAG NAIL SET
- 3/8" φ REBAR & CAP SET



SCALE IN FEET

Deed Book 2024 Page 126 MERCER Co. Recorder's Office

Bearings shown hereon are to an assumed meridian and are to denote angles only.

PART OF NE 1/4 OF SECTION 27, T-4-S, R-1-E,
BLACK CREEK TOWNSHIP, MERCER COUNTY, OHIO

DATE OF SURVEY: 08/06/2003

THIS SURVEY WAS MADE AT THE
REQUEST OF:

KEVIN ANSPAUGH

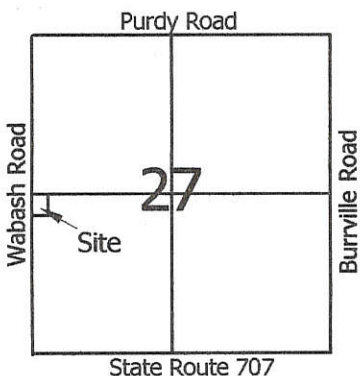


DATED THIS 6TH DAY

OF AUG, 2003.

Don N. Friemoth
DON N. FRIEMOTH, P.S.
REG. PROF. SURVEYOR #4981
10637 MENDON ROAD
VAN WERT, OHIO 45891

0127300004



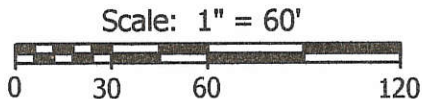
Legend:

- ▲ Cornerstone @ the W1/4 post of Section 27
- △ Cornerstone @ the NW corner of Section 27
- Monument Box @ the SW corner of Section 27
- Mag nail set
- 5/8" X 30" Iron pin w/cap set

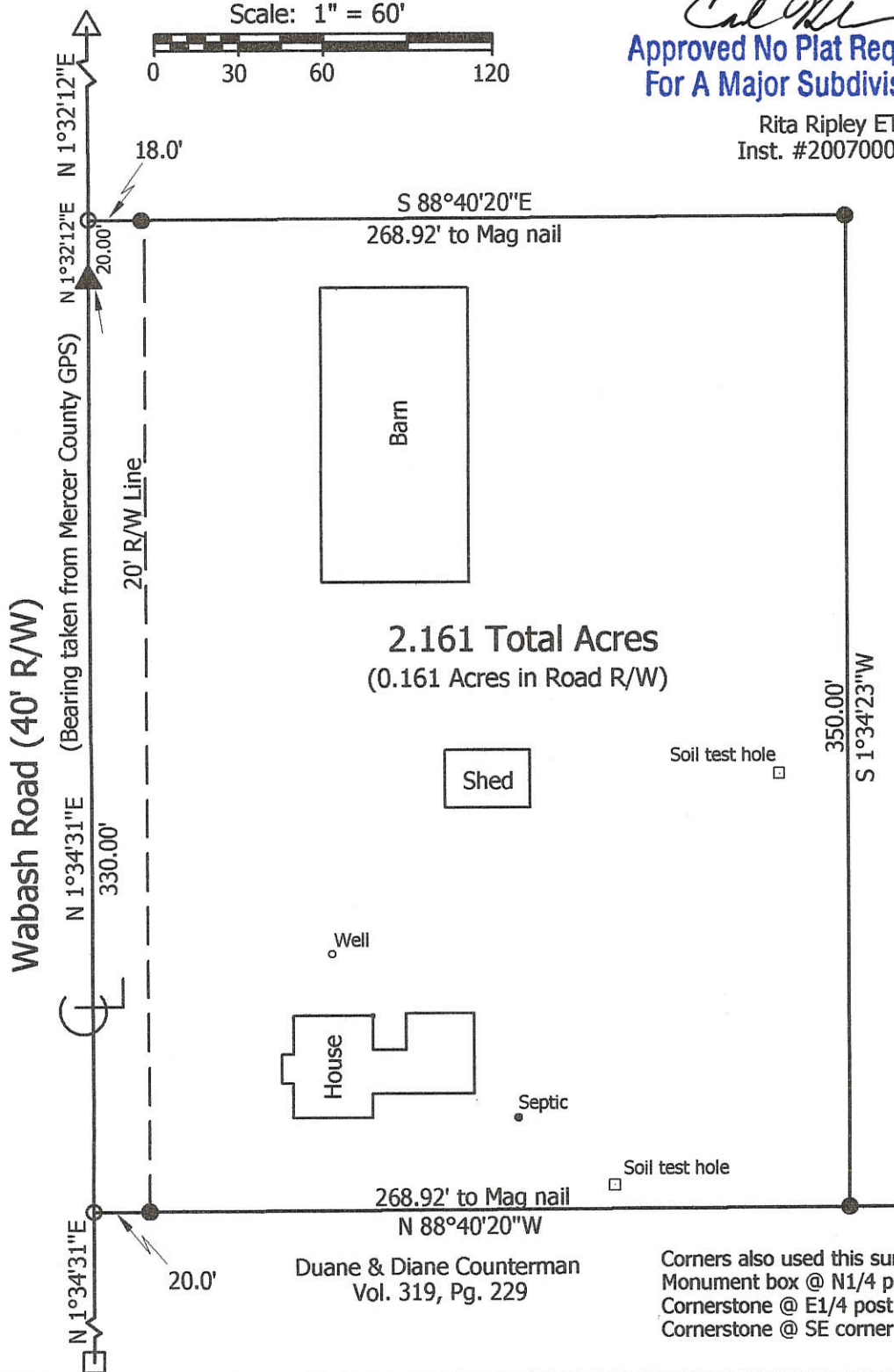
MINOR SUBDIVISION

Cal M
**Approved No Plat Required
 For A Major Subdivision**

Rita Ripley ETAL
 Inst. #200700005947



Note: Based on the attached soil test results, an on-site soil based septic system would not be feasible under the current regulations. An Ohio EPA permitted discharging septic system would be necessary when the current septic system needs replaced. The replacement area that has been tested shall remain undisturbed as future changes in the regulations or technological advancements may allow for a soil based system to be used.



**Marbaugh
 Land Surveying**

1901 Carolina Court
 Celina, Ohio 45822
 (419) 586-4293

Kent Marbaugh
 Kent B. Marbaugh P.S.7421



Rita Ripley ETAL Survey

10722 Wabash Road

State of: Ohio County: Mercer
 Township: Blackcreek Sec: 27 Town: 4S Range: 1E
 City/Village: _____ Subdivision: _____ Lot: _____
 Deed Ref: Inst. #200700005947 Date Surveyed: 2-10-08

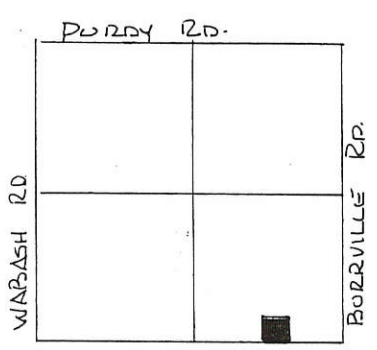
Approvals: *Cal M* *Dennis Hart* *Vernon Eickler*
 Agency: Board of Health Township Zoning Inspector County Engineer
 Date: 9-2-08 5-12-08 8-29-08

01-H(27)

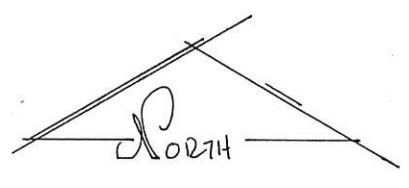
01-H

BOLLENBACHER SURVEY PART SE 1/4, SEC. 27, T4S, R1E, BLACKCREEK TWP. MERCER COUNTY, OHIO

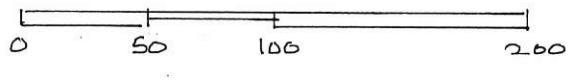
0127400002



SR 707
SEC. 27 BLACKCREEK TWP.



SCALE 1" = 60'

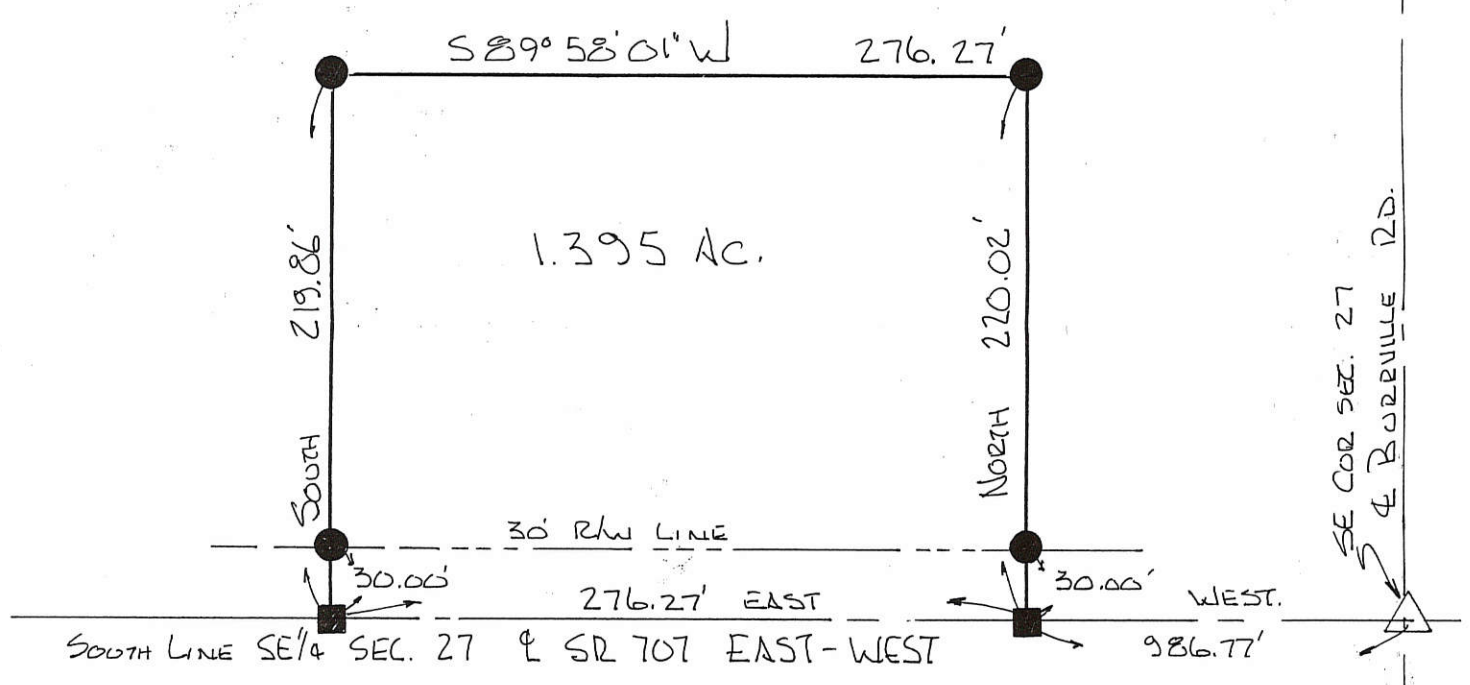


LEGEND

- △ STONE REF.
- NAIL SET
- IRON PIN SET

DEED REFERENCES:

- VOL 253 PG. 334
- VOL 267 PG. 226
- VOL 290 PG. 328



BEARINGS TURNED FROM SOUTH LINE
SE 1/4 SEC. 27 & SR 707 ASSUMED EAST-WEST.

PLAT BY SURVEY DEC. 1998

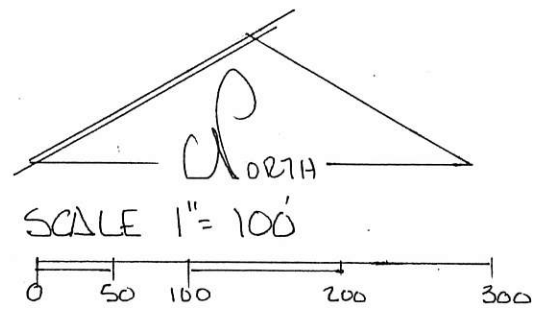
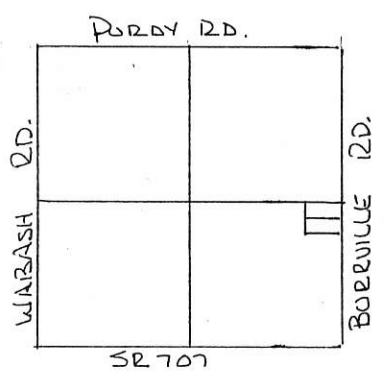
Roy F. Thompson, Jr.
 ROY F. THOMPSON, JR. REG. SUR # 537A.



PERMANENT PARCEL No. _____	
Part of: <u>SE 1/4</u> Sec <u>27</u> T <u>4S</u> R <u>1E</u> <u>Blackcreek</u> Township	
Grantor: <u>Bollenbacher</u>	Area Retained: _____ Acres
Grantee: _____	Area Transferred: <u>1.395</u> Acres
Deed References: <u>V 253 P 334, V 267 P 226, V 290 P 328</u>	
APPROVALS:	
AGENCY: Board of Health	Co. Sanitary Engineer: <u>John A. Ellinger</u>
DATE: _____	County Engineer: _____ 12-7-98

BOLLENBACHER SURVEY
PART SE 1/4, SEC. 27, T 4 S, R 1 E, BLACKCREEK TWP.
MERCER COUNTY, OHIO

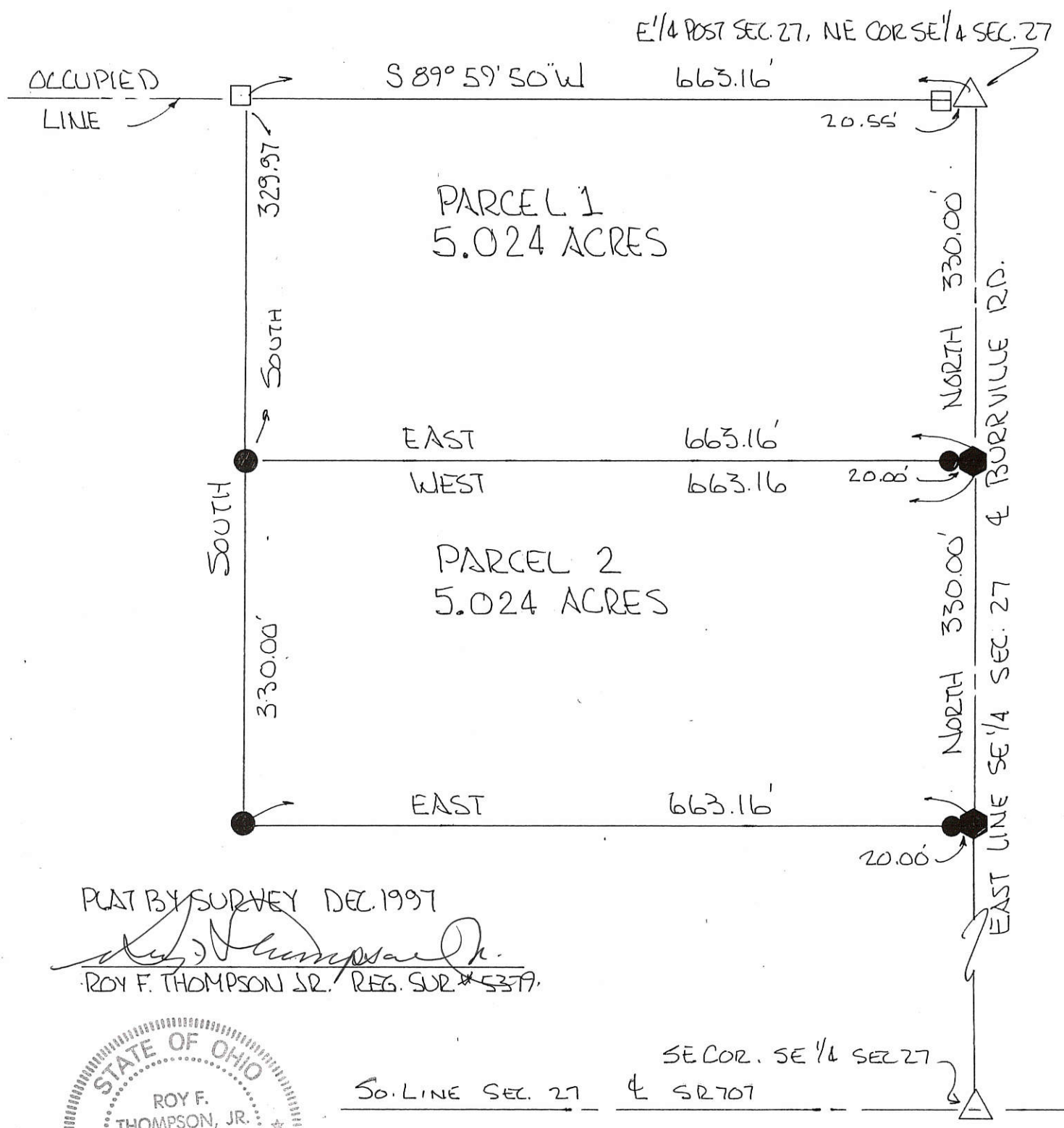
01-27-400-003
01-27-400-004



- LEGEND
- △ STONE REF
 - EXIST. COR. POST
 - NAIL SET
 - IRON PIN SET.

DEED REF VOL 290 PG 328

SEC. 27 BLACKCREEK



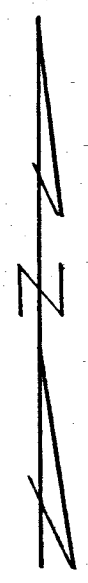
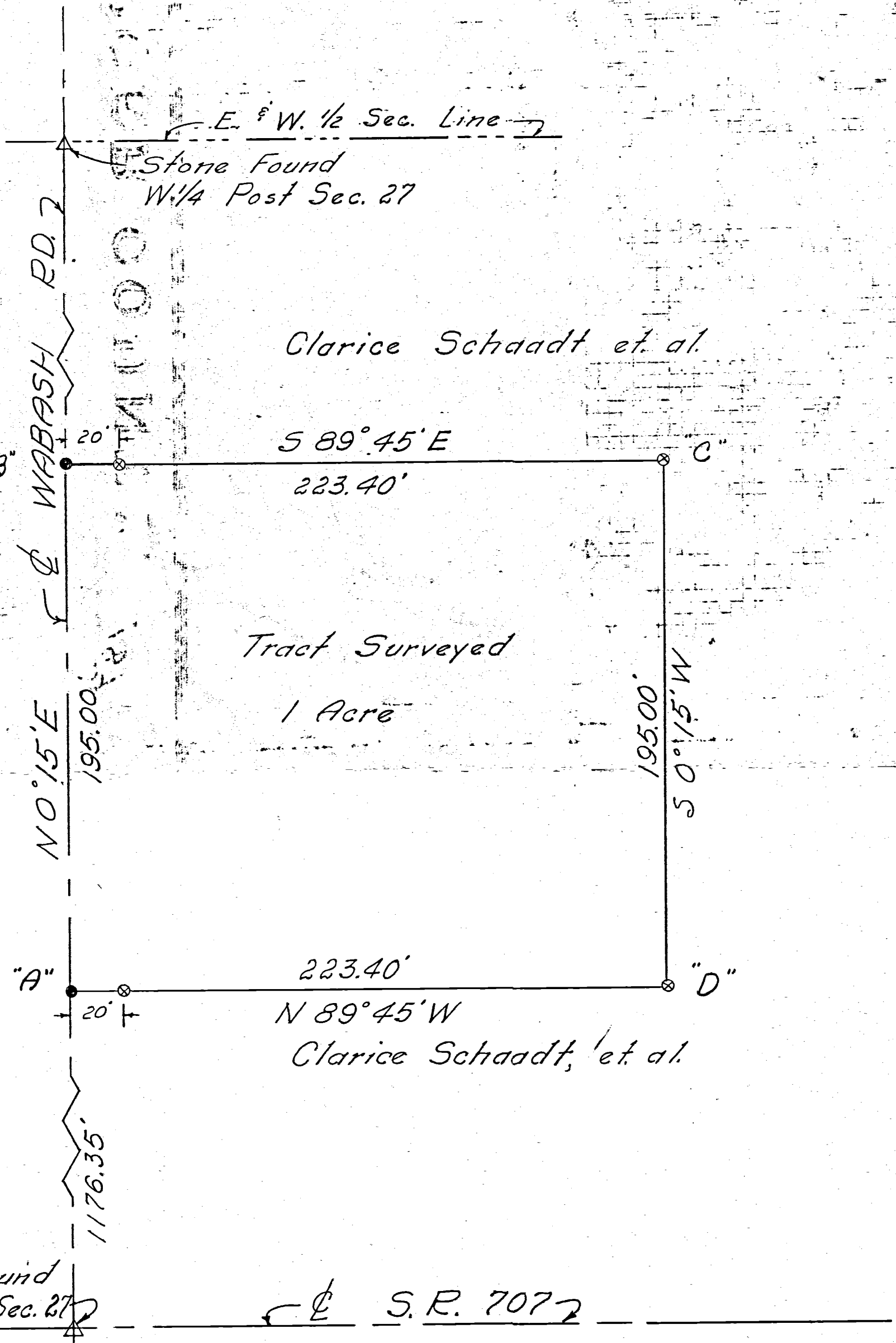
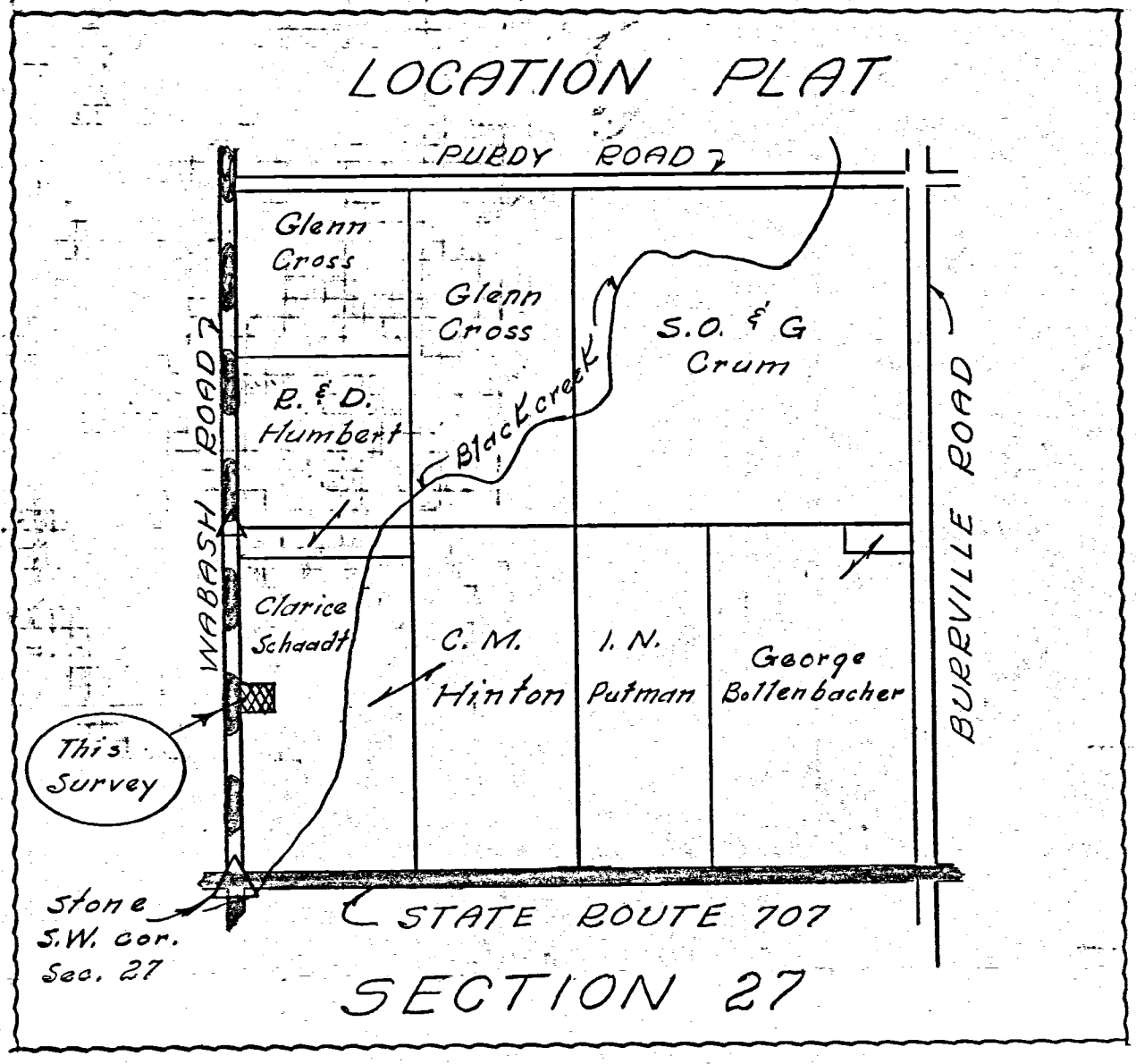
PLAT BY SURVEY DEC. 1997

Roy F. Thompson, Jr.
ROY F. THOMPSON JR. REG. SUR. # 5379



SE COR. SE 1/4 SEC 27
S. LINE SEC. 27 & SR 707

SCHAADT SURVEY
 PART WEST SIDE W 1/2, SW 1/4
 SECTION 27, T45, R1E, BLACKCREEK
 MERCER CO., OHIO
 OCTOBER 1967



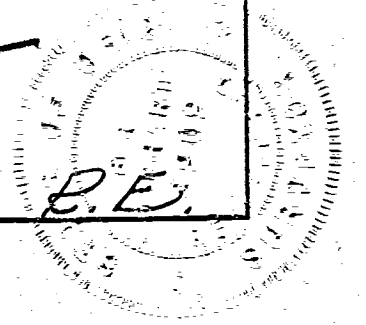
Scale: 1" = 40'

- Legend:
- △ = Section Stones
 - = Iron Pin or spike
 - ⊙ = Patented iron survey stakes.

To all persons interested in the premises contained I hereby certify this survey showing section stones, iron pins & patented iron survey stakes to be correct to the best of my knowledge and belief.

10/27/67

B.R. Nebdant



SURVEY No. In Town 45, of Range 1 East, Plat and Notes of Survey made by me on the
 day of _____, A. D. 1936, in Sec. 27-34 Town 45, of Range 1E, at the instance of
 the Mercer County Commissioners
 Survey made to establish center line of highway

CONDITION OF ORIGINAL CORNERS.

Center Line - Mercer West

Taken over by State Highway
Dept. - 1936 - R/W 60ft.

BK 2

SW 1/4 Sec 27	SE 1/4 Sec 27
---------------	---------------

H	I	S. R. 707	J
SURVEY No.			
day of _____			
NW 1/4 Sec. 34	NE 1/4 Sec. 34		

Note: All bearing stakes $5\frac{1}{8}$ " dia.,
 36" long, driven to within 4" of
 surface of ground. ORIGINAL CORNERS.
 Center Line - Mercer West

CORNERS DESCRIBED	BEARING & DIST.	BEARING & DIST.	BEARING & DIST.	BEARING & DIST.	BEARING & DIST.	BEARING & DIST.	BEARING & DIST.
	Stakes						
H							Described on page 300
I	No Stone						Dug for stone. Hole 5' dia. 4 1/2' deep
J	Stone 12"x12"x16" found (1 1/2' Deep)	NE 34'-11 1/2"	SE 33'-1 1/2"				Driven along E & W fences
							ORIGINAL CORNERS Center Line - Mercer West
							State Highway
							60ft.
							ORIGINAL CORNERS Mercer West
							State Highway
							60ft.
							ORIGINAL CORNERS Mercer West
							State Highway
							60ft.
							ORIGINAL CORNERS Mercer West
							State Highway
							60ft.
							ORIGINAL CORNERS Mercer West
							State Highway
							60ft.
							ORIGINAL CORNERS Mercer West
							State Highway
							60ft.
							ORIGINAL CORNERS Mercer West
							State Highway
							60ft.
							ORIGINAL CORNERS Mercer West
							State Highway
							60ft.
							ORIGINAL CORNERS Mercer West
							State Highway
							60ft.
							ORIGINAL CORNERS Mercer West
							State Highway
							60ft.
							ORIGINAL CORNERS Mercer West
							State Highway
							60ft.
							ORIGINAL CORNERS Mercer West
							State Highway
							60ft.
							ORIGINAL CORNERS Mercer West
							State Highway
							60ft.
							ORIGINAL CORNERS Mercer West
							State Highway
							60ft.
							ORIGINAL CORNERS Mercer West
							State Highway
							60ft.
							ORIGINAL CORNERS Mercer West
							State Highway
							60ft.
							ORIGINAL CORNERS Mercer West
							State Highway
							60ft.
							ORIGINAL CORNERS Mercer West
							State Highway
							60ft.
							ORIGINAL CORNERS Mercer West
							State Highway
							60ft.
							ORIGINAL CORNERS Mercer West
							State Highway
							60ft.
							ORIGINAL CORNERS Mercer West
							State Highway
							60ft.
							ORIGINAL CORNERS Mercer West
							State Highway
							60ft.
							ORIGINAL CORNERS Mercer West
							State Highway
							60ft.
							ORIGINAL CORNERS Mercer West
							State Highway
							60ft.
							ORIGINAL CORNERS Mercer West
							State Highway
							60ft.
							ORIGINAL CORNERS Mercer West
							State Highway
							60ft.
							ORIGINAL CORNERS Mercer West
							State Highway
							60ft.
							ORIGINAL CORNERS Mercer West
							State Highway
							60ft.
							ORIGINAL CORNERS Mercer West
							State Highway
							60ft.
							ORIGINAL CORNERS Mercer West
							State Highway
							60ft.
							ORIGINAL CORNERS Mercer West
							State Highway
							60ft.
							ORIGINAL CORNERS Mercer West
							State Highway
							60ft.
							ORIGINAL CORNERS Mercer West
							State Highway
							60ft.
							ORIGINAL CORNERS Mercer West
							State Highway
							60ft.
							ORIGINAL CORNERS Mercer West
							State Highway
							60ft.
							ORIGINAL CORNERS Mercer West
							State Highway
							60ft.
							ORIGINAL CORNERS Mercer West
							State Highway
							60ft.
							ORIGINAL CORNERS Mercer West
							State Highway
							60ft.
							ORIGINAL CORNERS Mercer West
							State Highway
							60ft.
							ORIGINAL CORNERS Mercer West
							State Highway
							60ft.
							ORIGINAL CORNERS Mercer West
							State Highway
							60ft.
							ORIGINAL CORNERS Mercer West
							State Highway
							60ft.
							ORIGINAL CORNERS Mercer West
							State Highway
							60ft.
							ORIGINAL CORNERS Mercer West
							State Highway
							60ft.
							ORIGINAL CORNERS Mercer West
							State Highway
							60ft.
							ORIGINAL CORNERS Mercer West
							State Highway
							60ft.
							ORIGINAL CORNERS Mercer West
							State Highway
							60ft.
							ORIGINAL CORNERS Mercer West
							State Highway
							60ft.
							ORIGINAL CORNERS Mercer West
							State Highway
							60ft.
							ORIGINAL CORNERS Mercer West
							State Highway
							60ft.
							ORIGINAL CORNERS Mercer West
							State Highway
							60ft.
							ORIGINAL CORNERS Mercer West
							State Highway
							60ft.
							ORIGINAL CORNERS Mercer West
							State Highway
							60ft.
							ORIGINAL CORNERS Mercer West
							State Highway
							60ft.
							ORIGINAL CORNERS Mercer West
							State Highway
							60ft.
							ORIGINAL CORNERS Mercer West
							State Highway
							60ft.
							ORIGINAL CORNERS Mercer West
							State Highway
							60ft.
							ORIGINAL CORNERS Mercer West
							State Highway
							60ft.
							ORIGINAL CORNERS Mercer West
							State Highway
							60ft.
							ORIGINAL CORNERS Mercer West
							State Highway
							60ft.
							ORIGINAL CORNERS Mercer West
							State Highway
							60ft.
							ORIGINAL CORNERS Mercer West
							State Highway
							60ft.
							ORIGINAL CORNERS Mercer West
							State Highway
							60ft.
							ORIGINAL CORNERS Mercer West
							State Highway
							60ft.
							ORIGINAL CORNERS Mercer West
							State Highway
							60ft.
							ORIGINAL CORNERS Mercer West
							State Highway
							60ft.
							ORIGINAL CORNERS Mercer West
							State Highway
							60ft.
							ORIGINAL CORNERS Mercer West
							State Highway
							60ft.
							ORIGINAL CORNERS Mercer West
							State Highway
							60ft.
							ORIGINAL CORNERS Mercer West
							State Highway
							60ft.
							ORIGINAL CORNERS Mercer West
							State Highway

ROAD RECORD

Sec 28 T4S R1E Blackcreek Twp

Plat and notes of survey made by me on the 14 and 15th days of March 1882 at the Court of A. O. Purdy. David Carr, Will Purdy, Jeremiah Shafer, Elias Shusser and Charles Kanon

Chairmen sworn Jeremiah Shafer and Reuben Carr

A S & Stone 15.12.8 in sur of sec 21 1866 Sweet Oak 15 N45 E54 W Ash 6 N75 W30 1/2

B S Stone 12.6.4 W Ash 5 N43 E37 Burr Oak 8 S62 E69 1/2

C Stone W Elm 20 N75 E32 Burr Oak 12 N16 W42 1/2 new Beech 18 S5 W38

D Sand Stone 12.10.8 no trees

E N. E. corner of sec Stone 12.6.5 no trees

F Sand Stone 10.8.4 Beech 20 N76 1/2 E69 1/2 White Oak 18 S57 1/2 E69 1/2

G S & Stone 10.6.6 Cherry 7 N26 1/2 W38 Cherry 14 S26 W60

H Sand Stone 9.6.5 White Oak 9 S57 1/2 W34 W Hickory 18 N32 E42 1/2

I Stake Elm 18 N40 E45 1/2

J Stone in former survey

K W. Post Stake White Oak 10 N66 E13 Beech 12 S74 W39 in sur 1882

L S & Stone 12.8.6 Beech 24 N62 1/2 W5 1/2 B Walnut 5 S72 E40 B Oak 5 N43 W33 D S 8 1/2 W18

M center of sec S & Stone 10.8.4 Sycamore 12 N40 E36 1/2 Sycamore 18 S35 E30 1/2

N new marked Sycamore 22 N52 E53

O Stake & Stone 12.10.6 Red Oak 7 S70 E12 1/3 White Ash 18 N87 1/2 W14 1/2

P Stone 10.6.5 Beech 12 N37 W19 gum W Oak 7 S36 1/2 E58 S 8 1/2 W18 1/2

1 S & Stone 16.12.4 B Ash 3 N1 1/2 W3 Beech 5 S87 1/2 W7 1/2

2 Stake Red Oak 3 S34 W9 Maple 5 N37 1/2 W9

3 Stone no trees

4 Stone no trees

The above I here by certify correct
 Blackcreek March 18 1882

M. Schuyler Surveyor
 of Mercer Co Ohio

The above notes of survey by me were copied by me

from note Book in 24 pages 30 and 31 and are correct to the best of my knowledge and belief

Celina July 20th 1882

Marcus Schuyler Surveyor

(2) Notes of survey made by me in the West E of the S W 1/2 of sec 27 T4S R1E on the 18th day of March 1882 at the Court of Reuben Carr

A S & Stone 10.6.5 in sur of sec 28 Beech 12 N37 W19 gum W Oak 7 S36 1/2 E58 new

B S & Stone 12.6.4 Sweet Oak 10 S12 W32 Sweet Oak 14 S30 1/2 E35

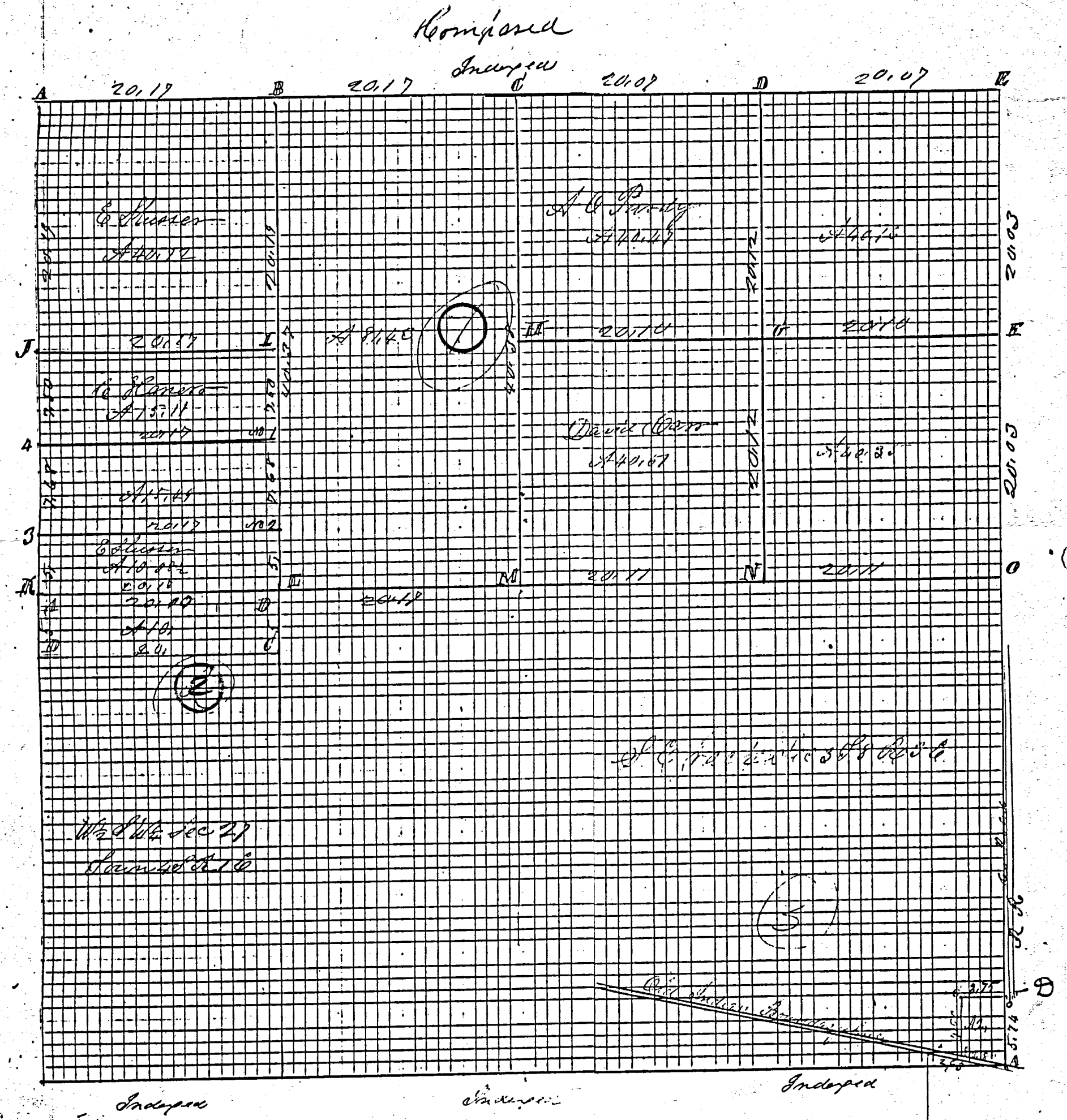
C Stake Elm 24 S11 1/2 E29 1/2 Forked White Maple 8 N34 E6

D Sand Stone 12.10.8 Red Oak 10 N67 1/2 W57 1/2

The above notes of survey are correct to the best of my belief

Blackcreek March 18th 1882 M. Schuyler Surveyor of Mercer Co Ohio

The above notes of survey by me were copied from note Book in 24 pages 34 and are correct to the best of my belief



Survey made by me in the S.E. 1/4 of said Sec. 3 in S.E. corner of Sec. 3 on the 22nd day of August 1882 at the Instance of May Clinch a slave at S.E. corner of Sec B distance 1210.6 being S 78° 06' 26.3 also from N.E. corner of Sec 36 T. 4 S. R. 3 E distance 10.96 being 4.94 chs North of B D line 101 8.6 being 5.74 ch. north of the S.E. corner of Sec 3 S. 8 S. 3 E

Came