

Mercer County, Ohio
5 Year Residential Sales Statistics
Single Family Dwelling, Single Parcel, Armslength

YEAR	January	February	March	April	May	June	First Half Totals
2006	\$3,134,000	\$3,650,000	\$4,031,000	\$4,426,580	\$2,818,300	\$3,537,500	\$21,597,380
2007	\$1,922,182	\$2,621,800	\$3,471,300	\$3,284,400	\$5,021,900	\$3,947,600	\$20,269,182
2008	\$2,078,400	\$2,476,800	\$3,658,900	\$2,787,400	\$3,514,850	\$2,927,400	\$17,443,750
2009	\$1,378,780	\$1,795,800	\$1,579,370	\$3,797,000	\$3,001,450	\$4,471,700	\$16,024,100
2010	\$1,163,300	\$2,759,300	\$3,735,200	\$2,983,000	\$2,173,500	\$2,943,086	\$15,757,386
2011	\$2,290,500	\$1,474,900	\$2,802,300	\$2,053,100	\$2,667,800	\$2,502,100	\$13,790,700
Total	\$11,967,162	\$14,778,600	\$19,278,070	\$19,331,480	\$19,197,800	\$20,329,386	\$104,882,498

First Half of Year

YEAR	July	August	September	October	November	December	Second Half Totals
2006	\$4,681,100	\$6,380,700	\$3,465,700	\$3,260,900	\$3,009,100	\$3,153,300	\$23,950,800
2007	\$3,766,600	\$5,495,800	\$3,425,800	\$2,915,500	\$2,104,300	\$2,548,200	\$20,256,200
2008	\$3,210,150	\$2,775,300	\$3,572,700	\$2,665,500	\$2,321,600	\$1,571,500	\$16,116,750
2009	\$3,430,200	\$2,656,160	\$4,168,634	\$3,785,800	\$2,505,700	\$2,292,100	\$18,838,594
2010	\$1,763,300	\$1,964,900	\$1,749,200	\$1,943,800	\$1,679,800	\$2,706,200	\$11,807,200
Total	\$16,851,350	\$19,272,860	\$16,382,034	\$14,571,500	\$11,620,500	\$12,271,300	\$90,969,544

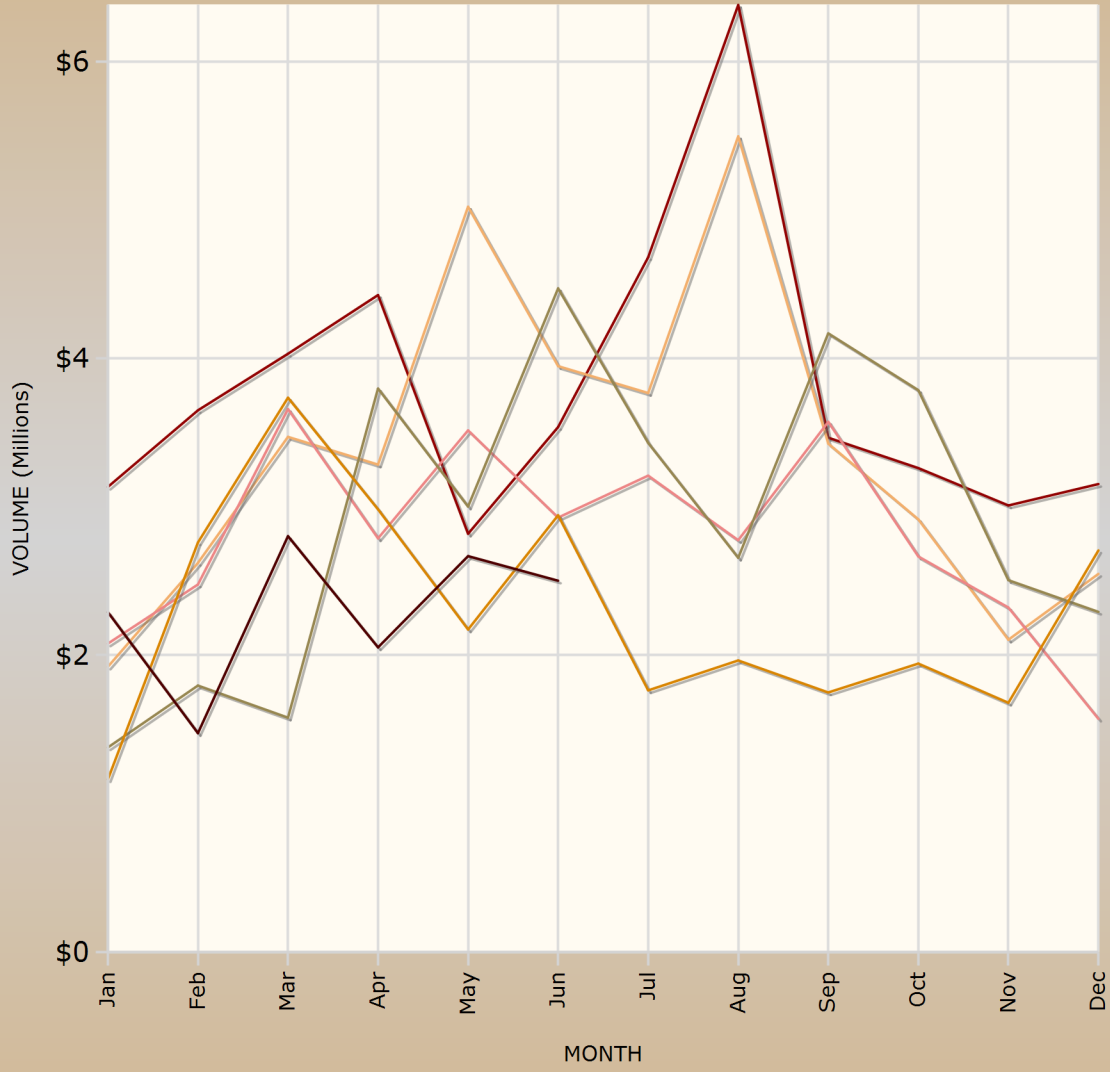
Second Half of Year

YEAR		Minimum	Maximum	Std Dev	Average	Count	Full Year Totals
2006		\$0	\$390,000	\$56,065	\$101,897	447	\$45,548,180
2007		\$0	\$511,000	\$65,094	\$98,842	410	\$40,525,382
2008		\$0	\$425,000	\$56,187	\$95,342	352	\$33,560,500
2009		\$0	\$429,000	\$66,816	\$103,758	336	\$34,862,694
2010		\$0	\$310,000	\$56,221	\$91,882	300	\$27,564,586
2011		\$10,000	\$277,000	\$60,078	\$105,273	131	\$13,790,700
Total		\$0	\$511,000	\$60,334	\$99,115	1,976	\$195,852,042

Full Year

Mercer County, Ohio
5 Year Residential Sales Statistics
Single Family Dwelling, Single Parcel, Armslength

TOTAL MONTHLY SALES VOLUME PER YEAR



— 2006
 — 2007
 — 2008
 — 2009
 — 2010
 — 2011