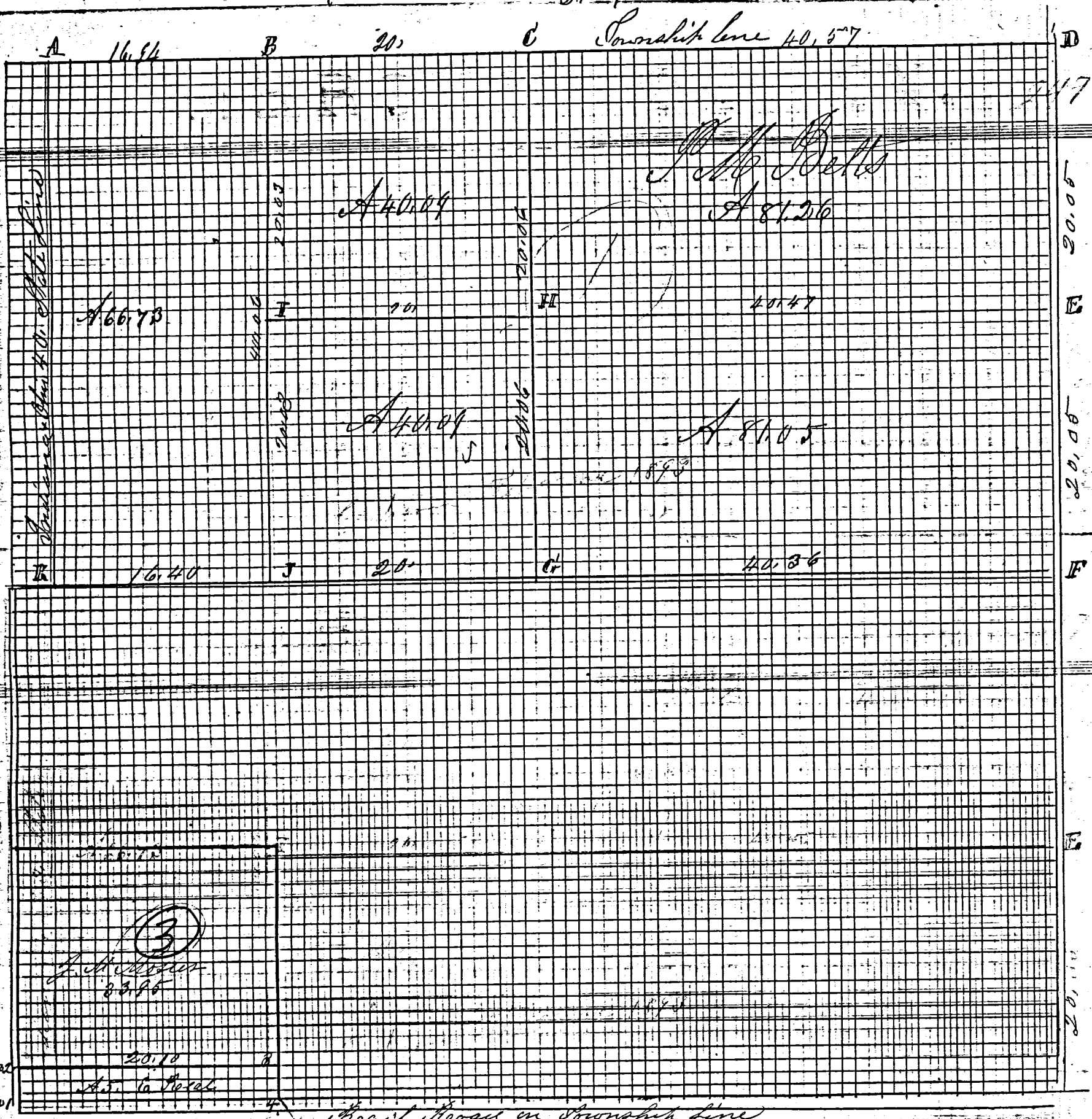


3200

Comparison
 Improved



3

Notes of survey made by me in the S W 1/4 of the S W 1/4 of Sec 32, T 5 S, R 3 E on the 21st day of April 1890 at the inst of John M Mosier and Royal
 Not place of commencing at a stake 50 feet North on the Sec line from the center of R R.
 back 150 ft being 50 chains North of 100 ft on the line of the State Survey of 1837 and
 the center of the 30 ft wide main line's stake at fence 40 ft stake 50 feet south of center of R R.
 The above copied from vol Book 23 Page 48 and is correct to the best
 of my knowledge and belief Aug 30th 1892 Marcus Schuyler Surveyor
 Court

95
06-6

ROAD RECORD

Plat and notes of Survey made by me in the 80's
of Sec 12 T5S. R3E and N.W. 1/4 of said N6E at
the Instance of Daniel Brookhart
N. 1/4 Post

A
B
C
D
E
F

Stake in low ditch cor. W Ash 18 N 36 W 22 W 22 N 12 E 32 1/2 E 33 1/2

Stone 18, 8, 8

Walnut

Stake in ditch

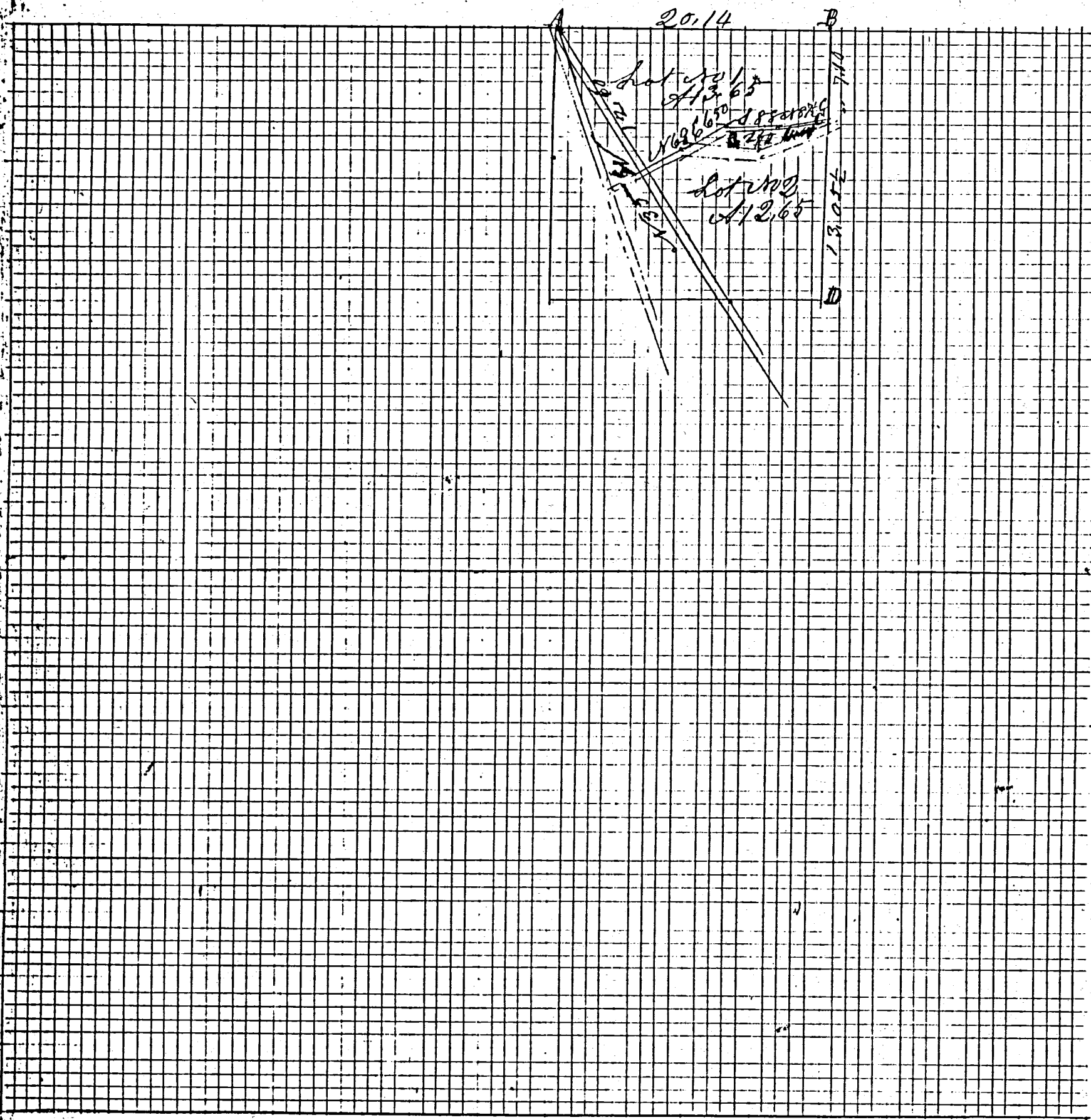
White Oak 18 1/2 N 88 E 33

No DRAWING

Notes of Survey of Township line between Towns
5 and 6 S. Range 3 East on the R R line new trees
marked at S. W corner of Sec 32 T5S. Range 3 East
marked White Oak 44 N 7 1/2 W 314 Also stone corner East 90
being N.W. cor Sec 5 T6S. R3E. 20 chains East of S. W corner
of Sec 32 T5S. R3E Elm 28 1/2 W 100 1/2 Elm 18 1/2 E 105 1/2
At S. 1/4 P of Sec 32 Burr Oak 9 1/2 W 136 Elm 20 1/2 E 121 1/2
20 chains East of S. 1/4 Post of Sec 32 Hickory 20 1/2 W 87 Elm
corner 32 1/2 W Elm 40 N 44 E 153 At Sec 31 T5S. R3E
20 chs West of S E corner Red Oak 12 1/2 E 140 Bk 10 1/2 W 122
At N.E. corner Sec 1 T6S. R3E on W line of Miner's Auglage
White Oak 19 N 30 1/2 E 150 in Auglage as White Oak 18 1/2 W 14 1/2
20 chs W of N.E. cor Sec 1 Stone W Oak 24 1/2 E 112 Buck 12 N 42 E 85 1/2
Stone corner West 12 1/2 links in Sec 36 T5S. Range 3 East
at N. 1/4 Post Sec 1 Stone 25 links East of corner 35 1/2 S. 1/4 Post of 36
Stone. Stone witness & stone 16, 8, 8 N 22 E 100 do 10, 6, 4 S 5 E 100
20 chs West of 1/4 P White Oak South 87 Beech 15 1/2 E 90
At N.W. cor Sec 1 T6S. R3E Stone Beech 10 1/2 E 148 Stone W 10.5.5 N 48 1/2
Stone corner West 29 1/2 at corner Sec 35 1/2 36 At 10 chs West of N.E. cor of Sec 2
Stone. Stake and South 20 continued on next page and pipe Oct 27 1875
At N.W. corner Sec 5 T6S. R3E Burr Oak 24 1/2 W 106 1/2 Stone corner West 71 links old trees given
at 30.36 1/2 chains East of N. 1/4 Post N.W. corner of Sec 5 T6S. R3E Stone
Elm 40 1/2 W 131 Beech 21 1/2 E 184 Mar 1875 M. Schuyler & Son

MERCER COUNTY.

3-25



W. J. ...

ROAD RECORD

Plat and notes of Survey made by me in the N.W. of Sec 12 T5S. R3E and N.W. of said N6E at the Instance of Daniel Brookhart N. Post

A
B
D
C
D
E
F

Stake in low ditch cor. W Ash 18 N 36 W 22 W Ash 12 S 52 E 33 1/2

Stake 18.8.8

Walnut

Stake in ditch

White Oak 6 N 88 E 33

In the Instance of Daniel Brookhart

Notes of Survey of Township line between Towns 5 and 6 S. Range 3 East on the R. R. line new trees marked at S. W. corner of Sec 32 T5S. Range 3 East marked White Oak 44 N 7 1/2 W 214 Also stone corner East 50 being NW cor sec 5 T6S. R3E. 20 chains East of S. W. corner of Sec 32 T5S. 36 Elm 28 S 7 E 100 Elm 18 S 28 E 105 1/2 At S 1/4 P of Sec 32 Burr Oak 9 S 20 1/2 W 136 Elm 20 S 25 E 121 1/2 20 chains East of S 1/2 Post of sec 5 2 Hickory 20 S 7 1/2 W 87 0 m corner 32 S 33 W Elm 40 N 44 E 153 At Sec 31 T5S. R3E 20 chs West of S E corner Red Oak 12 S 17 E 140 B 10 S 24 W 122 At N.E. corner Sec 1 T6S R3E on to line of Miners Auglay's cor White Oak 19 N 30 E 150 in Auglay's White Oak 18 S 30 E 146 20 chs W of N E cor sec 1 Stone W Oak 24 S 20 E 112 Burr 12 S 20 E 85 1/2 Stone corner West 12 1/2 links in sec 36 T5S. Range 3 East at N 1/2 Post Sec 1 Stone 25 links East of corner 35 S 36 S 1/2 Post of 36 Stone. Stone Witness & stone 16.8.8 N 22 E 100 D 10.64 S 55 E 100 20 chs West of 1/4 P White Ash South 87 Beech 15 S 31 E 90 At N. W. cor sec 1 T6S R3E Stone Beech 10 S 25 E 148 Stone W 10.5 S North 89 Stone corner West 29 S at corner sec 35 S 36 At 10 chs West of N. E. cor of sec 2 Stone. Stake and South 70 continued on next page and page Oct 27 1877 At N W corner sec 5 T6S R3E Burr Oak 24 S 14 E 103 At N E corner of sec 5 Beech 24 S 20 E 106 1/2 Stone corner West 71 links of this from At 30.36 1/2 chains East of N. W. corner of sec 5 T6S. R3E Stone Elm 40 S 34 W 131 Beech 21 S 57 1/2 E 184 March 1875 M. Schuyler Survey

Belina Aug 20th 1892 copied from note Book 19 Pages 238. 239 & 240

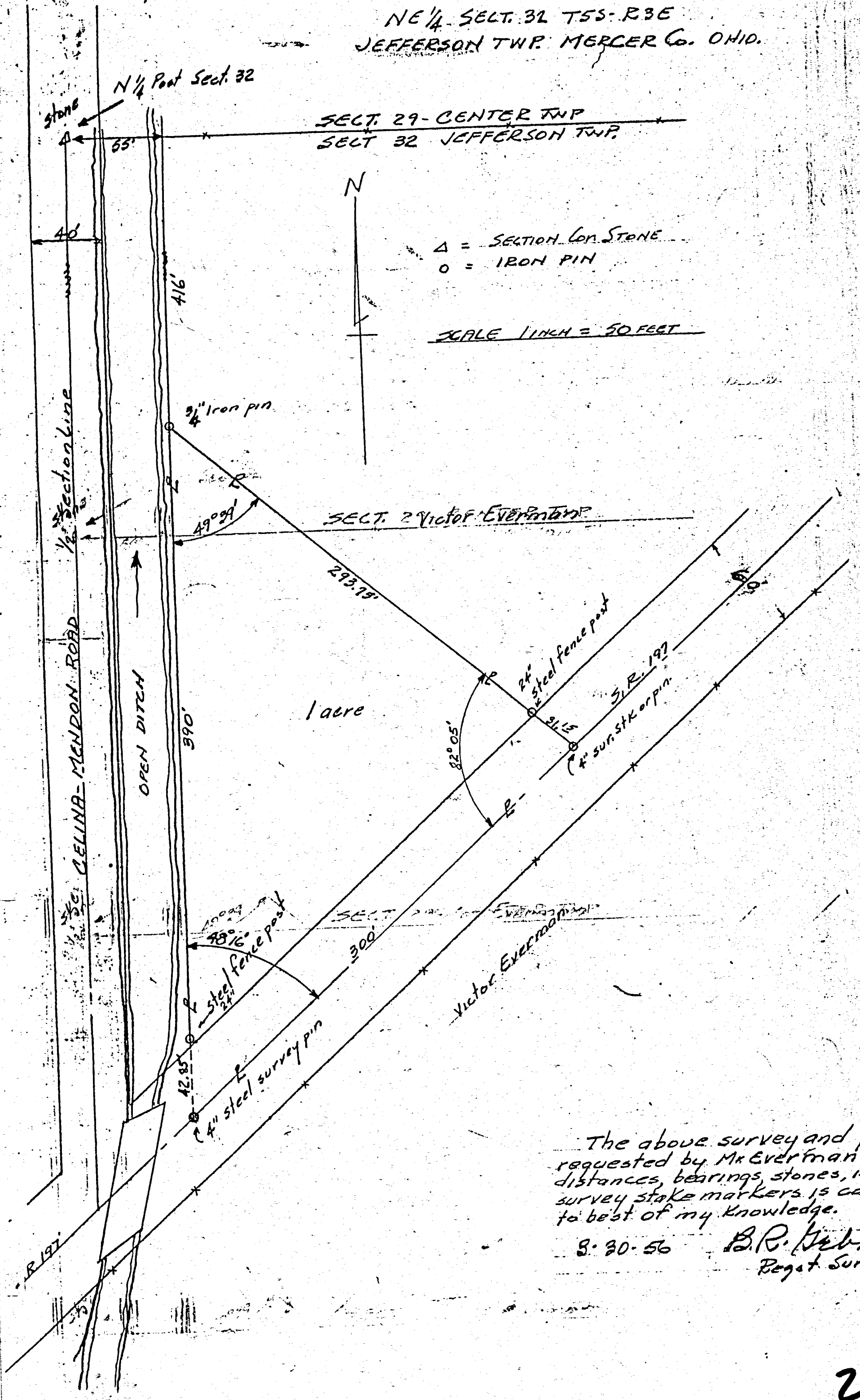
and is correct Marcus Schuyler Surveyor

0632201005

06-32B

SURVEY OUT OF VICTOR EVERMAN FARM

NE 1/4 SECT. 32 T55-R3E
JEFFERSON TWP. MERCER Co. OHIO.



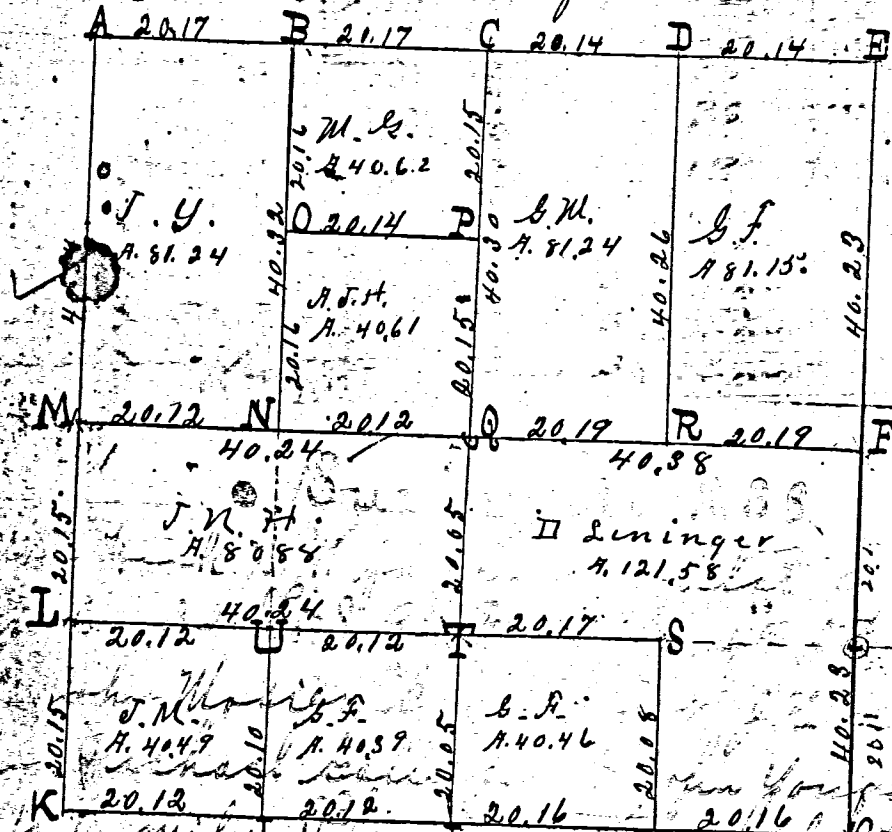
The above survey and plat requested by Mr Everman showing distances, bearings, stones, iron survey stake markers is correct to best of my knowledge.

8-30-56 B.R. Nebhart
Regist. Surv. 3909

Survey No 238

Jefferson 06-6

Copied from Note book No 11 page 5. Plat and Notes of Survey made by me in Sec 32 T5S R3E on the 4th 5th & 7th days of May 1866 in the instance of John Mosier, bro. Mosier, J. N. Hitzler, Geo. Fieldhiser, David Linsinger, Michael Galligher & John Younger & A. J. Hadelen. Scale 4 inches to a mile The top of the plat is north.



Survey Book

1

Copied from Note book No 11 page 5. Plat and Notes of Survey made by me in Sec 32 T5S R3E on the 4th 5th & 7th days of May 1866 in the instance of John Mosier, bro. Mosier, J. N. Hitzler, Geo. Fieldhiser, David Linsinger, Michael Galligher & John Younger & A. J. Hadelen. Scale 4 inches to a mile The top of the plat is north.

- A Stake & Stone 15-4-3 in Survey by me Aug 1859 Beech 16 N 15 E 26 old tree Beech 24 S 55 W 55 1/2 new tree
- B Stake & Stone 24-9-8 Beech 14 S 69 W 17 1/2 Beech 12 S 4 1/2 E 32.
- C 1/2 post, bearing trees standing dead all correct with old notes. Planted stake deep & stone 16-12-8 in Beech 14 S 74 W 30. White Oak 12 N 63 1/4 E 44 1/4
- D Stake and stone 13-7-6 Red Oak 13 S 40 E 22 White Oak 36 N 84 1/2 E 77.
- E I find ash stump high & marked Beech grow all correct with notes
- F Stake & Stone 15-8-2 marked Beech 20 N 9 E 35+
- G 1/2 post, oak grow, marked, stump of ash correct with old notes
- H Stake and stone 15-8-8. Marked Beech 18 N 40 1/2 E 53 3/4.
- I I find the stumps of the old bearing trees correct with old notes Planted stake and stone 12-8-6 Beech 8 S 26 1/2 W 39. Beech 12 N 79 E 37 1/2.
- J Stake and stone 16-8-7 Marked white Hickory 18 S 8 W 88.
- K I find the stumps of both bearing trees correct and planted at corner stake deep & stone 8-8-8 Burr Oak 30 S 30 1/2 E 22 Burr Oak 20 S 54 1/2 W 43 1/2
- L Stake & Stone 16-12-9 Marked 13 Burr Oak 30 S 42 1/2 W 43 1/2
- M Stake & Stone 14-8-8 Beech 28 N 84 1/2 W 44 do 24 S 65 E 80. planted by me in Sec 31 Aug 1859
- N Stake and stone 15-14-8 Marked white Elm 21 S 40 1/2 E 56
- O Stake & Stone 21-4-4 Burr Oak 15 N 18 1/2 E 36 Planted by me in survey Jan 31 Aug 1859
- P Stake & Stone 16-12-10 White Elm 4 N 44 1/2 E 60 Mulberry 6 S 82 1/2 W 41
- Q Stake & Stone 16-8-4 White Oak 26 S 1 E 82 1/2
- R Stake & Stone 10-8-6 Beech 14 S 46 W 35 Beech 18 S 89 W 55.
- S Stake & Stone 16-4-4 triangular W Elm 18 S 1 1/2 W 99 1/2 W Elm 8 N 83 1/2 E 7.
- T Stake & Stone 15-8-7 White Elm 8 N 83 W 15 White Elm 16 S 56 1/2 E 23 1/4.
- U Stake & Stone 12-12-8 White Elm 12 N 3 W 72 White Elm 24 N 69 W 48
- V Stake & Stone 16-8-4 Beech 20 S 52 E 6 1/4 Beech 12 N 72 1/2 W 43

The above plat and notes are correct to the plat at corner of Sec 32 T5S R3E in the instance of John Mosier, bro. Mosier, J. N. Hitzler, Geo. Fieldhiser, David Linsinger, Michael Galligher & John Younger & A. J. Hadelen. Surveyors Office, Jefferson County, Mo. A. J. Hadelen